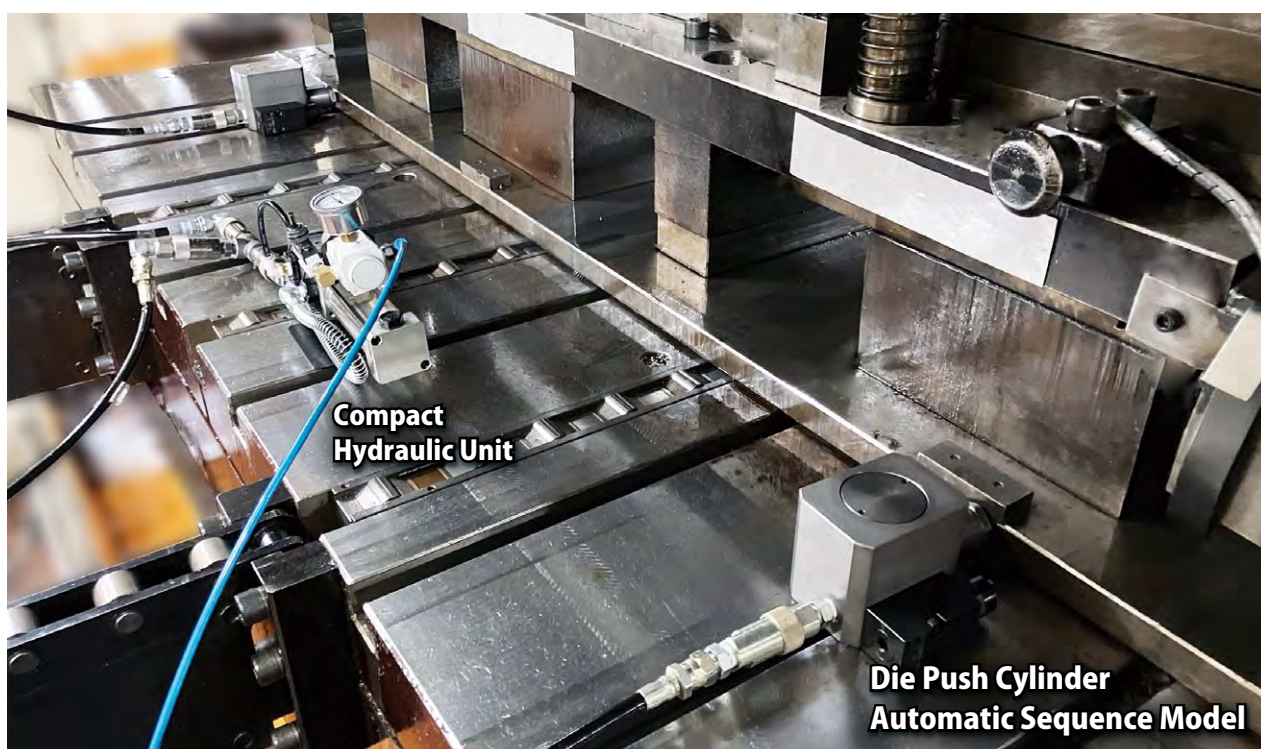


New

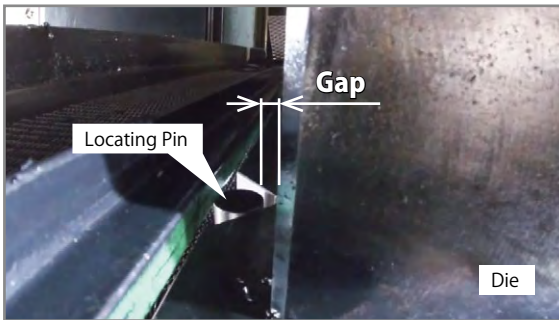
Die Push Cylinder for Press Machine

The final push to the locating pins!



Problem

Locating a heavy die is difficult...



There is a slight gap between V-slot of the die and the locating pin. Though it's so close to the locating pin, the heavy die won't budge...

For example, when loading a 2-ton die,

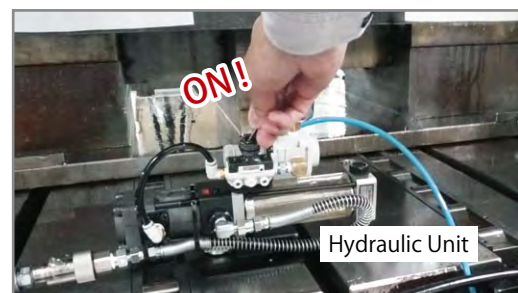
- A slight gap between V-slot of the die and the locating pin is causing a locating issue.
- The die slightly shifts when the die lifter is lowered.

Forcibly moving a heavy die to achieve locating accuracy is hard labor...

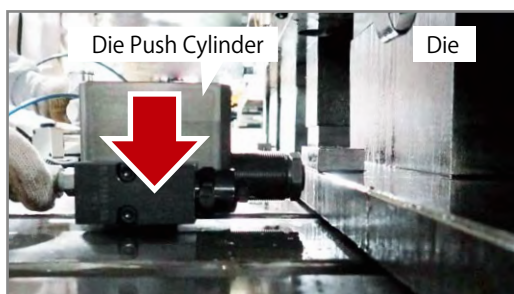
To improve worker retention and address a labor shortage,
Make a safe and worker-friendly workplace!

Solve it with Die Push Cylinder !

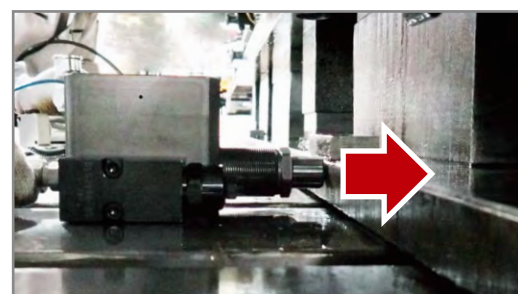
1 Set the cylinder in the T-slot.



2 Turn on the switch to supply Hydraulic Pressure!

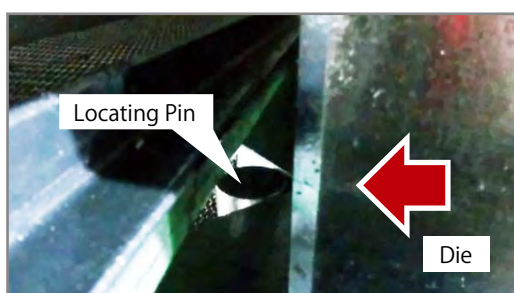


3 The cylinder is fixed in the T-slot!



4 The cylinder pushes the die!

Automatic Sequence Model enables automatic sequence operation of fixing cylinder in T-slot → pushing die in one hydraulic circuit system.



5 Die locating is complete!

**More accurate locating,
Better press quality!**

**Reduce setup time,
Increase productivity!**

System Structure

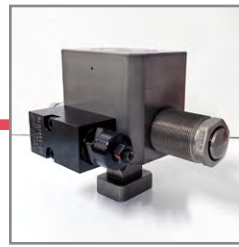
Air
Air Pressure

Hydraulic Unit
(AB7000 Pump)



Hyd. Pressure

Die Push Cylinder



Able to control sequence of
fixing cylinder → pushing die
in one hydraulic circuit system.

Compact Hydraulic Unit
(AA6001 Pump)



【Per Cylinder】

Hydraulic Pressure : at 25MPa

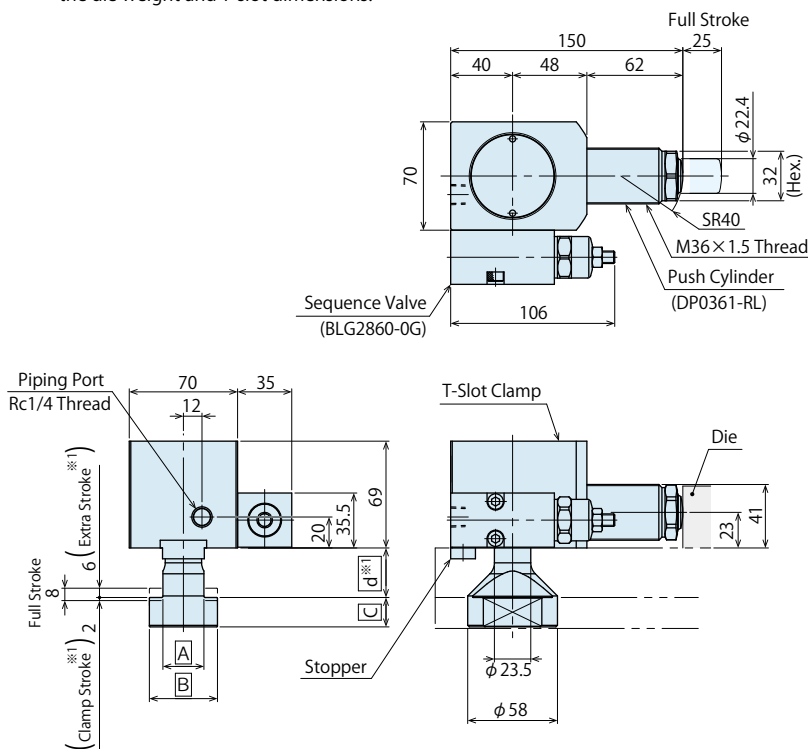
Pushing Force (Cylinder Force) : **9.7kN**

Hydraulic Pressure : at 15MPa

Pushing Force (Cylinder Force) : **5.8kN**

External Dimensions

※ Specifications and external dimensions shown here are for example.
Our specialists will help you find the most suitable system according to
the die weight and T-slot dimensions.



Specification

GY Die Push Cylinder

Max. Operating Pressure	MPa	25
Withstanding Pressure	MPa	37
Operating Temperature	°C	0~70

Push Cylinder

Model No.	DP0361-RL
Max. Cylinder Force (at 25MPa Hyd. Pressure) kN	9.7
Full Stroke mm	25

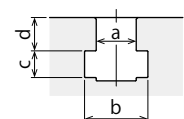
T-Slot Clamp

Max. Clamping Force (at 25MPa Hyd. Pressure)	kN	40
Full Stroke	mm	8
Clamp Stroke ^{※1}	mm	2
Extra Stroke ^{※1}	mm	6
Cylinder Capacity	cm ³	13

※1. Indicates clamp stroke and extra stroke
when d=32.

Dimensions Specified by Customer (T-Slot)

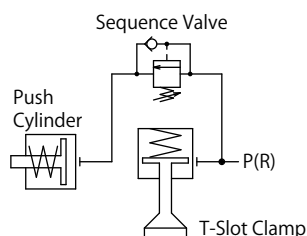
	(mm)
a	28 ^{+0.5} ₀
b	46 ⁺⁴ ₀
c	20 ⁺² ₀
d	28 ~ 32



Manufacturing Dimensions (Designed by KOSMEK)

	(mm)
A	26.5 ± 0.2
B	44 ± 0.3
C	19

Circuit Symbols



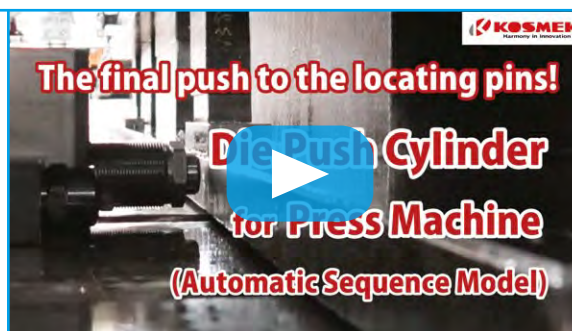
Options

- None** : With Sequence Valve and Stopper (Standard)
- A** : Without Sequence Valve (Clamps and pushes separately)
- B** : Without Stopper
- S1** : Long Stroke (12.5 mm)
- S2** : Long Stroke (20.0 mm)



Application Example Video of
a customer who has installed
Automatic Sequence Model
is available on our website.

https://www.kosmek.co.jp/php_file/video_products.php?id=231&lang=2



Application Example Video of
a customer who has installed
Manual Sequence Model with
Hand Valve is available on our
website.

https://www.kosmek.co.jp/php_file/video_products.php?id=232&lang=2



Application Example Video of
a customer who has installed
Manual Sequence Model with
Stop Valve is available on our
website.

https://www.kosmek.co.jp/php_file/video_products.php?id=233&lang=2



Available for existing press machines. Please feel free to contact us.



KOSMEK LTD.

► <https://www.kosmek.com/>

HEAD OFFICE 1-5, 2-chome, Murotani, Nishi-ku, Kobe-city, Hyogo, Japan 651-2241
TEL.+81-78-991-5162 FAX.+81-78-991-8787

United States of America
SUBSIDIARY

KOSMEK (USA) LTD.
650 Springer Drive, Lombard, IL 60148 USA
TEL. +1-630-620-7650 FAX. +1-630-620-9015

MEXICO
REPRESENTATIVE OFFICE

KOSMEK USA Mexico Office
Av. Loma Pinal de Amoles 320-piso PH oficina 504 interior 13, Vista Dorada, 76060
Santiago de Querétaro, Qro. Mexico TEL. +52-1-55-3044-9983

EUROPE
SUBSIDIARY

KOSMEK EUROPE GmbH
Schleppeplatz 2 9020 Klagenfurt am Wörthersee Austria
TEL. +43-463-287587 FAX. +43-463-287587-20

CHINA
SUBSIDIARY

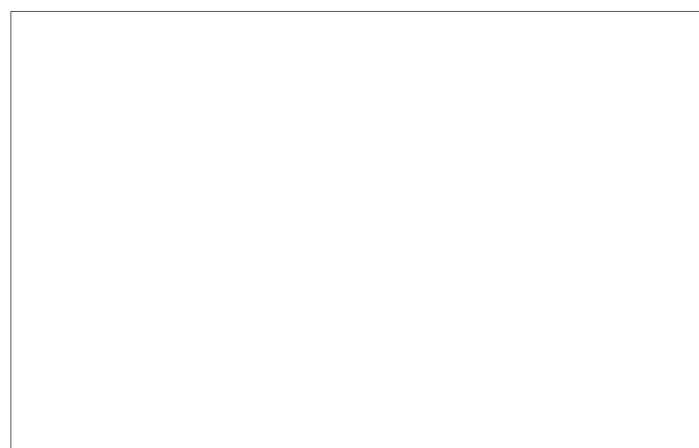
KOSMEK (CHINA) LTD.
Room601, RIVERSIDE PYRAMID No.55, Lane21, Pusan Rd, Pudong
Shanghai 200125, China TEL. +86-21-54253000

INDIA
BRANCH OFFICE

KOSMEK LTD. - INDIA
4A/Old No:649, Ground Floor, 4th D cross, MM Layout, Kavalbyrasandra,
RT Nagar, Bangalore -560032 India TEL. +91-9880561695

THAILAND
REPRESENTATIVE OFFICE

KOSMEK Thailand Representation Office
67 Soi 58, RAMA 9 Rd., Phatthanakan, Suanluang, Bangkok 10250, Thailand
TEL. +66-2-300-5132 FAX. +66-2-300-5133



- For Further Information on Unlisted Specifications and Sizes, Please call us.
- Specifications in this Leaflet are Subject to Change without Notice.

