

# Manifold Block

Model WHZ-MD

Model LZY-MD

Model LZ-MS

Model LZ-MP

Model LZ-C

Model LZ-CQ

Model TMZ-1MB

Model TMZ-2MB

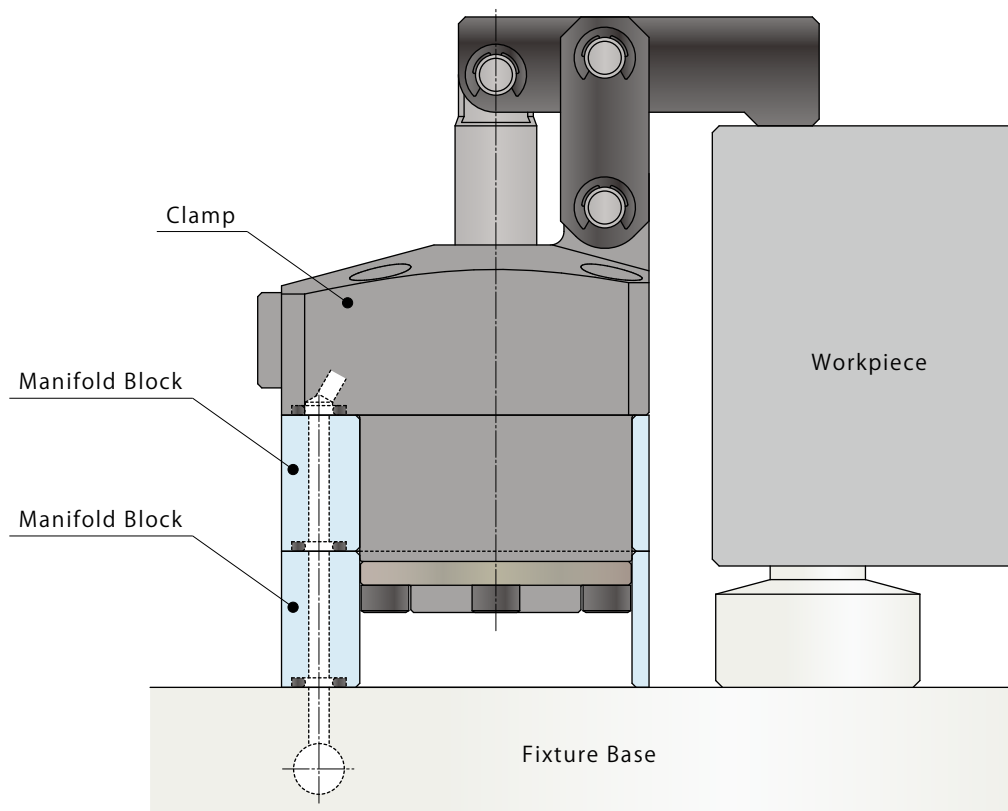
Model DZ-MG

Model DZ-MS



- **Manifold Block**

The mounting height of clamp is adjustable with the manifold block.

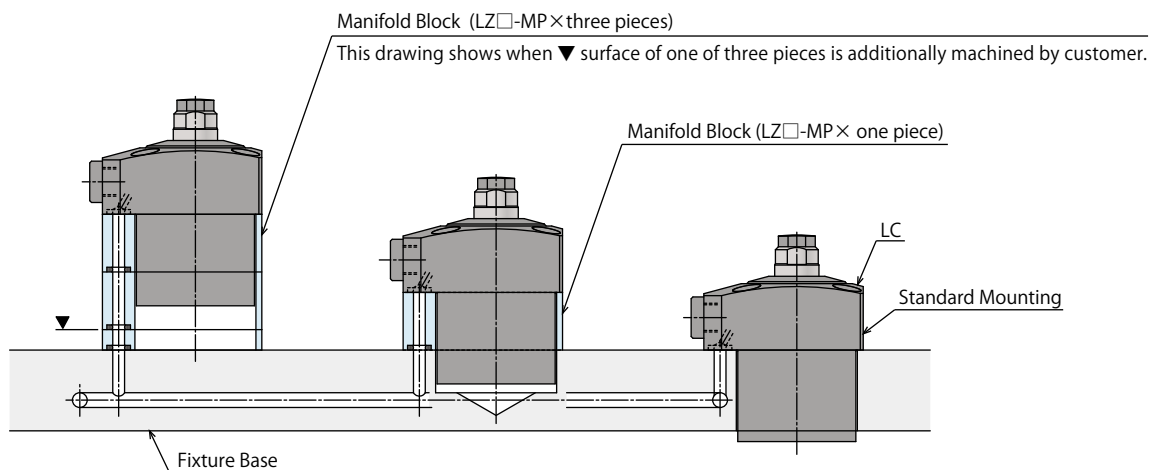


### Applicable Model

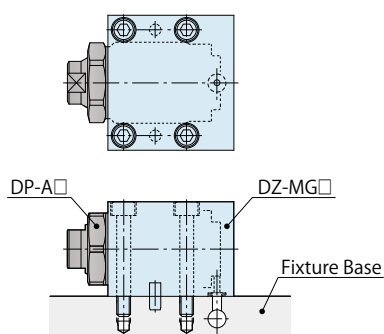
Manifold Block Model No.	Corresponding Item Model No.
Model <b>WHZ-MD</b>	Model <b>WCA</b> Model <b>WHA</b> Model <b>WCE</b> Model <b>WHE</b>
Model <b>LZY-MD</b>	Model <b>LKA</b> Model <b>LKE</b> Model <b>LHA</b> Model <b>LHE</b> Model <b>LL</b> Model <b>LKC</b> Model <b>LKK</b> Model <b>LHC</b> Model <b>LHS</b>
Model <b>LZ-MS</b>	Model <b>LJ</b> Model <b>LG</b> Model <b>LM</b> Model <b>LT</b>
Model <b>LZ-MP</b>	Model <b>LC</b> Model <b>TC</b>
Model <b>LZ-C</b>	Model <b>LD</b>
Model <b>LZ-CQ</b>	Model <b>LD-Q</b>
Model <b>TMZ-1MB</b>	Model <b>TMA-1</b>
Model <b>TMZ-2MB</b>	Model <b>TMA-2</b>
Model <b>DZ-MG□/MS□</b>	Model <b>DP</b>

### Application Examples

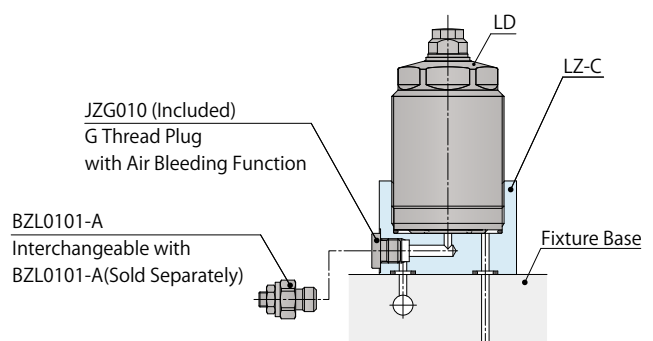
#### ● Work Support (LC) Application Example



#### ● Push Cylinder (DP) Application Example



#### ● Work Support (LD) Application Example



- High-Power Series
- Pneumatic Series
- Hydraulic Series
- Valve / Coupler Hydraulic Unit
- Manual Operation Accessories
- Cautions / Others

- Screw Locator
  - VXF/VXE
- Manual Expansion Locating Pin
  - VX

- Manifold Block
  - WHZ-MD
  - LZY-MD
  - LZ-MS
  - LZ-MP
  - LZ-C
  - LZ-CQ
  - TMZ-1MB
  - TMZ-2MB
  - DZ-M

- Manifold Block / Nut
  - DZ-R
  - DZ-C
  - DZ-P
  - DZ-B
  - LZ-S
  - LZ-SQ
  - WNZ-SQ
  - TNEZ-S
  - TNEZ-SQ

- Pressure Switch
  - JBA

- Pressure Gauge
  - JGA/JGB

- Manifold
  - JX

- Coupler Switch
  - PS

- G-Thread Fitting

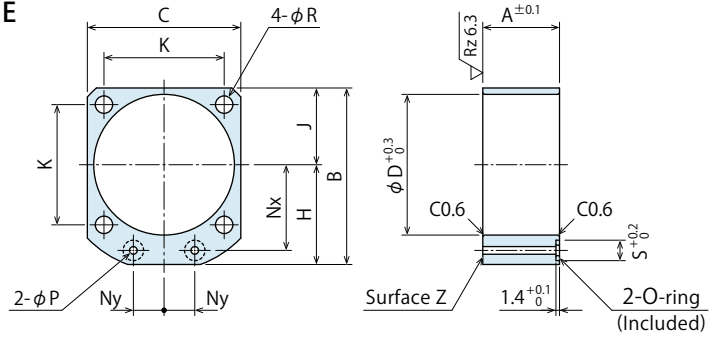
Manifold Block for WCA/WCE/WHA/WHE

Model No. Indication

**WHZ 040 0 - MD**

Size  
(Refer to  
following table)

Design No.  
(Revision Number)



(mm)

Model No.	WHZ0450-MD	WHZ0600-MD	WHZ0320-MD	WHZ0400-MD	WHZ0500-MD	WHZ0630-MD
Corresponding Model No.	WCE0452 WHE0450	WCE0602 WHE0600	WCA0321 WHA0320 WCE1002 WHE1000	WCA0401 WHA0400 WCE1602 WHE1600	WCA0501 WHA0500 WCE2502 WHE2500	WCA0631 WHA0630 WCE4002 WHE4000
A	20	23	25	27	31	35
B	49	54	60	67	77	88.5
C	40	45	50	58	68	81
D	36	40	46	54	64	77
H	29	31.5	35	38	43	48
J	20	22.5	25	29	34	40.5
K	31.4	34	39	45	53	65
Nx	23.5	26	28	31	36	41
Ny	8	9	10	13	15	20
P	3	3	5	5	5	5
R	4.5	5.5	5.5	5.5	6.5	6.5
S	8	8	10	10	10	10
O-ring	OR NBR-90 P5-N			OR NBR-90 P7-N		
Weight kg	0.1	0.1	0.1	0.1	0.2	0.2

- Notes : 1. Material: A2017BE-T4 Surface Finishing: Zircon Finishing (Zirconium Chemical Conversion Treatment)  
 2. Mounting bolts are not provided. Prepare mounting bolts according to the mounting height using the dimension A as a reference.  
 3. For other block thickness (dim. A), machine the surface Z or design a block referring to the drawing and apply surface treatment if necessary.

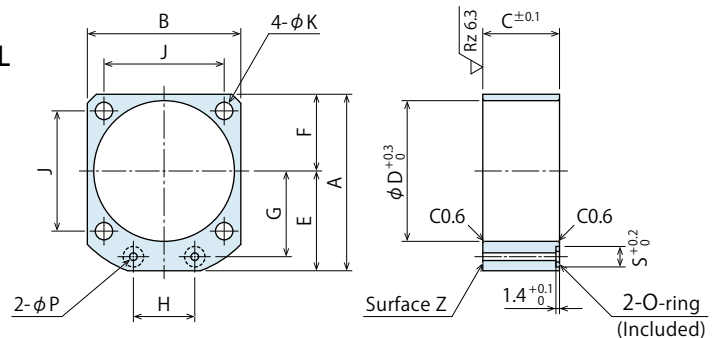
Manifold Block for LKA/LKC/LKE/LKK/LHA/LHC/LHE/LHS/LL

Model No. Indication

**LZY 048 0 - MD**

Size  
(Refer to  
following table)

Design No.  
(Revision Number)



(mm)

Model No.	LZY0360-MD	LZY0400-MD	LZY0480-MD	LZY0550-MD	LZY0650-MD	LZY0750-MD	LZY0900-MD	LZY1050-MD
Corresponding Model No.	LKA0360 LKE0360 / LKK0360 LHA0360 / LHC0360 LHE0360 / LHS0360 LL0360	LKA0400 / LKC0400 LKE0400 / LKK0400 LHA0400 / LHC0400 LHE0400 / LHS0400 LL0400	LKA0480 / LKC0480 LKE0480 / LKK0480 LHA0480 / LHC0480 LHE0480 / LHS0480 LL0480	LKA0550 / LKC0550 LKE0550 / LKK0550 LHA0550 / LHC0550 LHE0550 / LHS0550 LL0550	LKA0650 / LKC0650 LKE0650 LHA0650 / LHC0650 LHE0650 LL0650	LKA0750 LHA0750 LHS0750 LL0750	LKA0900 LHA0900 LHS0900 LL0900	LKA1050 LHA1050 LHS1050 LL1050
A	49	54	61	69	81	92	107	122
B	40	45	51	60	70	80	95	110
C	20	20	27	30	32	37	45	50
D	36	40	48	55	65	75	90	105
E	29	31.5	35.5	39	46	52	59.5	67
F	20	22.5	25.5	30	35	40	47.5	55
G	23.5	26	30	33.5	39.5	45	52.5	60
H	16	18	22	24	30	32	37	45
J	31.4	34	40	47	55	63	75	88
K	4.5	5.5	5.5	6.8	6.8	9	11	14
P	3	3	3	3	5	5	5	5
S	8	8	8	8	10	10	10	10
O-ring	OR NBR-90 P5-N				OR NBR-90 P7-N			
Weight kg	0.2	0.2	0.3	0.4	0.5	0.8	1.2	1.7

- Notes : 1. Material: S45C Surface Finishing: Alkaline Blackening  
 2. Mounting bolts are not provided. Prepare mounting bolts according to the mounting height using the dimension C as a reference.  
 3. For other block thickness (dim. C), machine the surface Z or design a block referring to the drawing and apply surface treatment if necessary.

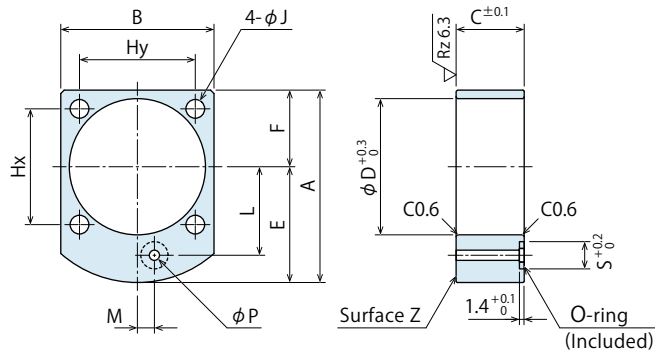
### Manifold Block for LJ/LM/LG/LT

Model No. Indication

**LZ 048 0 - MS**

Size  
(Refer to following table)

Design No.  
(Revision Number)



(mm)

Model No.	LZ0300-MS	LZ0360-MS	LZ0400-MS	LZ0480-MS	LZ0550-MS	LZ0650-MS	LZ0750-MS	LZ0900-MS	LZ1050-MS
Corresponding Model No.	LG0301 / LT0301 LJ0302 / LM0300	LG036□ / LT036□ LJ0362 / LM0360	LG040□ / LT040□ LJ0402 / LM0400	LG048□ / LT048□ LJ0482 / LM0480	LG055□ / LT055□ LJ0552 / LM0550	LG065□ / LT065□ LJ0652 / LM0650	LG075□ / LT075□ LJ0752 / LM0750	LG090□ LJ0902	LG105□ LJ1052
A	48	51.5	56.5	62	70	82	93	107	122
B	34	40	45	51	60	70	80	95	110
C	18	20	20	27	30	32	37	45	50
D	30	36	40	48	55	65	75	90	105
E	28.5	31.5	34	36.5	40	47	53	59.5	67
F	19.5	20	22.5	25.5	30	35	40	47.5	55
Hx	30	31.4	34	40	47	55	63	75	88
Hy	23	31.4	34	40	47	55	63	75	88
J	4.5	4.5	5.5	5.5	6.8	6.8	9	11	14
L	20.5	23.5	26	30	33.5	39.5	45	52.5	60
M	3	5	5	0	0	0	0	0	0
P	3	3	3	3	3	5	5	5	5
S	8	8	8	8	8	10	10	10	10
O-ring	OR NBR-90 P5-N					OR NBR-90 P7-N			
Weight kg	0.1	0.2	0.2	0.3	0.4	0.5	0.8	1.2	1.7

- Notes:
- Material: S45C Surface Finishing: Alkaline Blackening
  - Mounting bolts are not provided. Prepare mounting bolts according to the mounting height using the dimension C as a reference.
  - For other block thickness (dim. C), machine the surface Z or design a block referring to the drawing and apply surface treatment if necessary.

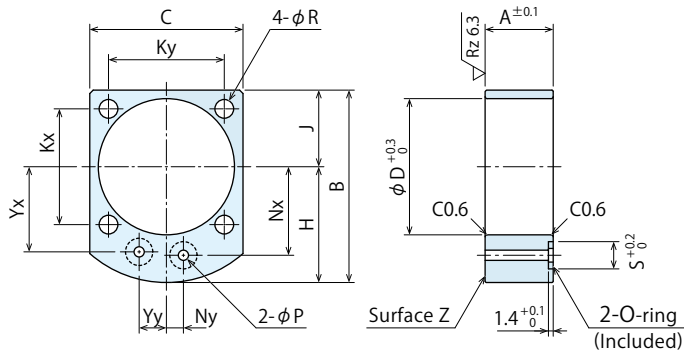
### Manifold Block for LC/TC

Model No. Indication

**LZ 048 0 - MP**

Size  
(Refer to following table)

Design No.  
(Revision Number)



(mm)

Model No.	LZ0260-MP	LZ0300-MP	LZ0360-MP	LZ0400-MP	LZ0480-MP	LZ0550-MP	LZ0650-MP	LZ0750-MP	LZ0900-MP
Corresponding Model No.	LC0263	LC0303	LC0363	LC0403 / TC0403	LC0483 / TC0483	LC0553 / TC0553	LC0653 / TC0653	LC0753 / TC0753	LC0903
A	18	18	20	20	27	30	32	37	45
B	43	48	51.5	56.5	62	70	82	93	107
C	29	34	40	45	51	60	70	80	95
D	26	30	36	40	48	55	65	75	90
H	26.5	28.5	31.5	34	36.5	40	47	53	59.5
J	16.5	19.5	20	22.5	25.5	30	35	40	47.5
Kx	25	30	31.4	34	40	47	55	63	75
Ky	21	23	31.4	34	40	47	55	63	75
Nx	18.5	20.5	23.5	26	30	33.5	39.5	45	52.5
Ny	3	3	5	5	0	0	0	0	0
R	3.4	4.5	4.5	5.5	5.5	6.8	6.8	9	11
Yx	18.5	20.5	23.5	26	28	31	37	42.5	50
Yy	7	7	8	8	11	13	14	15	15
P	3	3	3	3	3	3	5	5	5
S	8	8	8	8	8	8	10	10	10
O-ring	OR NBR-90 P5-N					OR NBR-90 P7-N			
Weight kg	0.1	0.1	0.2	0.2	0.3	0.4	0.5	0.8	1.2

- Notes:
- Material: S45C Surface Finishing: Alkaline Blackening
  - Mounting bolts are not provided. Prepare mounting bolts according to the mounting height using the dimension A as a reference.
  - For other block thickness (dim. A), machine the surface Z or design a block referring to the drawing and apply surface treatment if necessary.
  - Please refer to LZ□-BZS on P.962A when using BZS Direct-Mount Sequence Valve with LC.

- High-Power Series
- Pneumatic Series
- Hydraulic Series
- Valve / Coupler Hydraulic Unit
- Manual Operation Accessories
- Cautions / Others

- Screw Locator
- VXF/VXE
- Manual Expansion Locating Pin
- VX
- Manifold Block
- WHZ-MD
- LZY-MD
- LZ-MS
- LZ-MP
- LZ-C
- LZ-CQ
- TMZ-1MB
- TMZ-2MB
- DZ-M

- Manifold Block / Nut
- DZ-R
- DZ-C
- DZ-P
- DZ-B
- LZ-S
- LZ-SQ
- WNZ-SQ
- TNEZ-S
- TNEZ-SQ

- Pressure Switch
- JBA

- Pressure Gauge
- JGA/JGB

- Manifold
- JX

- Coupler Switch
- PS

- G-Thread Fitting

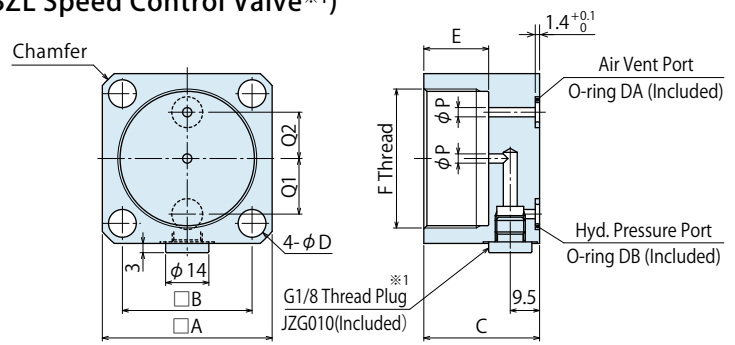
● Manifold Block for LD (Able to Mount BZL Speed Control Valve<sup>※1</sup>)

Model No. Indication

**LZ 036 0 - C**

Size  
(Refer to following table)

Design No.  
(Revision Number)



(mm)

Model No.	LZ0220-C	LZ0260-C	LZ0300-C	LZ0360-C	LZ0450-C
Corresponding Model No.	LD0223 <sup>※2</sup>	LD0263 <sup>※2</sup>	LD0303 <sup>※2</sup>	LD0363 <sup>※2</sup>	LD0453 <sup>※2</sup>
A	28	35	38	45	55
B	21	26	29	35	42
C	30.5	32.5	33.5	34.5	37.5
D	4.5	5.5	5.5	6.8	9
E	14	16	17	18	21
F (Nominal×Pitch)	M22×1.5	M26×1.5	M30×1.5	M36×1.5	M45×1.5
P	2	2.5	3	3	3
Q1	4.5	8	9.5	13	18
Q2	7	9.5	11	13	15
Chamfer	C2	C3	C3	C3	C4
DA	OR NBR-90 P5-N	OR NBR-90 P7-N			
DB	OR NBR-90 P5-N	OR NBR-90 P7-N			
Weight kg	0.12	0.20	0.24	0.34	0.52

- Notes :
1. Material: S45C Surface Finishing: Alkaline Blackening
  2. Mounting bolts are not provided. Prepare mounting bolts according to the mounting height using the dimension C as a reference.
  3. When downloading CAD data from our website to design this product, make sure to check the tolerances and notes shown in the machining dimensions of mounting area for LD Work Support on P. 732L and for BZL Speed Control Valve on P. 951. Failure to do so may result in unstable operation or malfunction.
- ※1. Plunger operating time of LD work support can be adjusted by removing the attached G thread plug (JZG010) and replacing it with the separately ordered speed control valve (BZL0101-A).
- ※2. It is not applicable for LD-Q: Work Support Hydraulic Advance Long Stroke Option. (Please select from LZ-CQ.)

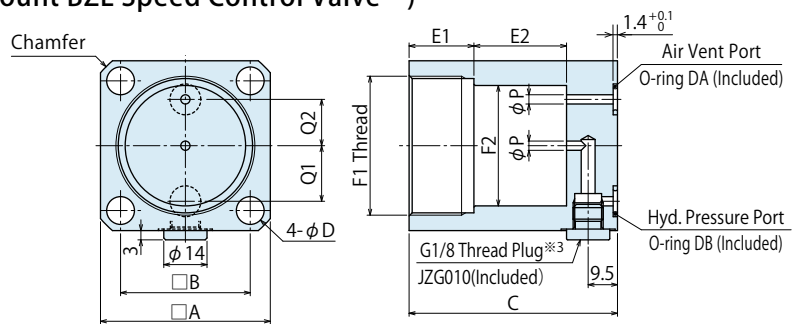
● Manifold Block for LD-Q (Able to Mount BZL Speed Control Valve<sup>※3</sup>)

Model No. Indication

**LZ 036 0 - CQ**

Size  
(Refer to following table)

Design No.  
(Revision Number)



(mm)

Model No.	LZ0220-CQ	LZ0260-CQ	LZ0300-CQ	LZ0360-CQ	LZ0450-CQ
Corresponding Model No.	LD0223-Q <sup>※4</sup>	LD0263-Q <sup>※4</sup>	LD0303-Q <sup>※4</sup>	LD0363-Q <sup>※4</sup>	LD0453-Q <sup>※4</sup>
A	28	35	38	45	55
B	21	26	29	35	42
C	50	49.5	53	60.5	67.5
D	4.5	5.5	5.5	6.8	9
E1	14	16	17	18	21
E2	19.5	17	19.5	26	30
F1 (Nominal×Pitch)	M22×1.5	M26×1.5	M30×1.5	M36×1.5	M45×1.5
F2	16	20	24	30	39
P	2	2.5	3	3	3
Q1	4.5	8	9.5	13	18
Q2	7	9.5	11	13	15
Chamfer	C2	C3	C3	C3	C4
DA	OR NBR-90 P5-N	OR NBR-90 P7-N			
DB	OR NBR-90 P5-N	OR NBR-90 P7-N			
Weight	0.21	0.31	0.38	0.58	0.89

- Notes :
1. Material: S45C Surface Finishing: Alkaline Blackening
  2. Mounting bolts are not provided. Prepare mounting bolts according to the mounting height using the dimension C as a reference.
  3. When downloading CAD data from our website and making this product, make sure to check the tolerances and notes shown in the machining dimensions of mounting area for LD-Q Work Support on P. 733 and for BZL Speed Control Valve on P.951. Failure to do so may result in unstable operation or malfunction.
- ※3. Plunger operating time of LD-Q work support can be adjusted by removing the attached G thread plug (JZG010) and replacing it with the separately ordered speed control valve (BZL0101-A).
- ※4. It is not applicable for LD-EQ: Work Support Spring Advance Long Stroke Option. (Please select from LZ-C.)

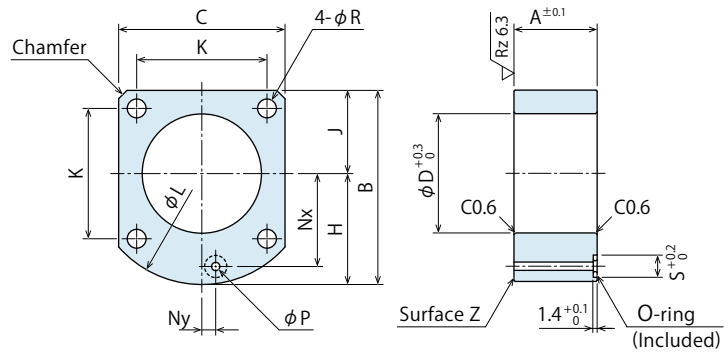
### Manifold Block for TMA-1

Model No. Indication

**TMZ 040 0 - 1MB**

Size  
(Refer to following table)

Design No.  
(Revision Number)



Model No.	TMZ0250-1MB	TMZ0400-1MB	TMZ0600-1MB	TMZ1000-1MB	TMZ1600-1MB	TMZ2500-1MB	TMZ3200-1MB
Corresponding Model No.	TMA0250-1	TMA0400-1	TMA0600-1	TMA1000-1	TMA1600-1	TMA2500-1	TMA3200-1
A	18	21	24	28	35	42	46
B	56.5	62	69	83	95	110	122
C	45	51	60	73	85	100	110
D	33	36	43	48	60	70	85
H	34	36.5	39	46.5	52.5	60	67
J	22.5	25.5	30	36.5	42.5	50	55
K	34	40	47	57	65	75	88
L	68	73	80	97	112	129	147
N <sub>x</sub>	26	30	33.5	40	45	52.5	60
N <sub>y</sub>	5	0	0	0	0	0	0
R	5.5	5.5	6.8	9	11	14	14
P	3	3	3	3	5	5	5
S	8	8	8	8	10	10	10
Chamfer	3	3	( $\phi 80$ )	( $\phi 97$ )	( $\phi 112$ )	( $\phi 129$ )	( $\phi 147$ )
O-ring	OR NBR-90 P5-N	OR NBR-90 P5-N	OR NBR-90 P5-N	OR NBR-90 P5-N	OR NBR-90 P7-N	OR NBR-90 P7-N	OR NBR-90 P7-N
Weight kg	0.2	0.3	0.5	0.9	1.4	2.2	2.6

- Notes : 1. Material : S45C Surface Finishing : Alkaline Blackening  
 2. Mounting bolts are not provided. Prepare mounting bolts according to the mounting height using the dimension A as a reference.  
 3. For other block thickness (dim. A), machine the surface Z or design a block referring to the drawing and apply surface treatment if necessary.

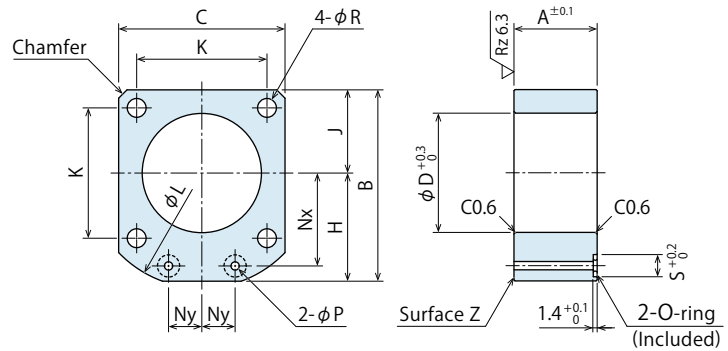
### Manifold Block for TMA-2

Model No. Indication

**TMZ 040 0 - 2MB**

Size  
(Refer to following table)

Design No.  
(Revision Number)



Model No.	TMZ0250-2MB	TMZ0400-2MB	TMZ0600-2MB	TMZ1000-2MB	TMZ1600-2MB	TMZ2500-2MB	TMZ3200-2MB
Corresponding Model No.	TMA0250-2	TMA0400-2	TMA0600-2	TMA1000-2	TMA1600-2	TMA2500-2	TMA3200-2
A	15	16	18	20	24	28	32
B	54	61	69	82.5	94.5	109.5	122
C	45	51	60	73	85	100	110
D	33	36	43	48	60	70	85
H	31.5	35.5	39	46	52	59.5	67
J	22.5	25.5	30	36.5	42.5	50	55
K	34	40	47	57	65	75	88
L	68	75	83	100	113	133	147
N <sub>x</sub>	26	30	33.5	40	45	52.5	60
N <sub>y</sub>	9	10	12	15	16	18.5	20
R	5.5	5.5	6.8	9	11	14	14
P	3	3	3	3	5	5	5
S	8	8	8	8	10	10	10
Chamfer	3	3	3	4	5	8	( $\phi 147$ )
O-ring	OR NBR-90 P5-N	OR NBR-90 P5-N	OR NBR-90 P5-N	OR NBR-90 P5-N	OR NBR-90 P7-N	OR NBR-90 P7-N	OR NBR-90 P7-N
Weight kg	0.2	0.3	0.4	0.6	0.9	1.5	1.8

- Notes : 1. Material : S45C Surface Finishing : Alkaline Blackening  
 2. Mounting bolts are not provided. Prepare mounting bolts according to the mounting height using the dimension A as a reference.  
 3. For other block thickness (dim. A), machine the surface Z or design a block referring to the drawing and apply surface treatment if necessary.

- High-Power Series
- Pneumatic Series
- Hydraulic Series
- Valve / Coupler Hydraulic Unit
- Manual Operation Accessories
- Cautions / Others

- Screw Locator
- VXF/VXE
- Manual Expansion Locating Pin
- VX

- Manifold Block
- WHZ-MD
- LZY-MD
- LZ-MS
- LZ-MP
- LZ-C
- LZ-CQ
- TMZ-1MB
- TMZ-2MB
- DZ-M

- Manifold Block / Nut
- DZ-R
- DZ-C
- DZ-P
- DZ-B
- LZ-S
- LZ-SQ
- WNZ-SQ
- TNEZ-S
- TNEZ-SQ

- Pressure Switch
- JBA
- Pressure Gauge
- JGA/JGB

- Manifold
- JX
- Coupler Switch
- PS
- G-Thread Fitting

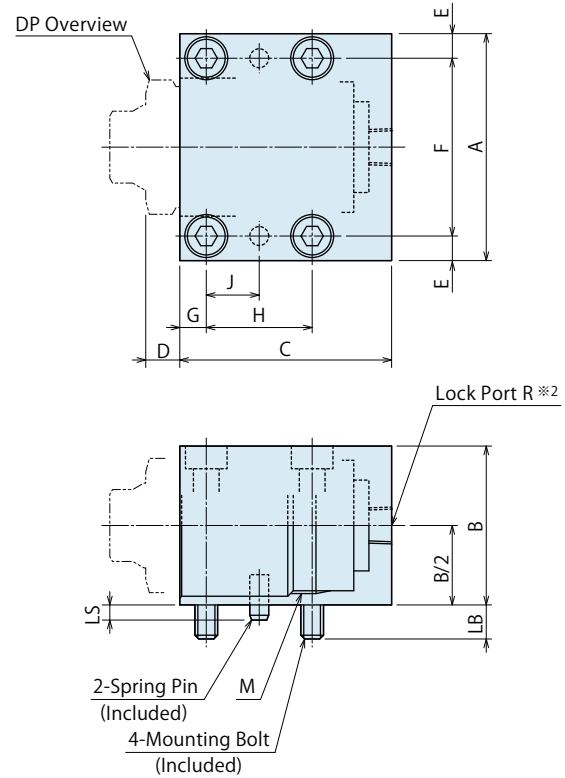
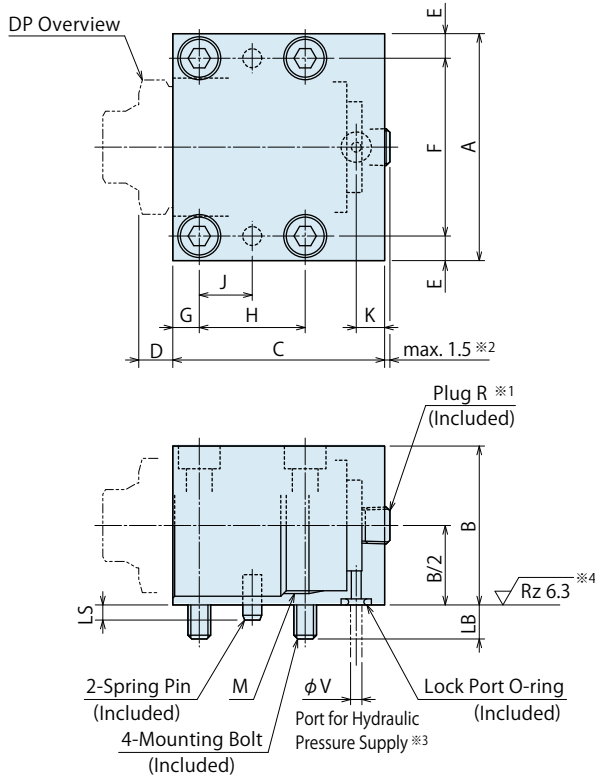
Manifold Block for DP

Model No. Indication



※The drawing below shows DZ□0-MG□ (Gasket option).

※The drawing below shows DZ□0-MS□ (Piping option).



Notes :

- Material : S45C Surface Finishing : Alkaline Blackening
- ※1. G option: the R-thread plug is screwed in at shipment. There is variance in protrusion amount of the plug.
- ※2. Plug is not included in the S option.
- ※3. Recommended hole size for a hydraulic pressure supply port drilled by Customer.  
Make sure there are no burrs around the connection and no cutting chips or other foreign substances inside.
- ※4. The surface touching the O-ring should have a roughness of Rz6.3.

Model No.	DZ0160-MG□		DZ0220-MG□			DZ0240-MG□			DZ0300-MG□			DZ0360-MG□			DZ0450-MG□			DZ0550-MG□			DZ0650-MG□			DZ0800-MG□									
	DZ0160-MS□		DZ0220-MS□			DZ0240-MS□			DZ0300-MS□			DZ0360-MS□			DZ0450-MS□			DZ0550-MS□			DZ0650-MS□			DZ0800-MS□									
Stroke Code	S	M	L	S	M	L	S	M	L	S	M	L	S	M	L	S	M	L	S	M	L	S	M	L	S	M	L	S	M	L			
Corresponding Model No.	DP0160-□		DP0221-□			DP0241-□			DP0301-□			DP0361-□			DP0451-□			DP0551-□			DP0651-□			DP0801-□									
Model No.	S	M	L	S	M	L	S	M	L	S	M	L	S	M	L	S	M	L	S	M	L	S	M	L	S	M	L	S	M	L	S	M	L
A	32		38			45			50			60			75			90			105			120									
B	22		28			32			38			42			52			62			72			88									
C	34	40	49	32.5	38.5	51.5	35	42.5	59	38.5	45.5	65	43	56	77	50	63	85.5	56	69.5	92	65	79	108.5	70	88	119						
D	6		8			8			9			9			13			13			15			15									
E	4.5		4.5			6			6			6.5			8.5			10			11			11									
F	23		29			33			38			47			58			70			83			98									
G	5		5			6			6			7			8			9			11			11									
H	12	18	12	12	18	12	12	18	16	22	18	16	22	18	18	28	20	30	24	36	30	30	42	34	34	52	52						
J	6	9	6	6	9	6	6	9	8	11	9	8	11	9	14	10	15	12	18	15	21	15	17	17	26	26	26						
K	7.5		7.5			7.5			7.5			7.5			11.5			11.5			11.5			11.5									
LB	7		6			8			7			9			11			13			15			15									
LS	3		3			3			4			4			4			4			6			7									
M (Nominal × Pitch)	M16×1.5		M22×1.5			M24×1.5			M30×1.5			M36×1.5			M45×1.5			M55×2			M65×2			M80×2									
R	Rc1/8		Rc1/8			Rc1/8			Rc1/8			Rc1/8			Rc1/4			Rc1/4			Rc1/4			Rc1/4									
Mounting Bolt	M4×0.7×25		M4×0.7×30			M5×0.8×35			M5×0.8×40			M6×45			M8×55			M10×65			M12×75			M12×90									
O-ring	OR NBR-90 P5-N		OR NBR-90 P5-N			OR NBR-90 P5-N			OR NBR-90 P5-N			OR NBR-90 P5-N			OR NBR-90 P7-N			OR NBR-90 P7-N			OR NBR-90 P7-N			OR NBR-90 P7-N									
Spring Pin	φ3×8		φ3×8			φ3×8			φ5×12			φ5×12			φ6×12			φ6×12			φ8×16			φ10×20									
V	3		3			3			5			5			5			5			5			5									
Weight	kg	0.15	0.15	0.2	0.2	0.2	0.3	0.3	0.4	0.5	0.4	0.5	0.6	0.6	0.7	1	1	1.2	1.7	1.5	1.8	2.5	2.2	2.8	3.8	3.2	4	5.5					

 MEMO

- High-Power Series
- Pneumatic Series
- Hydraulic Series
- Valve / Coupler Hydraulic Unit
- Manual Operation Accessories**
- Cautions / Others

Screw Locator

VXF/VXE

Manual Expansion Locating Pin

VX

**Manifold Block**

- WHZ-MD
- LZY-MD
- LZ-MS
- LZ-MP
- LZ-C
- LZ-CQ
- TMZ-1MB
- TMZ-2MB
- DZ-M**

Manifold Block / Nut

- DZ-R
- DZ-C
- DZ-P
- DZ-B
- LZ-S
- LZ-SQ
- WNZ-SQ
- TNEZ-S
- TNEZ-SQ

Pressure Switch

JBA

Pressure Gauge

JGA/JGB

Manifold

JX

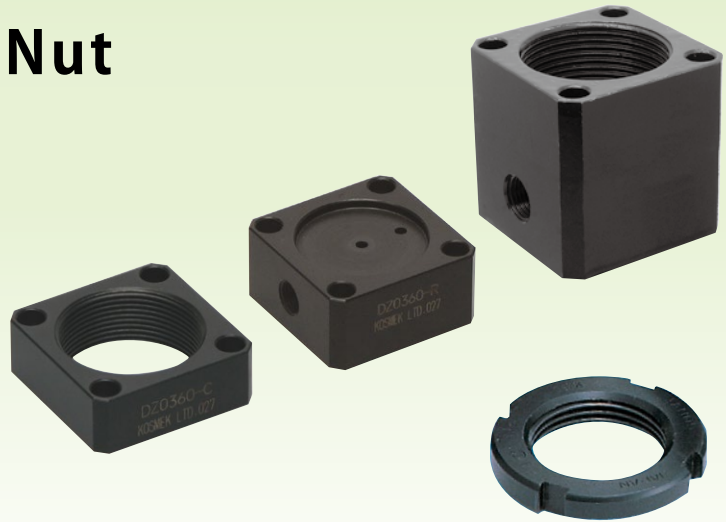
Coupler Switch

PS

G-Thread Fitting

# Manifold Block / Nut

- Model **DZ-R**
- Model **DZ-C**
- Model **DZ-P**
- Model **DZ-B**
- Model **LZ-S**
- Model **LZ-SQ**
- Model **WNZ-SQ**
- Model **TNEZ-S**
- Model **TNEZ-SQ**

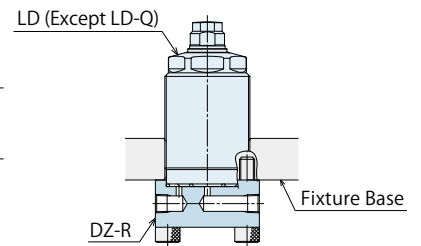
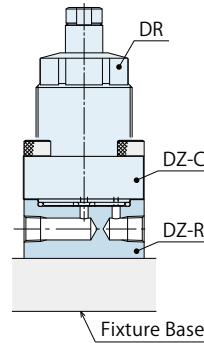


## Applicable Model/Application Examples

### Model **DZ-R**

Manifold Block for  
DR/LD/WNC

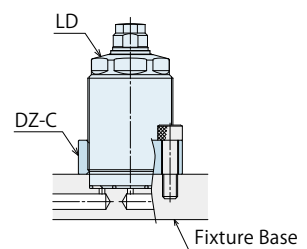
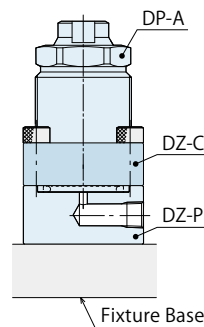
Corresponding Model: DR / LD / WNC



### Model **DZ-C**

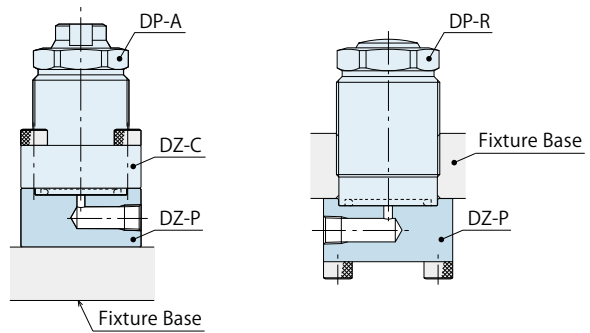
Flanged Nut for  
DP/DR/DS/DT/LD/WNC

Corresponding Model: DP / DR / DS / DT / LD / WNC

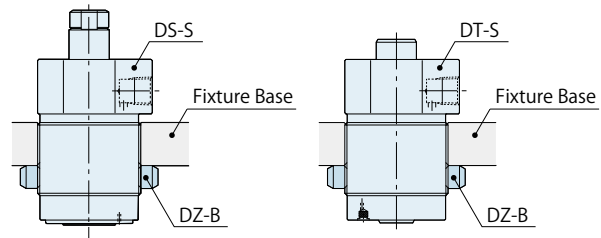


Applicable Model/Application Examples

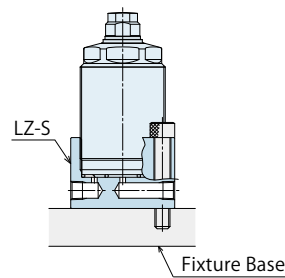
Model **DZ-P**  
**Manifold Block for DP**  
Corresponding Model: DP



Model **DZ-B**  
**Bulkhead Nut for DP/DR/DS/DT**  
Corresponding Model: DP / DR / DS / DT

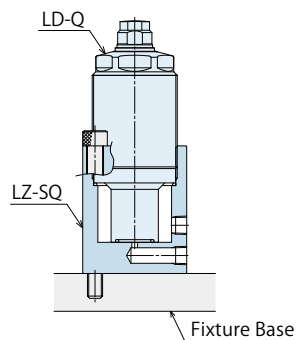


Model **LZ-S**  
**Manifold Block for LD/WNC**  
Corresponding Model: LD / WNC



Model **TNEZ-S**  
**Manifold Block for TNE**  
Corresponding Model: TNE

Model **LZ-SQ**  
**Manifold Block for LD-Q**  
Corresponding Model: LD-Q



Model **WNC-SQ**  
**Manifold Block for WNC-Q**  
Corresponding Model: WNC-Q

Model **TNEZ-SQ**  
**Manifold Block for TNE-Q**  
Corresponding Model: TNE-Q

- High-Power Series
- Pneumatic Series
- Hydraulic Series
- Valve / Coupler Hydraulic Unit
- Manual Operation Accessories
- Cautions / Others

- Screw Locator
  - VXF/VXE
- Manual Expansion Locating Pin
  - VX

- Manifold Block
  - WHZ-MD
  - LZY-MD
  - LZ-MS
  - LZ-MP
  - LZ-C
  - LZ-CQ
  - TMZ-1MB
  - TMZ-2MB
  - DZ-M

- Manifold Block / Nut
  - DZ-R
  - DZ-C
  - DZ-P
  - DZ-B
  - LZ-S
  - LZ-SQ
  - WNC-SQ
  - TNEZ-S
  - TNEZ-SQ

- Pressure Switch
  - JBA

- Pressure Gauge
  - JGA/JGB

- Manifold
  - JX

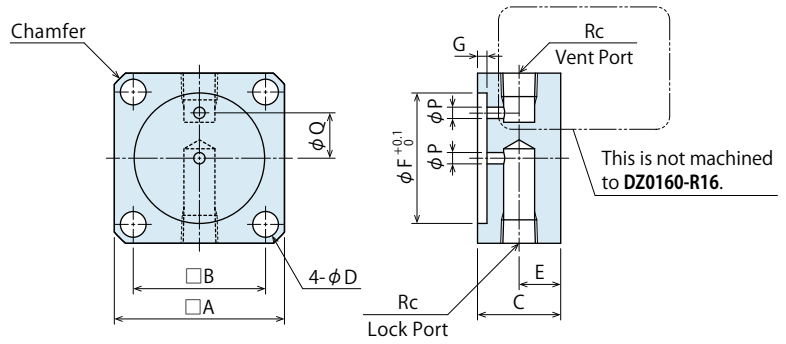
- Coupler Switch
  - PS

- G-Thread Fitting

● Manifold Block for DR/LD/WNC

Model No. Indication

**DZ 036 0 - R**  
 Size (Refer to following table)  
 Design No. (Revision Number)



(mm)

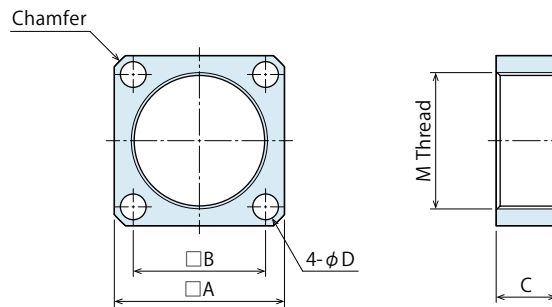
Model No.	DZ0160-R16	DZ0220-R	DZ0240-R	DZ0260-R	DZ0300-R	DZ0360-R	DZ0450-R	DZ0550-R	DZ0600-R	DZ0650-R	DZ0800-R
Corresponding Model No.	- LD0163*1 WNC0103	DR0221 LD0223*1 WNC0353	DR0241 - -	- LD0263*1 WNC0603	DR0301 LD0303*1 WNC1003	DR0361 LD0363*1 WNC1603	DR0451 LD0453*1 WNC3003	DR0551 - -	- - WNC6003	DR0651 - -	DR0801 - -
A	25	28	32	35	38	45	55	70	75	80	90
B	18	21	23	26	29	35	42	54	59	62	72
C	19	19	19	19	22	22	25	25	25	25	28
D	4.5	4.5	5.5	5.5	5.5	6.8	9	11	11	14	14
E	9.5	9.5	9.5	9.5	11	11	12.5	12.5	12.5	12.5	14
F	15	20.5	22.5	24.5	28.5	34.5	43.5	53	58	63	78
G	2.5	2.5	2.5	2.5	2.5	2.5	3.5	3.5	3.5	3.5	4
P	2	2	3	2.5	3	3	5	5	5	5	5
Q	-	7	7.5	9.5	10	12.5	15	19	24	24	30
Rc	Rc1/8	Rc1/8	Rc1/8	Rc1/8	Rc1/8	Rc1/8	Rc1/4	Rc1/4	Rc1/4	Rc1/4	Rc1/4
Chamfer	C2	C2	C3	C3	C3	C3	C4	C5	C4	C5.5	C5.5
Weight kg	0.1	0.1	0.2	0.2	0.2	0.3	0.6	0.8	0.9	1.0	1.5

Notes : 1. Material : S45C Surface Finishing : Alkaline Blackening  
 2. Mounting bolts are not provided. Prepare mounting bolts according to the mounting height using the dimension C as a reference.  
 ※1. It is not applicable for LD-Q: Work Support Hydraulic Advance Long Stroke Option. (Please select from LZ-SQ.)

● Flange Nut for DP/DR/DS/DT/LD/WNC

Model No. Indication

**DZ 036 0 - C**  
 Size (Refer to following table)  
 Design No. (Revision Number)



(mm)

Model No.	DZ0160-C16	DZ0160-C	DZ0220-C	DZ0240-C	DZ0260-C	DZ0300-C	DZ0360-C	DZ0450-C	DZ0550-C	DZ0600-C	DZ0650-C	DZ0800-C	
Corresponding Model No.	- LD0163 WNC0103	DP0160 - - - LD0223 WNC0353	DP0221 DR0221 DS0221 - LD0223 WNC0353	DP0241 DR0241 DS0241 - -	- LD0263 WNC0603	DP0301 DR0301 DS0301 - LD0303 WNC1003	DP0361 DR0361 DS0361 DT0361 LD0363 WNC1603	DP0451 DR0451 DS0451 DT0451 LD0453 WNC3003	DP0551 DR0551 DS0551 DT0551 - -	- - - - - WNC6003	- - - - - -	DP0651 DR0651 DS0651 DT0651 - -	DP0801 DR0801 DS0801 DT0801 - -
A	25	25	28	32	35	38	45	55	70	75	80	90	
B	18	18	21	23	26	29	35	42	54	59	62	72	
C	8	12	14	14	14	15	16	18	20	22	25	25	
D	4.5	4.5	4.5	5.5	5.5	5.5	6.8	9	11	11	14	14	
M (Nominal×Pitch)	M16×1.0	M16×1.5	M22×1.5	M24×1.5	M26×1.5	M30×1.5	M36×1.5	M45×1.5	M55×2	M60×2	M65×2	M80×2	
Chamfer	C2	C2	C2	C3	C3	C3	C3	C4	C5	C4	C5.5	C5.5	
Weight kg	0.03	0.04	0.04	0.06	0.07	0.08	0.1	0.2	0.4	0.45	0.5	0.6	

Notes : 1. Material : S45C Surface Finishing : Alkaline Blackening  
 2. Mounting bolts are not provided. Prepare mounting bolts according to the mounting height using the dimension C as a reference.

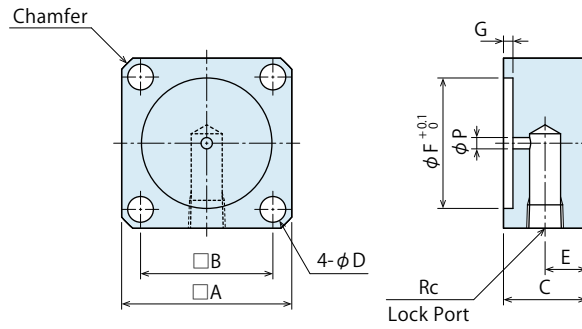
### Manifold Block for DP

Model No. Indication

**DZ 036 0 - P**

Size  
(Refer to following table)

Design No.  
(Revision Number)



(mm)

Model No.	DZ0160-P	DZ0220-P	DZ0240-P	DZ0300-P	DZ0360-P	DZ0450-P	DZ0550-P	DZ0650-P	DZ0800-P
Corresponding Model No.	DP0160	DP0221	DP0241	DP0301	DP0361	DP0451	DP0551	DP0651	DP0801
A	25	28	32	38	45	55	70	80	90
B	18	21	23	29	35	42	54	62	72
C	19	19	19	22	22	25	25	25	28
D	4.5	4.5	5.5	5.5	6.8	9	11	14	14
E	9.5	9.5	9.5	11	11	12.5	12.5	12.5	14
F	14.5	20.5	22.5	28.5	34.5	43.5	53	63	78
G	1.5	2.5	2.5	2.5	2.5	3.5	3.5	3.5	4
P	3	3	3	3	3	5	5	5	5
Rc	Rc1/8	Rc1/8	Rc1/8	Rc1/8	Rc1/8	Rc1/4	Rc1/4	Rc1/4	Rc1/4
Chamfer	C2	C2	C3	C3	C3	C4	C5	C5.5	C5.5
Weight kg	0.1	0.1	0.2	0.2	0.3	0.6	0.8	1.0	1.5

- Notes : 1. Material : S45C Surface Finishing : Alkaline Blackening  
2. Mounting bolts are not provided. Prepare mounting bolts according to the mounting height using the dimension C as a reference.

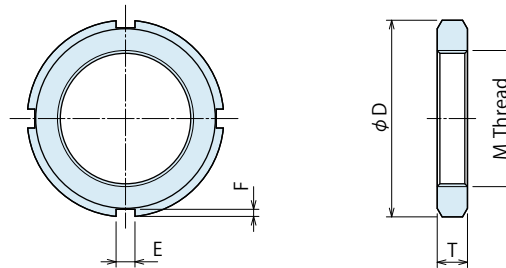
### Bulkhead Nut for DP/DR/DS/DT

Model No. Indication

**DZ 036 0 - B**

Size  
(Refer to following table)

Design No.  
(Revision Number)



(mm)

Model No.	DZ0160-B	DZ0220-B	DZ0240-B	DZ0300-B	DZ0360-B	DZ0450-B	DZ0550-B	DZ0650-B	DZ0800-B
Corresponding Model No.	DP0160	DP0221	DP0241	DP0301	DP0361	DP0451	DP0551	DP0651	DP0801
	-	DR0221	DR0241	DR0301	DR0361	DR0451	DR0551	DR0651	DR0801
	-	DS0221	DS0241	DS0301	DS0361	DS0451	DS0551	DS0651	DS0801
	-	-	-	-	DT0361	DT0451	DT0551	DT0651	DT0801
D	25	32	38	45	52	65	75	85	105
E	4	5	5	5	5	6	7	7	8
F	2	2	2	2	2	2.5	3	3	3.5
M (Nominal×Pitch)	M16×1.5	M22×1.5	M24×1.5	M30×1.5	M36×1.5	M45×1.5	M55×2	M65×2	M80×2
T	5	6	7	7	8	10	11	12	15
Weight kg	0.02	0.03	0.03	0.05	0.08	0.1	0.2	0.3	0.5

- Note : 1. Material : S45C Surface Finishing : Alkaline Blackening

- High-Power Series
- Pneumatic Series
- Hydraulic Series
- Valve / Coupler Hydraulic Unit
- Manual Operation Accessories
- Cautions / Others

- Screw Locator
  - VXF/VXE
- Manual Expansion Locating Pin
  - VX
- Manifold Block
  - WHZ-MD
  - LZY-MD
  - LZ-MS
  - LZ-MP
  - LZ-C
  - LZ-CQ
  - TMZ-1MB
  - TMZ-2MB
  - DZ-M

- Manifold Block / Nut
  - DZ-R
  - DZ-C
  - DZ-P
  - DZ-B
  - LZ-S
  - LZ-SQ
  - WNZ-SQ
  - TNEZ-S
  - TNEZ-SQ

- Pressure Switch
  - JBA
- Pressure Gauge
  - JGA/JGB

- Manifold
  - JX
- Coupler Switch
  - PS
- G-Thread Fitting

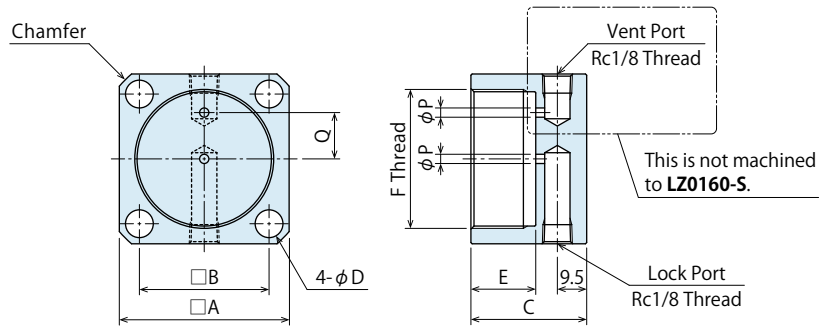
● Manifold Block for LD/WNC

Model No. Indication

**LZ 036 0 - S**

Size  
(Refer to the following table)

Design No.  
(Revision Number)



(mm)

Model No.	LZ0160-S	LZ0220-S	LZ0260-S	LZ0300-S	LZ0360-S	LZ0450-S	LZ0600-S
Corresponding Model No.	LD0163 WNC0103	LD0223*1 WNC0353*2	LD0263*1 WNC0603*2	LD0303*1 WNC1003*2	LD0363*1 WNC1603*2	LD0453*1 WNC3003*2	- WNC6003*2
A	25	28	35	38	45	55	75
B	18	21	26	29	35	42	59
C	26.5	30.5	32.5	33.5	34.5	37.5	41.5
D	4.5	4.5	5.5	5.5	6.8	9	11
E	10	14	16	17	18	21	25
F (Nominal × Pitch)	M16×1.0	M22×1.5	M26×1.5	M30×1.5	M36×1.5	M45×1.5	M60×2
P	2	2	2.5	3	3	3	3
Q	-	7	9.5	11	13	15	24
Chamfer	C2	C2	C3	C3	C3	C4	C4
Weight kg	0.10	0.12	0.20	0.24	0.34	0.52	1.12

- Notes : 1. Material: S45C Surface Finishing: Alkaline Blackening  
 2. Mounting bolts are not provided. Prepare mounting bolts according to the mounting height using the dimension C as a reference.  
 ※1. It is not applicable for LD-Q: Long Stroke Option. (Please select from LZ-SQ.)  
 ※2. It is not applicable for WNC-Q: Long Stroke Option. (Please select from WNZ-SQ.)

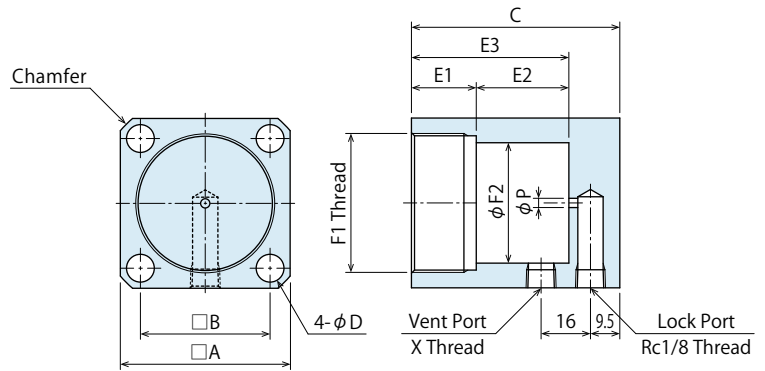
● Manifold Block for LD-Q

Model No. Indication

**LZ 036 0 - SQ**

Size  
(Refer to following table)

Design No.  
(Revision Number)



(mm)

Model No.	LZ0220-SQ	LZ0260-SQ	LZ0300-SQ	LZ0360-SQ	LZ0450-SQ
Corresponding Model No.	LD0223-Q*3	LD0263-Q*3	LD0303-Q*3	LD0363-Q*3	LD0453-Q*3
A	28	35	38	45	55
B	21	26	29	35	42
C	50	49.5	53	60.5	67.5
D	4.5	5.5	5.5	6.8	9
E1	14	16	17	18	21
E2	19.5	17	19.5	26	30
E3	33.5	33	36.5	44	51
F1 (Nominal × Pitch)	M22×1.5	M26×1.5	M30×1.5	M36×1.5	M45×1.5
F2	16	20	24	30	39
P	3	3	3	3	3
X Thread	M5×0.8	Rc1/8	Rc1/8	Rc1/8	Rc1/8
Chamfer	C2	C3	C3	C3	C4
Weight kg	0.21	0.31	0.38	0.58	0.89

- Notes : 1. Material: S45C Surface Finishing: Alkaline Blackening  
 2. Mounting bolts are not provided. Prepare mounting bolts according to the mounting height using the dimension C as a reference.  
 ※3. It is not applicable for LD-EQ: Work Support Spring Advance Long Stroke Option. (Please select from LZ-S.)

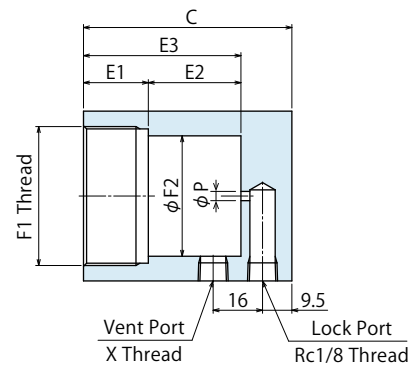
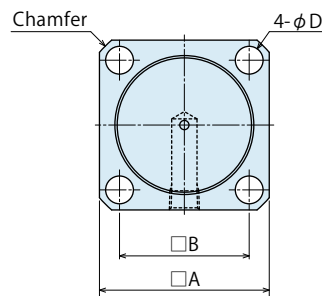
## Manifold Block for WNC-Q

Model No. Indication

**WNZ 035 0 - SQ**

Size  
(Refer to  
following table)

Design No.  
(Revision Number)



(mm)

Model No.	WNZ0350-SQ	WNZ0600-SQ	WNZ1000-SQ	WNZ1600-SQ	WNZ3000-SQ	WNZ6000-SQ
Corresponding Model No.	WNC0353-Q※4	WNC0603-Q※4	WNC1003-Q※4	WNC1603-Q※4	WNC3003-Q※4	WNC6003-Q※4
A	28	35	38	45	55	75
B	21	26	29	35	42	59
C	49	51	52	56	59	68
D	4.5	5.5	5.5	6.8	9	11
E1	14	16	17	18	21	25
E2	18.5	18.5	18.5	21.5	21.5	26.5
E3	32.5	34.5	35.5	39.5	42.5	51.5
F1 (Nominal×Pitch)	M22×1.5	M26×1.5	M30×1.5	M36×1.5	M45×1.5	M60×2
F2	16	20	24	30	39	53
P	3	3	3	3	3	3
X Thread	M5×0.8	Rc1/8	Rc1/8	Rc1/8	Rc1/8	Rc1/8
Chamfer	C2	C3	C3	C3	C4	C4
Weight	kg 0.20	0.32	0.37	0.55	0.79	1.75

Notes : 1. Material : S45C Surface Finishing : Alkaline Blackening

2. Mounting bolts are not provided. Prepare mounting bolts according to the mounting height using the dimension C as a reference.

※4. It is not applicable for WNC-EQ : Work Support Spring Advance Long Stroke Option. (Please select from LZ-S.)

- High-Power Series
- Pneumatic Series
- Hydraulic Series
- Valve / Coupler Hydraulic Unit
- Manual Operation Accessories
- Cautions / Others

Screw Locator

VXF/VXE

Manual Expansion Locating Pin

VX

Manifold Block

WHZ-MD

LZY-MD

LZ-MS

LZ-MP

LZ-C

LZ-CQ

TMZ-1MB

TMZ-2MB

DZ-M

Manifold Block / Nut

DZ-R

DZ-C

DZ-P

DZ-B

LZ-S

LZ-SQ

WNZ-SQ

TNEZ-S

TNEZ-SQ

Pressure Switch

JBA

Pressure Gauge

JGA/JGB

Manifold

JX

Coupler Switch

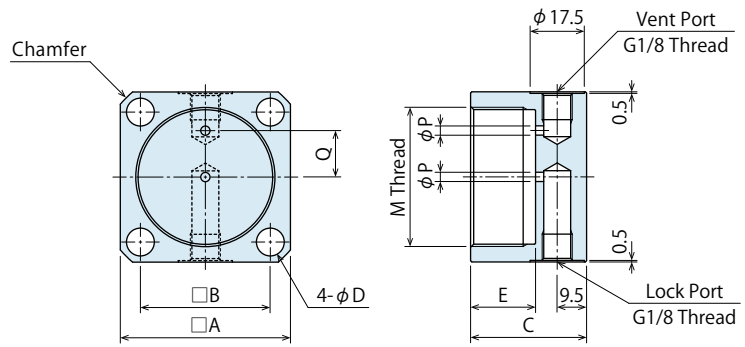
PS

G-Thread Fitting

● Manifold Block for TNE

Model No. Indication

**TNEZ 026 0 - S**  
 Size (Refer to following table)  
 Design No. (Revision Number)



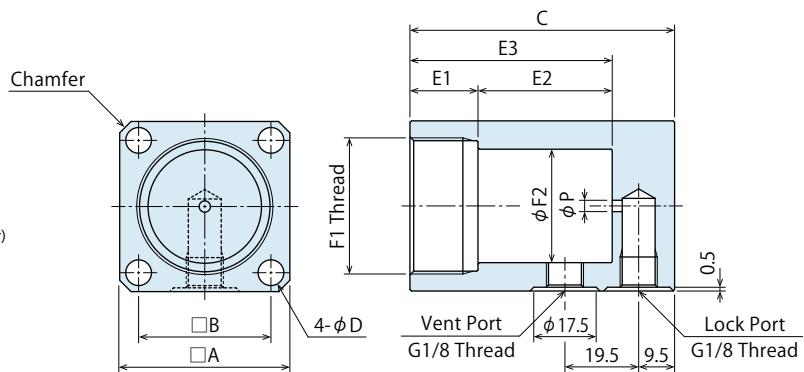
Model No.	TNEZ0260-S	TNEZ0300-S	TNEZ0360-S	TNEZ0450-S
Corresponding Model No.	TNE0260 <sup>※1</sup>	TNE0300 <sup>※1</sup>	TNE0360 <sup>※1</sup>	TNE0450 <sup>※1</sup>
A	35	38	45	55
B	26	29	35	42
C	32.5	33.5	34.5	37.5
D	5.5	5.5	6.8	9
E	16	17	18	21
M (Nominal × Pitch)	M26×1.5	M30×1.5	M36×1.5	M45×1.5
P	2.5	3	3	3
Q	9.5	11	13	15
Chamfer	C3	C3	C3	C4
Weight kg	0.20	0.23	0.34	0.52

Notes : 1. Material: S45C Surface Finishing: Alkaline Blackening  
 2. Mounting bolts are not provided. Prepare mounting bolts according to the mounting height using the dimension C as a reference.  
 ※1. It is not applicable for TNE-Q: Work Support Hydraulic Advance Long Stroke Option. (Please select from TNEZ-SQ.)

● Manifold Block for TNE-Q

Model No. Indication

**TNEZ 026 0 - SQ**  
 Size (Refer to following table)  
 Design No. (Revision Number)



Model No.	TNEZ0260-SQ	TNEZ0300-SQ	TNEZ0360-SQ	TNEZ0450-SQ
Corresponding Model No.	TNE0260-Q <sup>※2</sup>	TNE0300-Q <sup>※2</sup>	TNE0360-Q <sup>※2</sup>	TNE0450-Q <sup>※2</sup>
A	35	38	45	55
B	26	29	35	42
C	56	63.5	70	86.5
D	5.5	5.5	6.8	9
E1	20	21	18	21
E2	19.5	26	35.5	49
E3	39.5	47	53.5	70
F1 (Nominal × Pitch)	M26×1.5	M30×1.5	M36×1.5	M45×1.5
F2	20	24	30	39
P	2.5	3	3	3
Chamfer	C3	C3	C3	C4
Weight kg	0.33	0.43	0.68	1.16

Notes : 1. Material: S45C Surface Finishing: Alkaline Blackening  
 2. Mounting bolts are not provided. Prepare mounting bolts according to the mounting height using the dimension C as a reference.  
 ※2. It is not applicable for TNE-EQ: Work Support Spring Advance Long Stroke Option. (Please select from TNEZ-S.)

**MEMO**

- High-Power Series
- Pneumatic Series
- Hydraulic Series
- Valve / Coupler Hydraulic Unit
- Manual Operation Accessories**
- Cautions / Others

Screw Locator

VXF/VXE

Manual Expansion Locating Pin

VX

Manifold Block

WHZ-MD

LZY-MD

LZ-MS

LZ-MP

LZ-C

LZ-CQ

TMZ-1MB

TMZ-2MB

DZ-M

**Manifold Block / Nut**

DZ-R

DZ-C

DZ-P

DZ-B

LZ-S

LZ-SQ

WNZ-SQ

**TNEZ-S**

**TNEZ-SQ**

Pressure Switch

JBA

Pressure Gauge

JGA/JGB

Manifold

JX

Coupler Switch

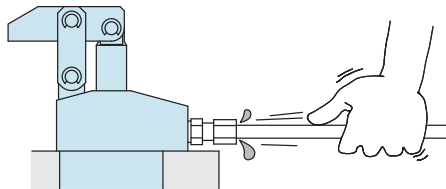
PS

G-Thread Fitting

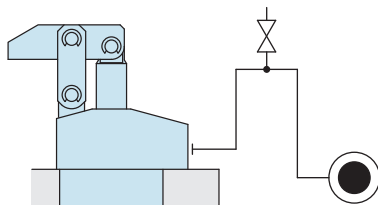
## ● Cautions

### ● Installation Notes (For Hydraulic Series)

- 1) Check the Usable Fluid
  - Please use the appropriate fluid by referring to the Hydraulic Fluid List.
- 2) Procedure before Piping
  - The pipeline, piping connector and fixture circuits should be cleaned by thorough flushing.
  - The dust and cutting chips in the circuit may lead to fluid leakage and malfunction.
  - There is no filter provided with Kosmek's product except for a part of valves which prevents foreign materials and contaminants from getting into the circuit.
- 3) Applying Sealing Tape
  - Wrap with tape 1 to 2 times following the screw direction.
  - Pieces of the sealing tape can lead to oil leakage and malfunction.
  - Please implement piping construction in a clear environment to prevent anything getting in products.
- 4) Air Bleeding of the Hydraulic Circuit
  - If the hydraulic circuit has excessive air, the action time may become very long. If air enters the circuit after connecting the hydraulic port or under the condition of no air in the oil tank, please perform the following steps.
    - ① Reduce hydraulic pressure to less than 2MPa.
    - ② Loosen the cap nut of pipe fitting closest to the clamp by one full turn.
    - ③ Shake the pipeline to loosen the outlet of pipe fitting.  
Hydraulic fluid mixed with air comes out.



- ④ Tighten the cap nut after bleeding.
- ⑤ It is more effective to release air at the highest point inside the circuit or at the end of the circuit.  
(Set an air bleeding valve at the highest point inside the circuit.)



### 5) Checking Looseness and Retightening

- At the beginning of the machine installation, the bolt and nut may be tightened lightly. Check the looseness and re-tighten as required.

### ● Hydraulic Fluid List

Maker	ISO Viscosity Grade ISO-VG-32	
	Anti-Wear Hydraulic Oil	Multi-Purpose Hydraulic Oil
Showa Shell Sekiyu	Tellus S2 M 32	Morlina S2 B 32
Idemitsu Kosan	Daphne Hydraulic Fluid 32	Daphne Super Multi Oil 32
JX Nippon Oil & Energy	Super Hyrando 32	Super Mulpus DX 32
Cosmo Oil	Cosmo Hydro AW32	Cosmo New Mighty Super 32
ExxonMobil	Mobil DTE 24	Mobil DTE 24 Light
Matsumura Oil	Hydol AW-32	
Castrol	Hyspin AWS 32	

Note : Please contact manufacturers when customers require products in the list above.

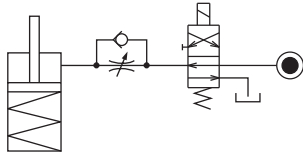
● Notes on Hydraulic Cylinder Speed Control Unit



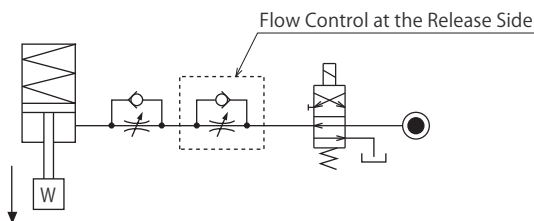
Please pay attention to the cautions below. Design the hydraulic circuit for controlling the action speed of hydraulic cylinder. Improper circuit design may lead to malfunctions and damages. Please review the circuit design in advance.

● Flow Control Circuit for Single Acting Cylinder

For spring return single acting cylinders, restricting flow during release can extremely slow down or disrupt release action. The preferred method is to control the flow during the lock action using a valve that has free-flow in the release direction. It is also preferred to provide a flow control valve at each actuator.



Accelerated clamping speed by excessive hydraulic flow to the cylinder may sustain damage. In this case add flow control to regulate flow. (Please add flow control to release flow if the lever weight is put on at the time of release action when using swing clamps.)



● Flow Control Circuit for Double Acting Cylinder

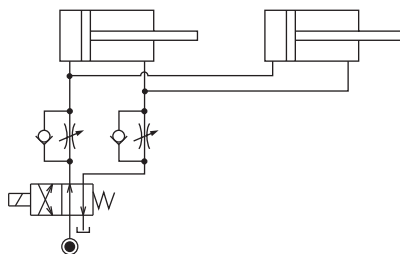
Flow control circuit for double acting cylinder should have meter-out circuits for both the lock and release sides. Meter-in control can have adverse effect by presence of air in the system.

However, in the case of controlling LKE, TMA, TLA, both lock side and release side should be meter-in circuit.

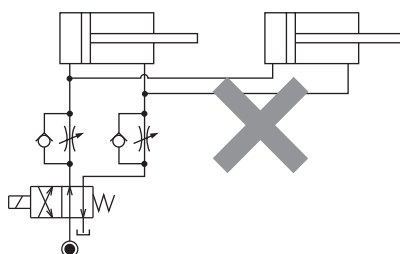
Refer to P.75 for speed adjustment of LKE.

For TMA and TLA, if meter-out circuit is used, abnormal high pressure is created, which causes oil leakage and damage.

【Meter-out Circuit】 (Except LKE/TMA/TLA)

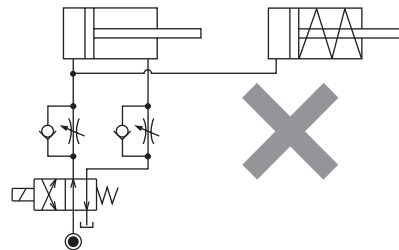


【Meter-in Circuit】 (LKE/TMA/TLA must be controlled with meter-in.)



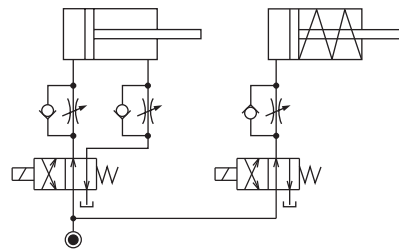
In the case of meter-out circuit, the hydraulic circuit should be designed with the following points.

- ① Single acting components should not be used in the same flow control circuit as the double acting components. The release action of the single acting cylinders may become erratic or very slow.

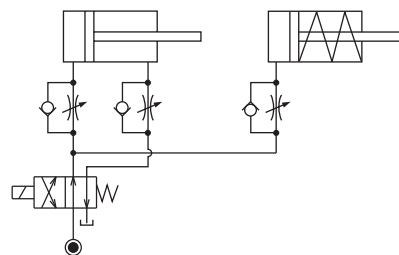


Refer to the following circuit when both the single acting cylinder and double acting cylinder are used together.

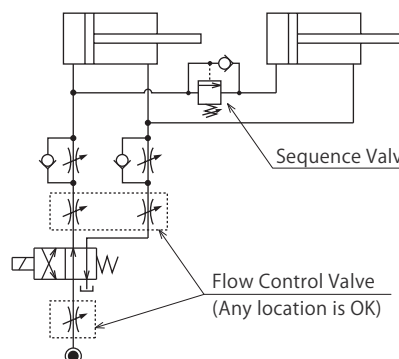
- Separate the control circuit.



- Reduce the influence of double acting cylinder control unit. However, due to the back pressure in tank line, single action cylinder is activated after double action cylinder works.



- ② In the case of meter-out circuit, the inner circuit pressure may increase during the cylinder action because of the fluid supply. The increase of the inner circuit pressure can be prevented by reducing the supplied fluid beforehand via the flow control valve. Especially when using sequence valve or pressure switches for clamping detection. If the back pressure is more than the set pressure then the system will not work as it is designed to.



- High-Power Series
- Pneumatic Series
- Hydraulic Series
- Valve / Coupler Hydraulic Unit
- Manual Operation Accessories
- Cautions / Others

Cautions

- Installation Notes (For Hydraulic Series)
- Hydraulic Fluid List
- Notes on Hydraulic Cylinder Speed Control Circuit
- Notes on Handling
- Maintenance/Inspection
- Warranty

Company Profile

- Company Profile
- Our Products
- History

Index

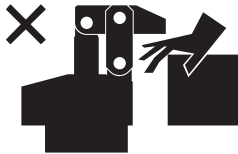
- Search by
- Alphabetical Order

Sales Offices

## ⓘ Cautions

### ● Notes on Handling

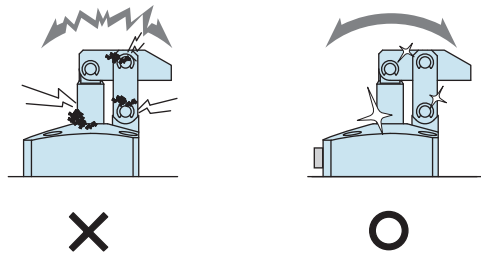
- 1) It should be operated by qualified personnel.
  - The hydraulic machine and air compressor should be operated and maintained by qualified personnel.
- 2) Do not operate or remove the product unless the safety protocols are ensured.
  - ① The machine and equipment can only be inspected or prepared when it is confirmed that the safety devices are in place.
  - ② Before the product is removed, make sure that the above-mentioned safety devices are in place. Shut off the pressure and power source, and make sure no pressure exists in the air and hydraulic circuits.
  - ③ After stopping the product, do not remove until the temperature drops.
  - ④ Make sure there is no abnormality in the bolts and respective parts before restarting the machine or equipment.
- 3) Do not touch a clamp (cylinder) while it is working. Otherwise, your hands may be injured due to clinching.



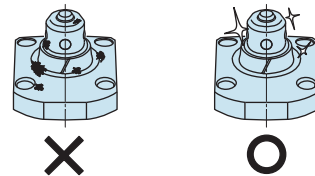
- 4) Do not disassemble or modify.
  - If the equipment is taken apart or modified, the warranty will be voided even within the warranty period.

### ● Maintenance and Inspection

- 1) Removal of the Machine and Shut-off of Pressure Source
  - Before the machine is removed, make sure that safety devices and preventive devices are in place. Shut off the pressure and power source, and make sure no pressure exists in the air and hydraulic circuits.
  - Make sure there is no abnormality in the bolts and respective parts before restarting.
- 2) Regularly clean the area around the piston rod and plunger.
  - If it is used when the surface is contaminated with dirt, it may lead to packing seal damage, malfunctioning and fluid leakage.



- 3) Please clean out the reference surfaces on a regular basis (taper reference surface and seating surface) of the locating products. (VS/VT/VFL/VFM/VFJ/VFK/WVS/VWM/VWK/VX/VXE/VXF)
  - The locating products, except VX/VXE/VXF model, can remove contaminants with cleaning functions. However, hardened cutting chips, adhesive coolant and others may not be removed. Make sure there are no contaminants before installing a workpiece/pallet.
  - Continuous use with contaminant on components will lead to locating accuracy failure, malfunction and fluid leakage.



- 4) If disconnecting by couplers, air bleeding should be carried out on a regular basis to avoid air mixed in the circuit.
- 5) Regularly tighten nut, bolt, pin, cylinder, pipe line and others to ensure proper use.
- 6) Make sure the hydraulic fluid has not deteriorated.
- 7) Make sure there is a smooth action without an irregular noise.
  - Especially when it is restarted after left unused for a long period, make sure it can be operated correctly.
- 8) The products should be stored in the cool and dark place without direct sunshine or moisture.
- 9) Please contact us for overhaul and repair.

## ● Warranty

### 1) Warranty Period

- The product warranty period is 18 months from shipment from our factory or 12 months from initial use, whichever is earlier.

### 2) Warranty Scope

- If the product is damaged or malfunctions during the warranty period due to faulty design, materials or workmanship, we will replace or repair the defective part at our expense.

Defects or failures caused by the following are not covered.

- ① If the stipulated maintenance and inspection are not carried out.
- ② If the product is used while it is not suitable for use based on the operator's judgment, resulting in defect.
- ③ If it is used or operated in an inappropriate way by the operator. (Including damage caused by the misconduct of the third party.)
- ④ If the defect is caused by reasons other than our responsibility.
- ⑤ If repair or modifications are carried out by anyone other than Kosmek, or without our approval and confirmation, it will void warranty.
- ⑥ Other caused by natural disasters or calamities not attributable to our company.
- ⑦ Parts or replacement expenses due to parts consumption and deterioration. (Such as rubber, plastic, seal material and some electric components.)

Damages excluding from direct result of a product defect shall be excluded from the warranty.

High-Power  
Series

Pneumatic Series

Hydraulic Series

Valve / Coupler  
Hydraulic Unit

Manual Operation  
Accessories

Cautions / Others

#### Cautions

Installation Notes  
(For Hydraulic Series)

Hydraulic Fluid List

Notes on Hydraulic Cylinder  
Speed Control Circuit

Notes on Handling

Maintenance/  
Inspection

Warranty

Company Profile

Company Profile

Our Products

History

Index

Search by  
Alphabetical Order

Sales Offices

# Sales Offices

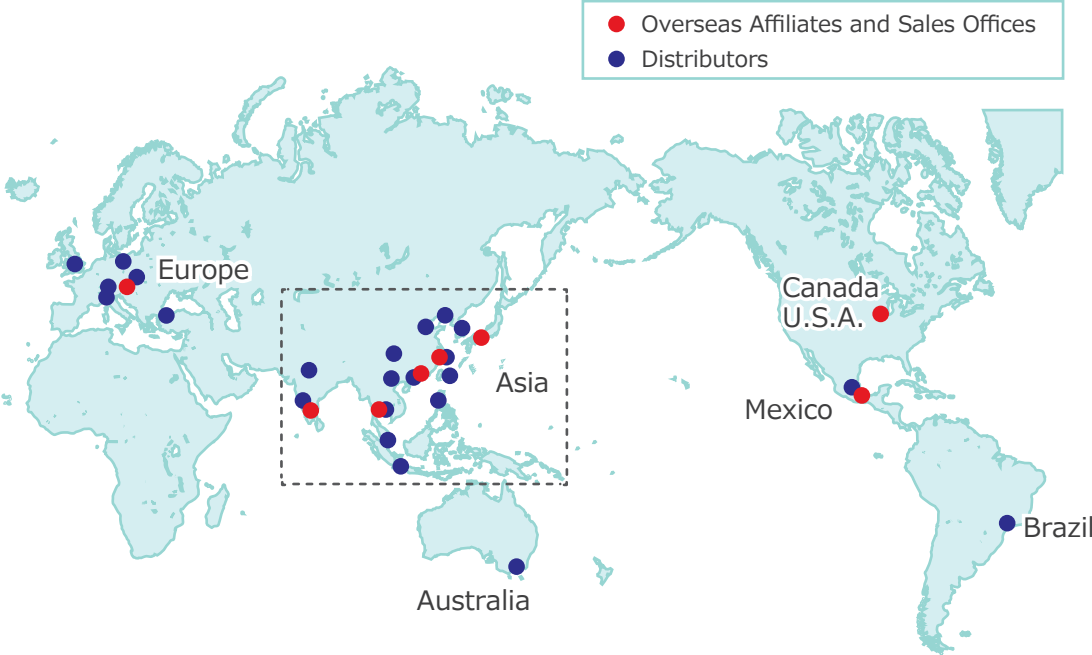
## Sales Offices across the World

JAPAN HEAD OFFICE Overseas Sales	<b>TEL. +81-78-991-5162</b>	<b>FAX. +81-78-991-8787</b>
	KOSMEK LTD. 1-5, 2-chome, Murotani, Nishi-ku, Kobe-city, Hyogo, Japan 651-2241 〒651-2241 兵庫県神戸市西区室谷2丁目1番5号	
United States of America SUBSIDIARY KOSMEK (USA) LTD.	<b>TEL. +1-630-620-7650</b>	<b>FAX. +1-630-620-9015</b>
	650 Springer Drive, Lombard, IL 60148 USA	
MEXICO REPRESENTATIVE OFFICE KOSMEK USA Mexico Office	<b>TEL. +52-442-161-2347</b>	
	Av. Santa Fe #103 int 59 Col. Santa Fe Juriquilla C.P. 76230 Queretaro, Qro Mexico	
EUROPE SUBSIDIARY KOSMEK EUROPE GmbH	<b>TEL. +43-463-287587</b>	<b>FAX. +43-463-287587-20</b>
	Schleppeplatz 2 9020 Klagenfurt am Wörthersee Austria	
CHINA KOSMEK (CHINA) LTD. 考世美(上海)貿易有限公司	<b>TEL. +86-21-54253000</b>	<b>FAX. +86-21-54253709</b>
	Room601, RIVERSIDE PYRAMID No.55, Lane21, Pusan Rd, Pudong Shanghai 200125, China 中国上海市浦东新区浦三路21弄55号银亿滨江中心601室 200125	
INDIA BRANCH OFFICE KOSMEK LTD - INDIA	<b>TEL. +91-9880561695</b>	
	4A/Old No:649, Ground Floor, 4th D cross, MM Layout,Kavalbyrasandra, RT Nagar, Bangalore -560032 India	
THAILAND REPRESENTATIVE OFFICE KOSMEK Thailand Representation Office	<b>TEL. +66-2-300-5132</b>	<b>FAX. +66-2-300-5133</b>
	67 Soi 58, RAMA 9 Rd., Suanluang, Suanluang, Bangkok 10250, Thailand	
TAIWAN (Taiwan Exclusive Distributor) Full Life Trading Co., Ltd. 盈生貿易有限公司	<b>TEL. +886-2-82261860</b>	<b>FAX. +886-2-82261890</b>
	16F-4, No.2, Jian Ba Rd., Zhonghe District, New Taipei City Taiwan 23511 台湾新北市中和區建八路2號 16F-4 (遠東世紀廣場)	
PHILIPPINES (Philippines Exclusive Distributor) G.E.T. Inc, Phil.	<b>TEL. +63-2-310-7286</b>	<b>FAX. +63-2-310-7286</b>
	Victoria Wave Special Economic Zone Mt. Apo Building, Brgy. 186, North Caloocan City, Metro Manila, Philippines 1427	
INDONESIA (Indonesia Exclusive Distributor) PT. Yamata Machinery	<b>TEL. +62-21-29628607</b>	<b>FAX. +62-21-29628608</b>
	Delta Commercial Park I, Jl. Kenari Raya B-08, Desa Jayamukti, Kec. Cikarang Pusat Kab. Bekasi 17530 Indonesia	

## Sales Offices in Japan

Head Office Osaka Sales Office Overseas Sales	<b>TEL. 078-991-5162</b>	<b>FAX. 078-991-8787</b>
	〒651-2241 兵庫県神戸市西区室谷2丁目1番5号	
Tokyo Sales Office	<b>TEL. 048-652-8839</b>	<b>FAX. 048-652-8828</b>
	〒331-0815 埼玉県さいたま市北区大成町4丁目81番地	
Nagoya Sales Office	<b>TEL. 0566-74-8778</b>	<b>FAX. 0566-74-8808</b>
	〒446-0076 愛知県安城市美園町2丁目10番地1	
Fukuoka Sales Office	<b>TEL. 092-433-0424</b>	<b>FAX. 092-433-0426</b>
	〒812-0006 福岡県福岡市博多区上牟田1丁目8-10-101	

# Global Network



Asia Detailed Map



● FOR FURTHER INFORMATION ON UNLISTED SPECIFICATIONS AND SIZES, PLEASE CALL US.  
 ● SPECIFICATIONS IN THIS CATALOG ARE SUBJECT TO CHANGE WITHOUT NOTICE.

