

## **Announcement of New Hole Clamp** **(model SFB)**

Dear Valued Customers,

First of all, thank you very much for your continued use of our products.

Today, please see below about our new product.

We are pleased to announce the new hole clamp model SFB with improved functions for automated production lines.

### 1. New features and improvements

- a. Smaller body size with cap is now available.

New body size with cap for hole diameters between 6-8.5mm has been added to the standard line up.

- b. Air port for release confirmation has been added.

When the piston rod reaches the release position, the air pressure in the sensing circuit increases to detect the release state.

- c. Improved the shape around the seating area.

New chamfer on the seating surface improves chip evacuation and allows for more convenient position of the air seat check holes.

- d. Now with overstroke prevention.

This product now includes overstroke prevention which eliminates the need for a precisely machined pocket for the cylinder of the clamp.

Details will be posted on our website soon.

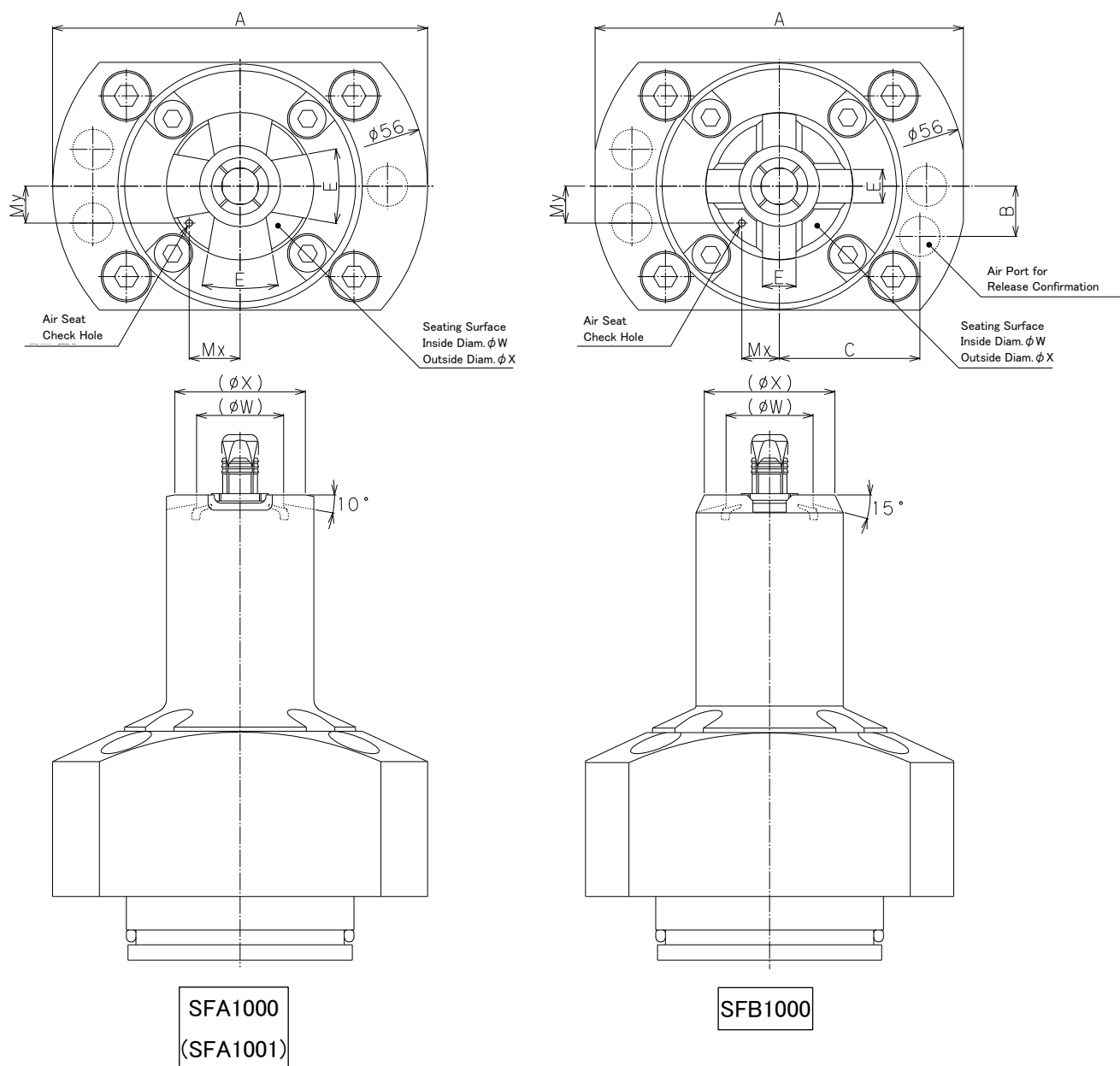
### 2. Model No.

| Product Name | New Model No.  | Current Model No.<br>(Sequentially Discontinued) | Model No. for maintenance of<br>current model (Continue to sell) |
|--------------|--|--|--|
| Hole Clamp   | <b>SFB0600</b><br>Additional body size with cap<br>for small hole diameter | —  | —  |
|              | <b>SFB1000</b>   | SFA1000  | SFA1001  |
|              | <b>SFB2000</b>   | SFA2000  | SFA2001  |
|              | <b>SFB3000</b>   | SFA3000  | SFA3001  |

### 3. Differences from the current products

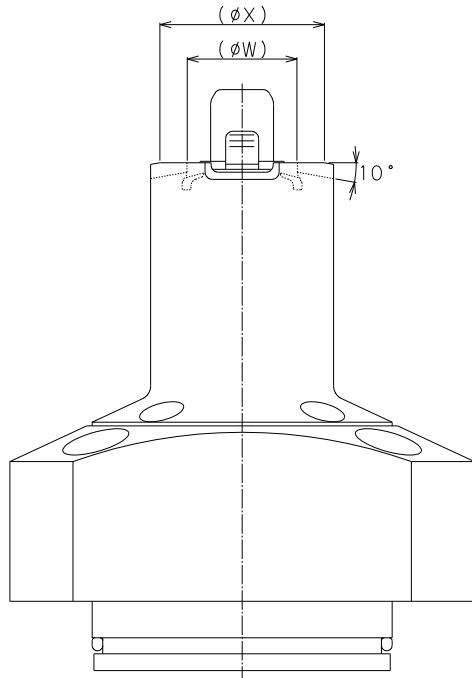
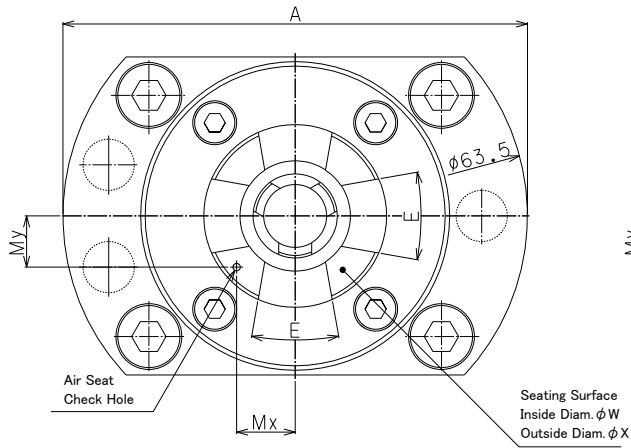
| Mounting Dimensions | Basic Specifications | External Dimensions                     | Position of<br>air seat check hole |
|---------------------|----------------------|---|------------------------------------|
| Not Different       |                      | Different (Refer to Note.4 shown below) |                                    |

#### 4. Changes in external dimensions and position of air seat check holes

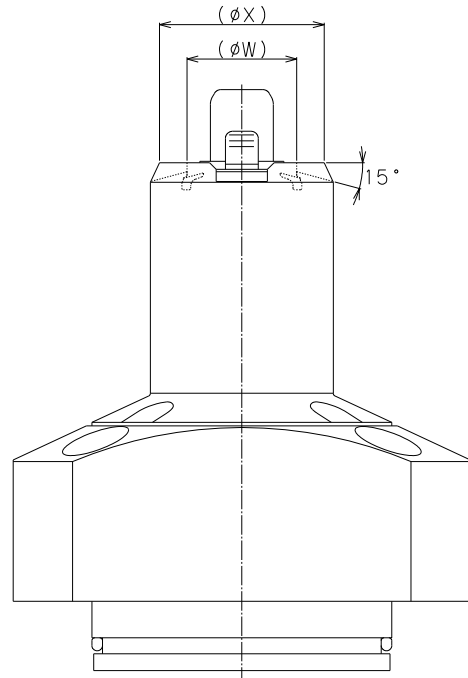
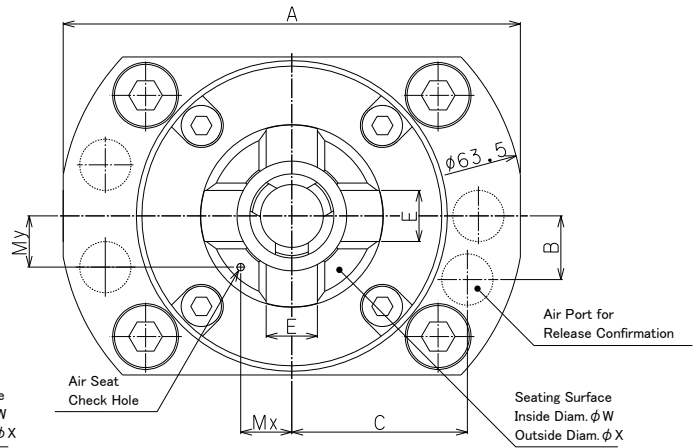


(mm)

|                          |  |         |     |         |     |         |     |
|--------------------------|--|---------|-----|---------|-----|---------|-----|
|                          | SFA1000(1001) → SFB1000                              |         |     |         |     |         |     |
| A                        | 56 → 55  |         |     |         |     |         |     |
| B                        | None → 7.5   |         |     |         |     |         |     |
| C                        | None → 21  |         |     |         |     |         |     |
| E                        | (20° ) → (Width 5mm) …Refer to CAD data for details. |         |     |         |     |         |     |
| Workpiece Hole<br>Symbol | 060  | 065     | 070 | 075     | 080 | 085     | 090 |
| W                        | 12→12.5  | 13→13.5 |     | 14→14.5 |     | 15→15.5 |     |
| X                        | 21→19.5  |         |     |         |     | 21→20.5 |     |
| Mx                       | 7.6→5.6  |         |     | 7.6→6.4 |     | 7.6→7   |     |
| My                       | 5.5→5.5  |         |     |         |     |         |     |



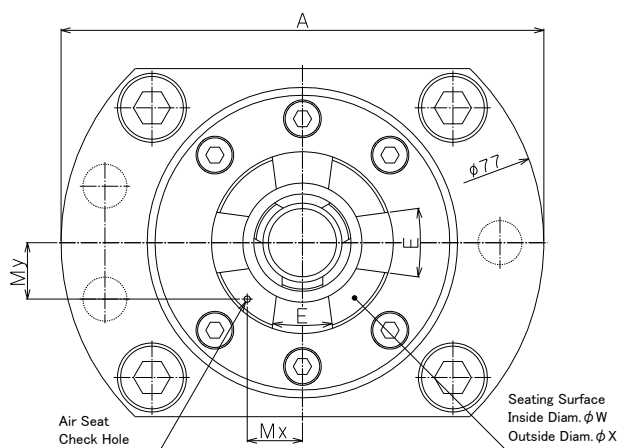
**SFA2000**  
(SFA2001)



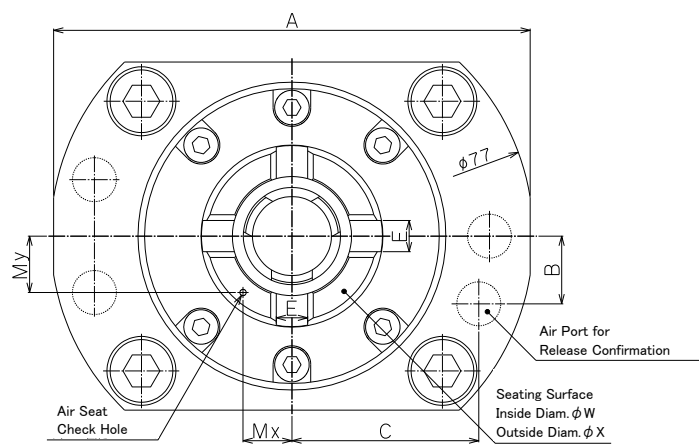
**SFB2000**

(mm)

|                          |  |             |     |             |     |             |     |             |     |
|--------------------------|--|-------------|-----|-------------|-----|-------------|-----|-------------|-----|
|                          | SFA2000(2001) → SFB2000                              |             |     |             |     |             |     |             |     |
| A                        | 63.5 → 62.5  |             |     |             |     |             |     |             |     |
| B                        | None → 8.7   |             |     |             |     |             |     |             |     |
| C                        | None → 24  |             |     |             |     |             |     |             |     |
| E                        | (20° ) → (Width 7mm) …Refer to CAD data for details. |             |     |             |     |             |     |             |     |
| Workpiece Hole<br>Symbol | 090  | 095         | 100 | 105         | 110 | 115         | 120 | 125         | 130 |
| W                        | 15→<br>15.5  | 16→<br>16.5 |     | 17→<br>17.5 |     | 18→<br>18.5 |     | 19→<br>19.5 |     |
| X                        | 24→22.5  |             |     |             |     | 25→23.5     |     | 26→25.5     |     |
| Mx                       | 8→7  |             |     | 8→7.1       |     | 8.6→7.8     |     | 9.3→9       |     |
| My                       | 7→7  |             |     |             |     |             |     |             |     |



**SFA3000**  
(SFA3001)



**SFB3000**

(mm)

|                          |  |         |     |         |     |         |     |
|--------------------------|--|---------|-----|---------|-----|---------|-----|
|                          | SFA3000(3001) → SFB3000                              |         |     |         |     |         |     |
| A                        | 77 → 76  |         |     |         |     |         |     |
| B                        | None → 10.8  |         |     |         |     |         |     |
| C                        | None → 29.8  |         |     |         |     |         |     |
| E                        | (15° ) → (Width 5mm) …Refer to CAD data for details. |         |     |         |     |         |     |
| Workpiece Hole<br>Symbol | 130  | 135     | 140 | 145     | 150 | 155     | 160 |
| W                        | 19→19.5  | 20→20.5 |     | 21→21.5 |     | 22→22.5 |     |
| X                        | 28→27  |         |     |         |     | 29→28   |     |
| Mx                       | 8.8→7.8  |         |     |         |     | 9.6→8.8 |     |
| My                       | 9→9  |         |     |         |     |         |     |

5. Schedule

New model SFB will be available from October 18, 2023.

Current model SFA will be sequentially discontinued.

However, we will continue to sell SFA for maintenance and servicing.

Please contact our sales representatives for further inquiries.

Yours Sincerely  
KOSMEK LTD.