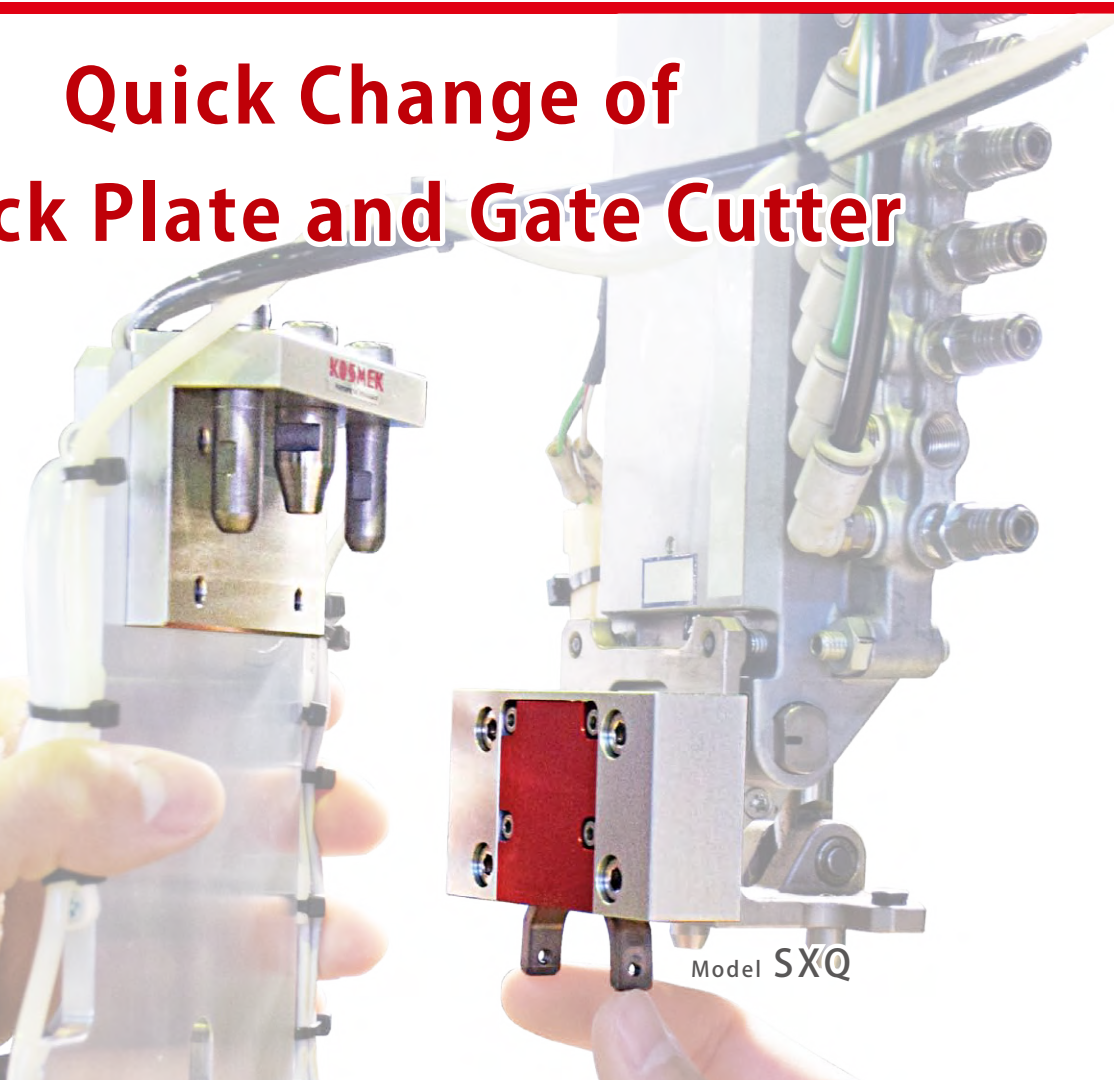


New

For Injection Molding Picker Robot

Quick Chuck Changer

Quick Change of Chuck Plate and Gate Cutter



Tool Adapter



Master Cylinder

Model SXQ0150

New

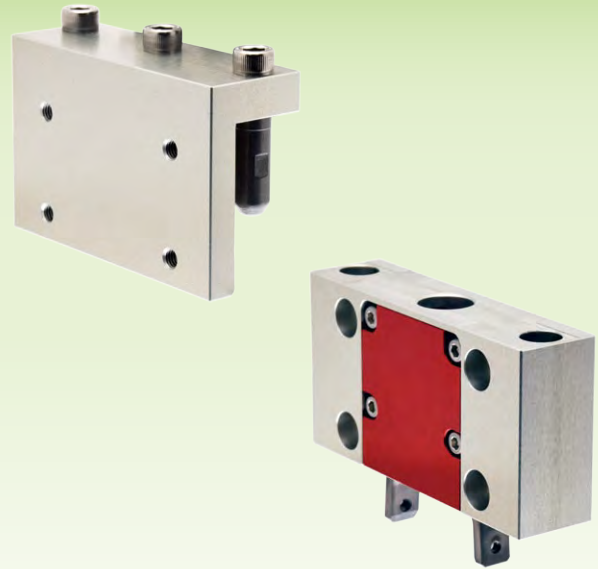
Payload **15 kg !**

Additional Line-up !

Quick Chuck Changer

Quick Chuck Changer

Model SXQ



Simple and Quick Change of Chuck Plate to Reduce Setup Time

Introducing Quick Chuck Changer Specially Designed for Picker Robot

PAT.P.

● Application Examples

Changing Chuck Plate



Application Example of SXQ0030 (Payload : 5kg)

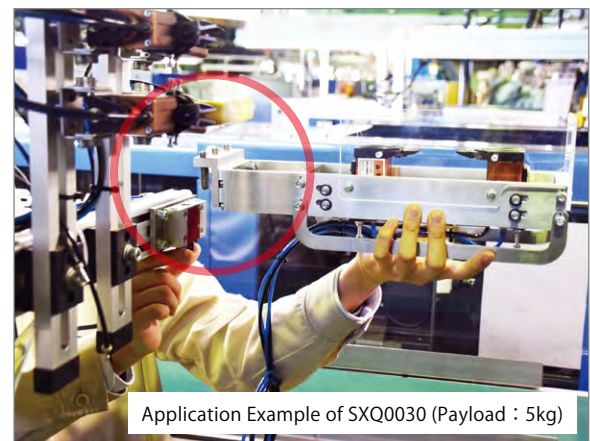


Application Example of SXQ0030 (Payload : 5kg)



Application Example of SXQ0150 (Payload : 15kg)

Changing Gate Cutter



Application Example of SXQ0030 (Payload : 5kg)

Features

with Locating Function

Repeatability
0.05mm ※1

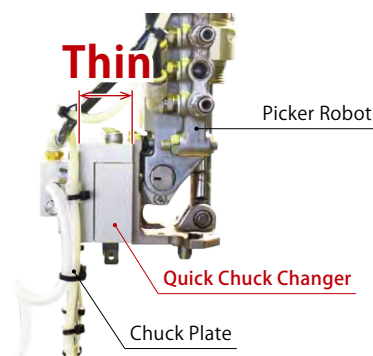
※1. Repeatability : 0.1mm
for SXQ0150 (Payload : 15kg)

- **Adjusting** the mounting position of the end of arm tooling is **not required**.
- **No need to teach** the picker robot **again**.

**Drastically
reduce
setup time!**

Direct mounting is possible
for some picker robots.

Adapter plate is not required, so the thickness of changer part can be minimized.



• Features : SXQ0030 (Payload : 5kg)

Releasing arms can be **customized**
for more flexible use. ※2

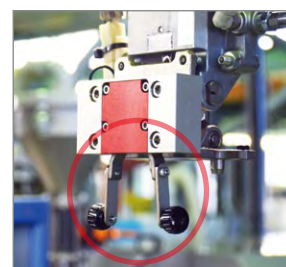
In case it is hard to reach releasing arms due to the shape of a chuck plate, they can be customized by mounting attachments to extra tapped holes for more flexible use.

(Attachments should be mounted by customer.)

※2. Available only for SXQ0030 (Payload : 5kg) .



Ex. 1) Making arms thicker so that it is easier to push.

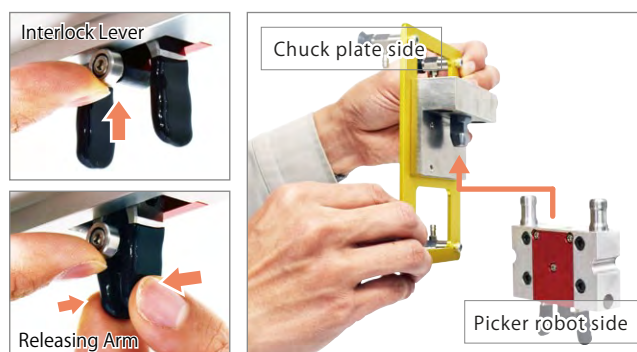


Ex. 2) Making arms longer so that it is easier to reach.

• Features : SXQ0150 (Payload : 15kg)

The chuck plate can be removed
with both hands for **safety**. ※3

The interlock lever allows the changer to remain unlocked, making it possible to safely remove even large and heavy chuck plates by holding the chuck plate with both hands.



With lifting the interlock lever, pinch the releasing arms to keep the changer unlocked.

Coated arms for
easy gripping ※3

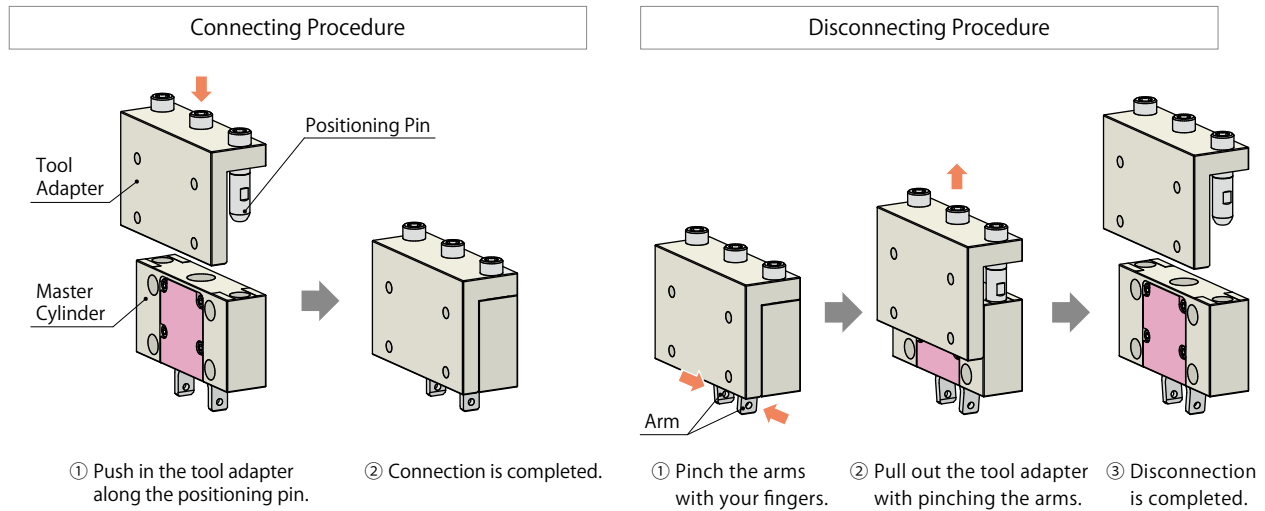
Coating on unique arm shape based on ergonomics.
Easier to grip and less slippery.

※3. Available only for SXQ0150 (Payload : 15kg).



Coating on arms

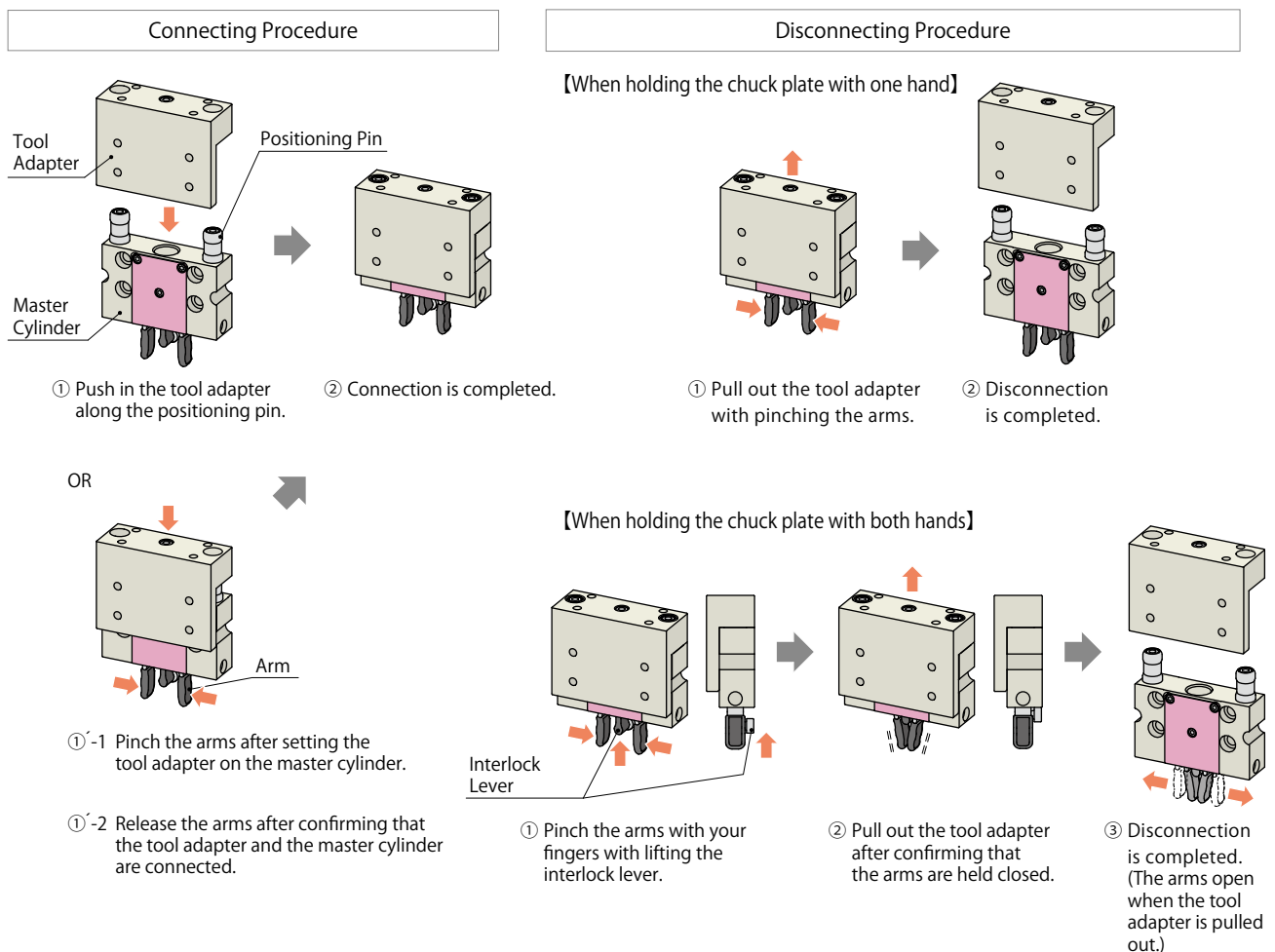
● Action Description : SXQ0030 (Payload : 5kg)



OR

- ①'-1 Pinch the arms after setting the tool adapter on the master cylinder.
- ①'-2 Release the arms after confirming that the tool adapter and the master cylinder are connected.

● Action Description : SXQ0150 (Payload : 15kg)



Notes :

1. Use the interlock lever only when the chuck plate is too heavy to disconnect with one hand. Also, once the arms are held closed, make sure to disconnect it by pulling out the tool adapter. This product is not locked when its arms are closed. If using it without locking, the connection between the tool adapter and the master cylinder may be released by the operation of the picker robot, which is extremely dangerous.

Model No. Indication

Master Cylinder



Tool Adapter



SXQ **003** **0** - **M** **Y**

1 2 3 4

SXQ **003** **0** - **T** **Y**

1 2 3 4

1 Payload

003 : ~ 5 kg

015 : ~ 15 kg

2 Design No.

0 : Revision Number

3 Category

M : Master Cylinder

T : Tool Adapter

4 Applicable Picker Robot

S : Picker Robot manufactured by STAR SEIKI CO., LTD.

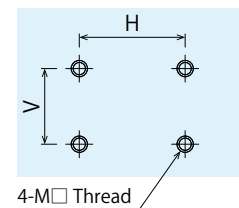
(Mounting Dimension: H 50mm × V 20mm, M6×1 Thread)

Y : Picker Robot manufactured by Yushin Company

(Mounting Dimension: H 50mm × V 27mm, M5×0.8 Thread)

Note :

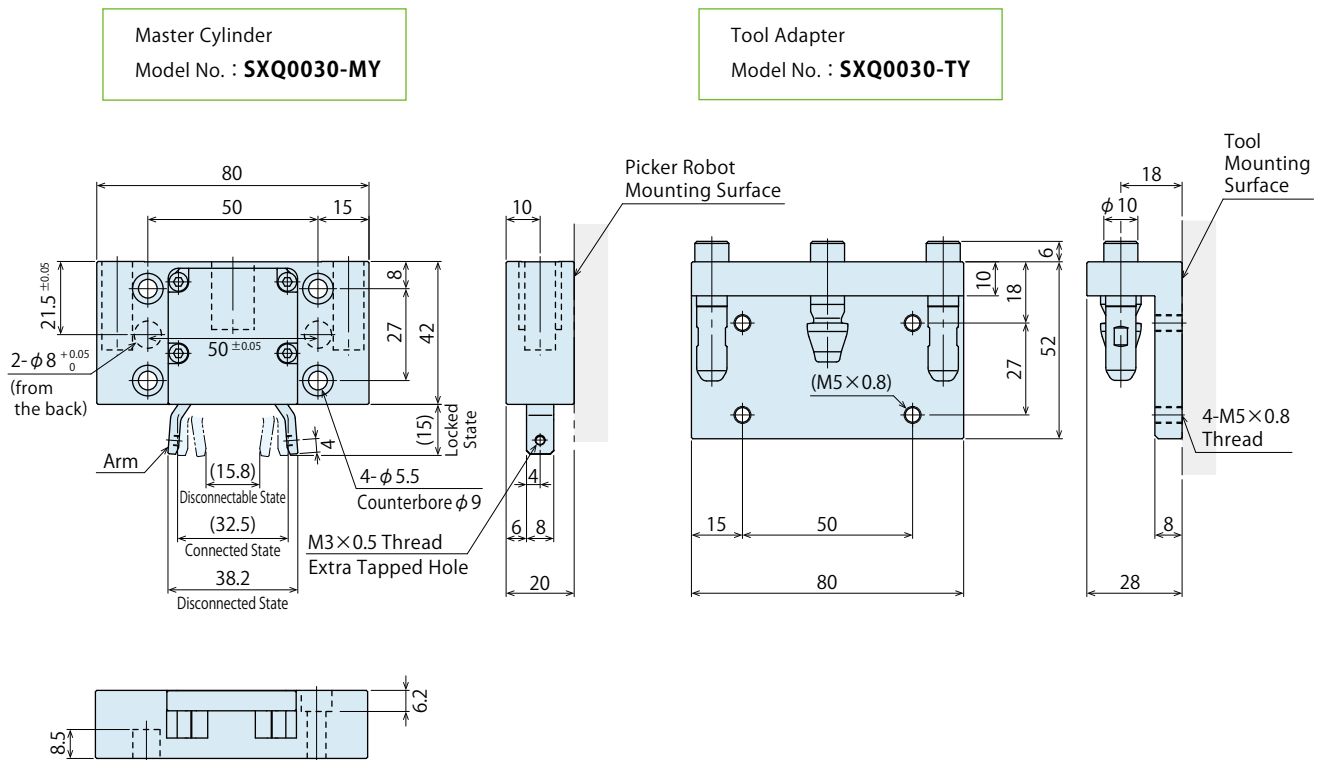
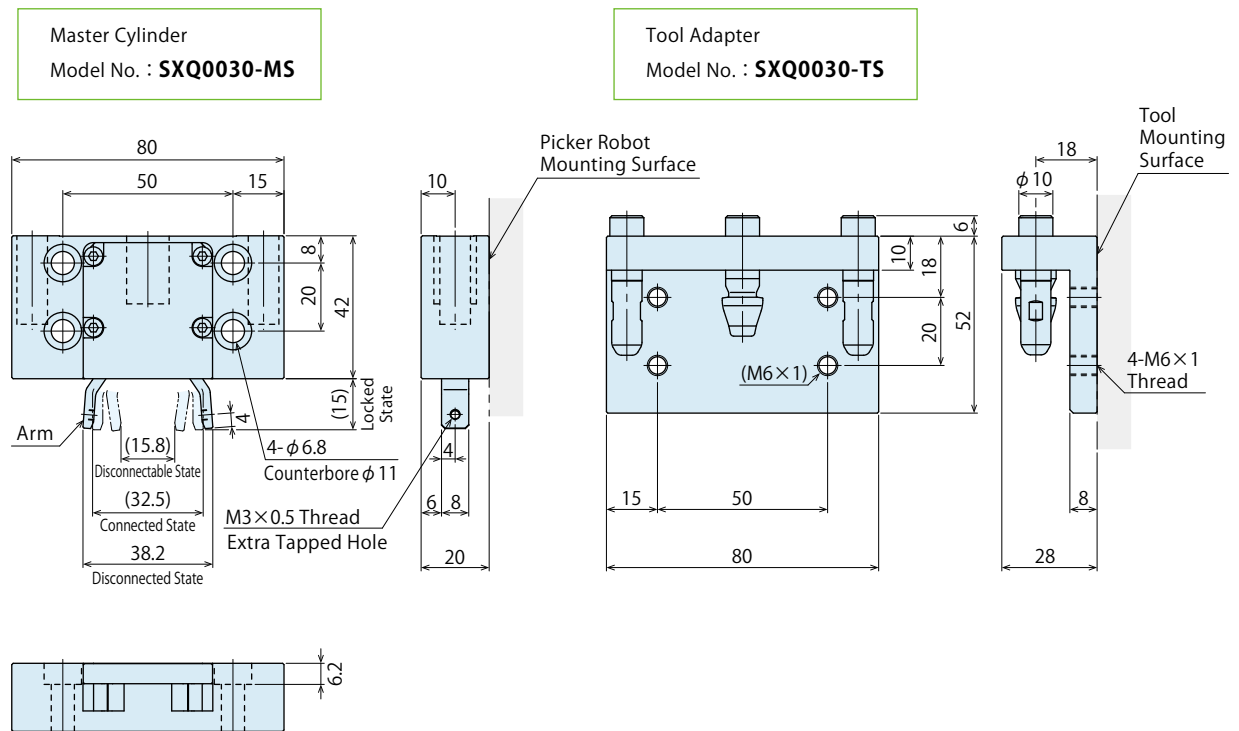
※1. For other picker robots, please design and mount an adapter plate between a picker robot and a changer. Use the accessory or design an adapter plate according to the design dimensions.



Specifications

Model No.			SXQ0030	SXQ0150	
Payload			kg	~ 5	~ 15
Repeatability			mm	0.05	0.1
Allowable	Bending	N•m	4	12	
	Twisting	N•m	10	32	
Product Weight	Master Side	g	170	280	
	Tool Side	g	180	220	
Lock Releasing Force (Arm Part)			N	About 20	About 20
Operating Temperature			℃	0 ~ 70	

● External Dimensions : SXQ0030 (Payload : 5kg)



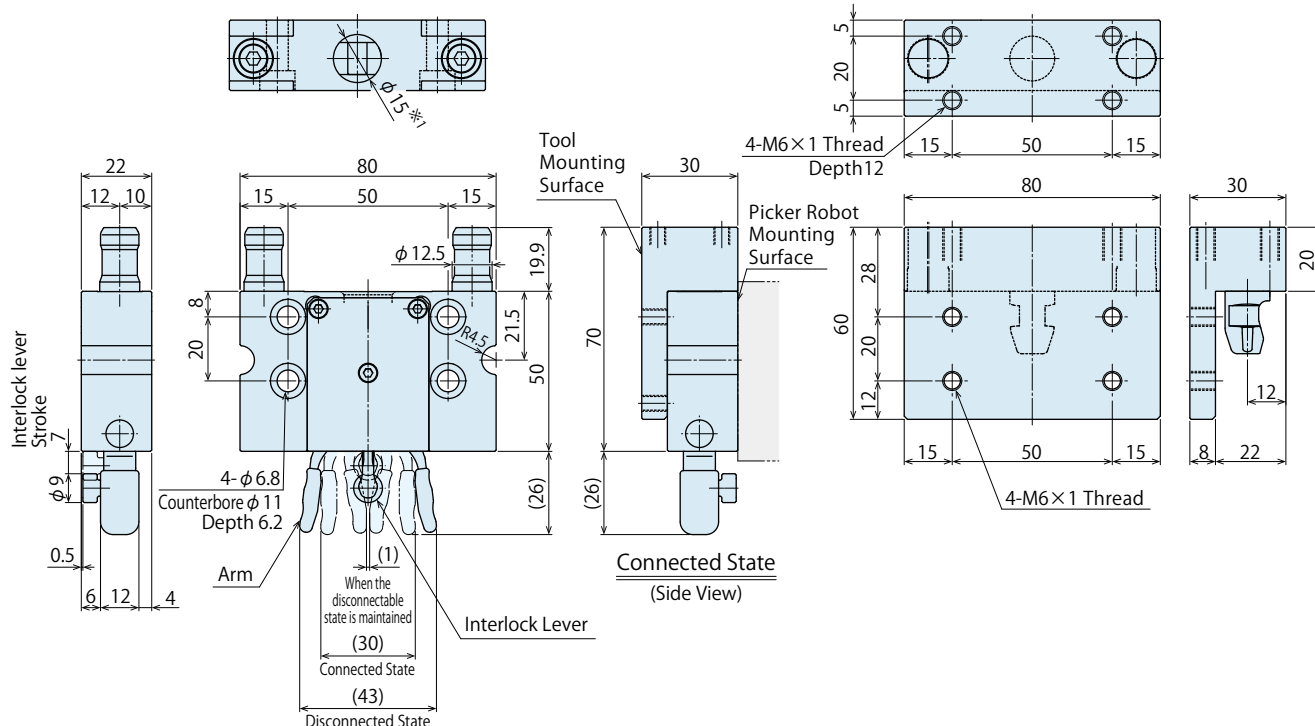
Notes :

1. This product becomes locked state with internal spring force by pushing the tool adapter into the master cylinder, or by setting the tool adapter on the master cylinder, pinching the arms, and releasing the arms after connection.
2. Be careful not to pinch your fingers or hands as the space between the arms becomes narrow during the locking action.

● External Dimensions : SXQ0150 (Payload : 15kg)

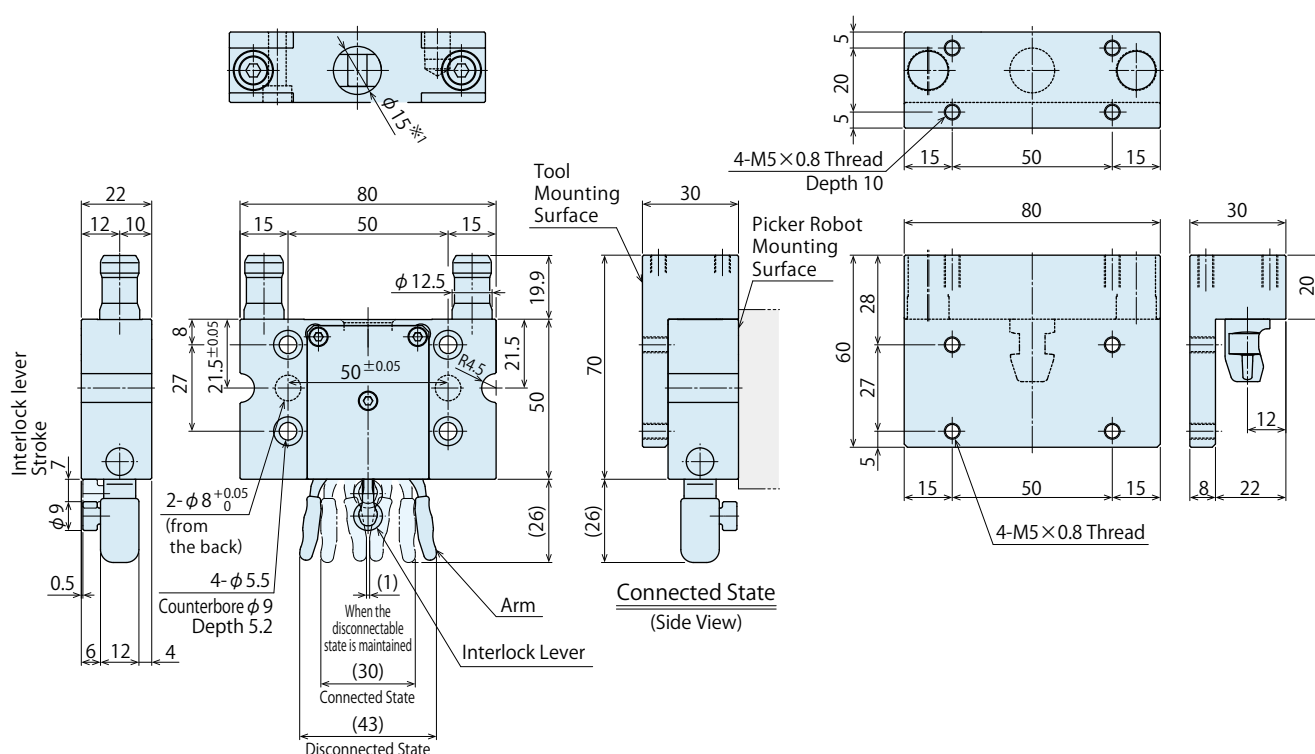
Model No. : **SXQ0150-MS**

Model No. : **SXQ0150-TS**



Model No. : **SXQ0150-MY**

Model No. : **SXQ0150-TY**



Notes :

1. This product becomes locked state with internal spring force by pushing the tool adapter into the master cylinder, or by setting the tool adapter on the master cylinder, pinching the arms, and releasing the arms after connection.

Also, once the arms are held closed, make sure to disconnect it by pulling out the tool adapter.

This product is not locked when its arms are closed. If using it without locking, the connection between the tool adapter and the master cylinder may be released by the operation of the picker robot, which is extremely dangerous.

※1. Do not put your fingers in the master cylinder $\phi 15$ hole. It is dangerous because your fingers may be caught by internal locking mechanism.

● **Accessory : Adapter Plate**

● **Model No. Indication**

For Master Cylinder

For Tool Adapter

SXQZ0 **H** **0** - **M** **S**

1
2
3
4

SXQZ0 **H** **0** - **T** **S**

1
2
3
4

1 Applicable Picker Robot

- H** : Picker Robot manufactured by HARMO CO., LTD.
(Mounting Dimension: H 70mm × V 40mm, M6×1 Thread)
- S** : Picker Robot manufactured by STAR SEIKI CO., LTD.
(Mounting Dimension: H 130mm × V 40mm, M8×1.25 Thread)
- Y** : Picker Robot manufactured by Yushin Company
(Mounting Dimension: H 80mm × V 40mm, M6×1 Thread)

2 Design No.

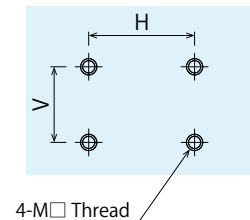
- 0** : Revision Number

3 Category

- M** : For Master Cylinder
- T** : For Tool Adapter

4 Quick Chuck Changer

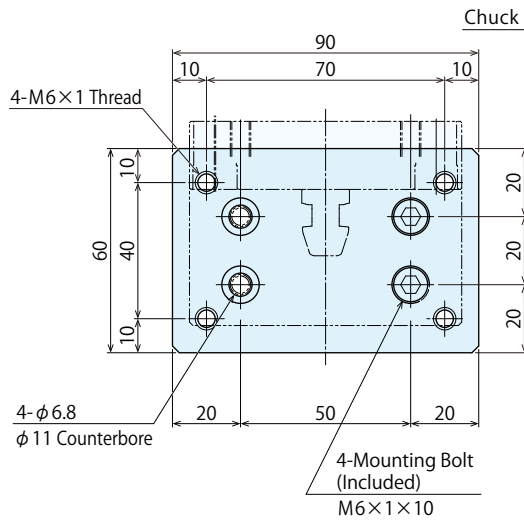
- S** : Picker Robot manufactured by STAR SEIKI CO., LTD.
(Mounting Dimension: H 50mm × V 20mm, M6×1 Thread)
(Applicable Model No. : SXQ0030-□S / SXQ0150-□S) (In case of **1** **H** / **S**)
- Y** : Picker Robot manufactured by Yushin Company
(Mounting Dimension: H 50mm × V 27mm, M5×0.8 Thread)
(Applicable Model No. : SXQ0030-□Y / SXQ0150-□Y) (In case of **1** **H** / **Y**)



External Dimensions

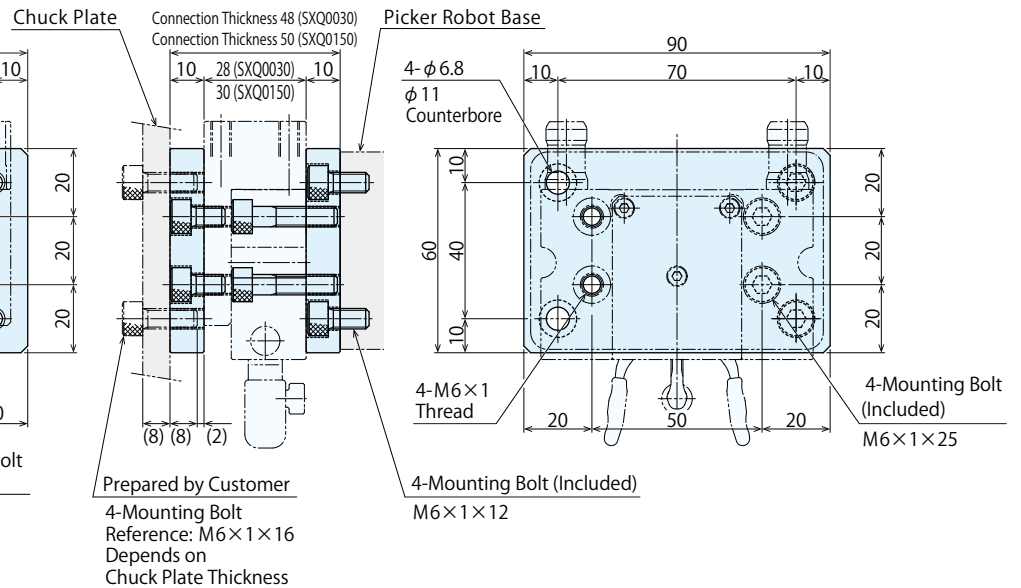
For Tool Adapter
Model No. : **SXQZ0H0-TS**

Weight : 150g



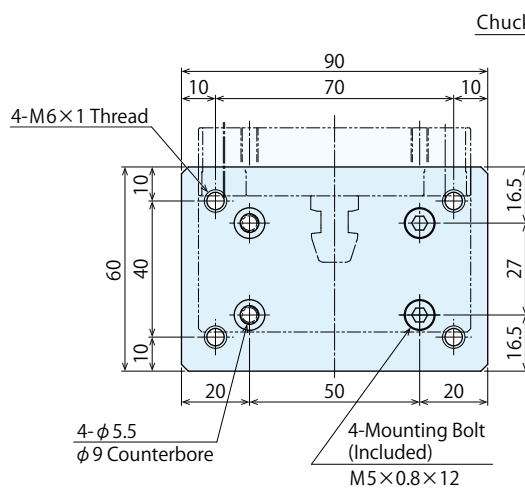
For Master Cylinder
Model No. : **SXQZ0H0-MS**

Weight : 150g



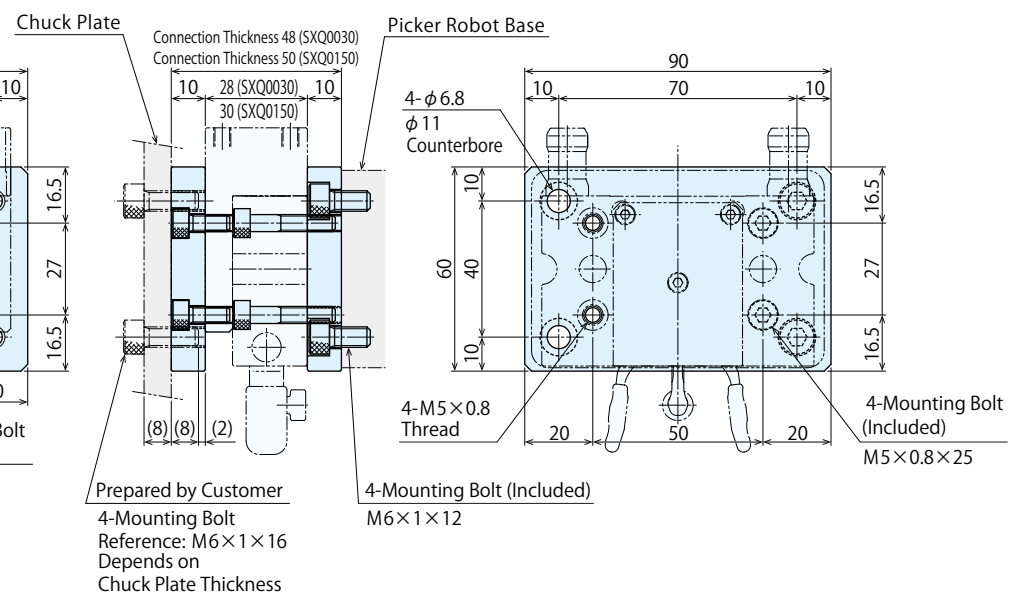
For Tool Adapter
Model No. : **SXQZ0H0-TY**

Weight : 150g



For Master Cylinder
Model No. : **SXQZ0H0-MY**

Weight : 150g



Note :

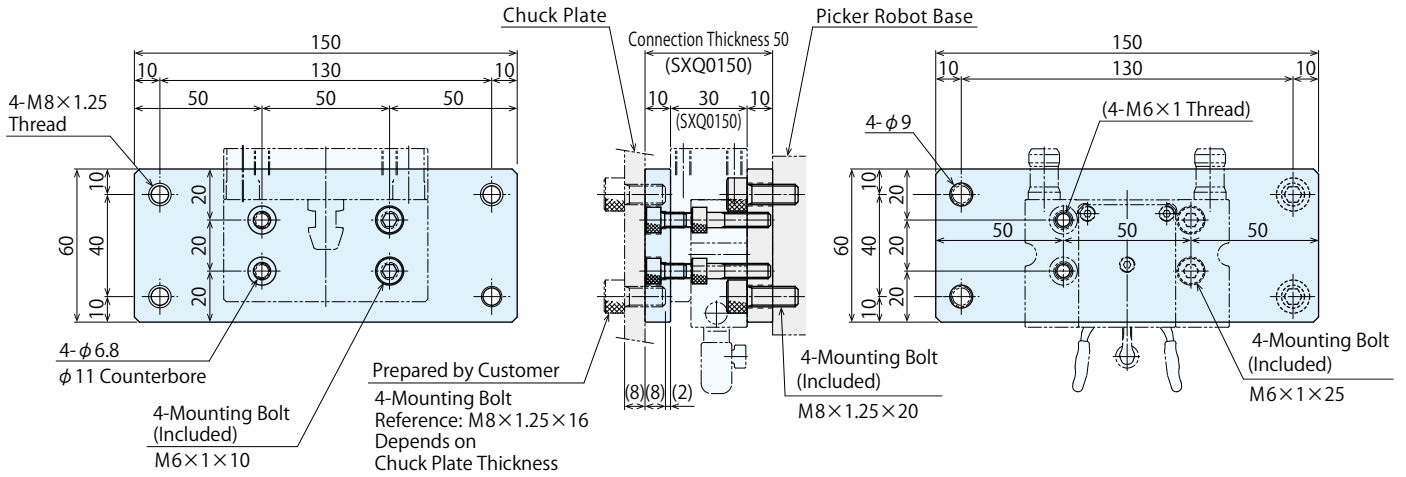
1. Material : A2017, Surface Finishing : Anodized Aluminum Coating

For Tool Adapter
Model No. : **SXQZ050-TS**

Weight : 240g

For Master Cylinder
Model No. : **SXQZ050-MS**

Weight : 240g

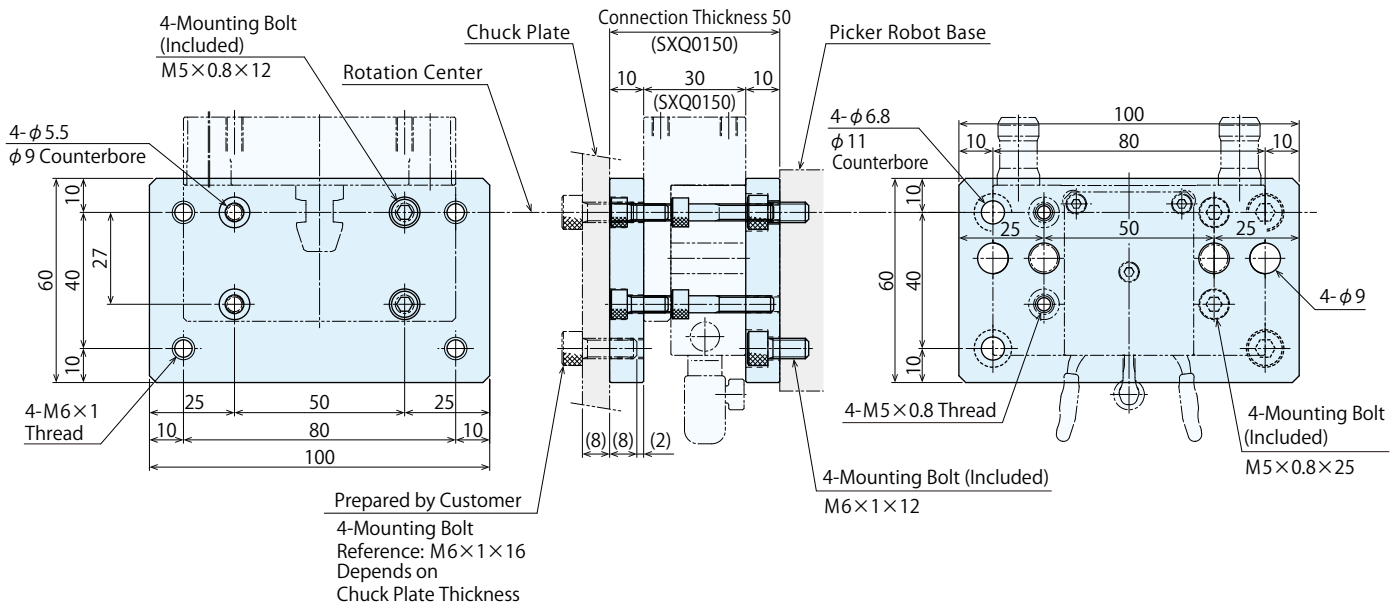


For Tool Adapter
Model No. : **SXQZ0Y0-TY**

Weight : 160g

For Master Cylinder
Model No. : **SXQZ0Y0-MY**

Weight : 160g

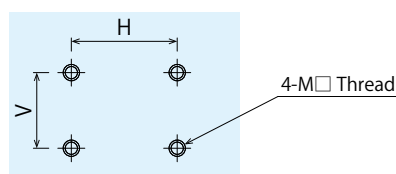


Note :

1. Material : A2017, Surface Finishing : Anodized Aluminum Coating

Adapter Plate Design Dimensions

※ Dimensions in () are reference.



Picker Robot Side Mounting Dimensions

: For Picker Robot manufactured by HARMO CO., LTD.

(Mounting Dimensions : H 70mm × V 40mm, M6×1 Thread)

Quick Chuck Changer Side Mounting Dimensions

: For Picker Robot manufactured by STAR SEIKI CO., LTD.

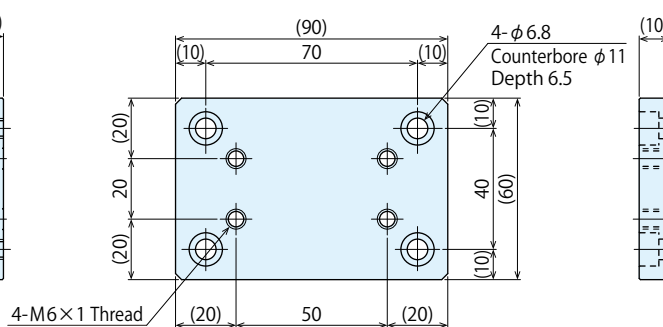
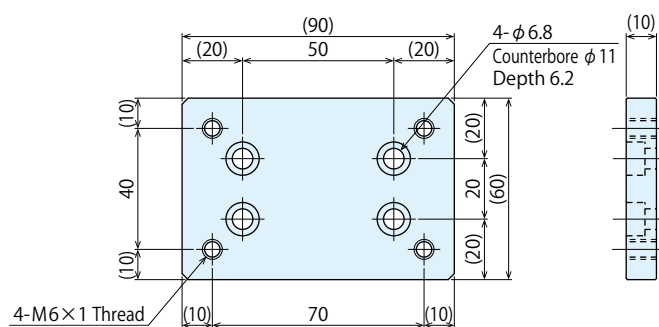
(Mounting Dimensions : H 50mm × V 20mm, M6×1 Thread)

For Tool Adapter

Applicable Model No. : SXQ0030-TS / SXQ0150-TS

For Master Cylinder

Applicable Model No. : SXQ0030-MS / SXQ0150-MS



Picker Robot Side Mounting Dimensions

: For Picker Robot manufactured by HARMO CO., LTD.

(Mounting Dimensions : H 70mm × V 40mm, M6×1 Thread)

Quick Chuck Changer Side Mounting Dimensions

: For Picker Robot manufactured by Yushin Company

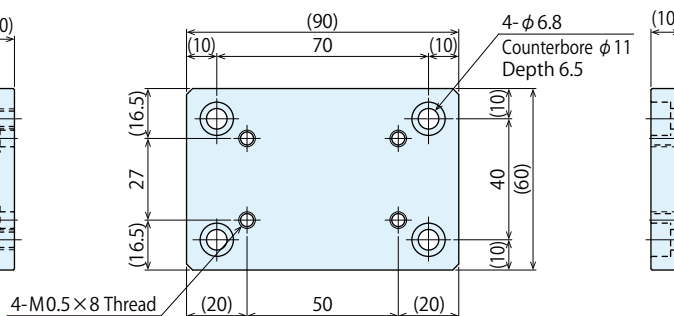
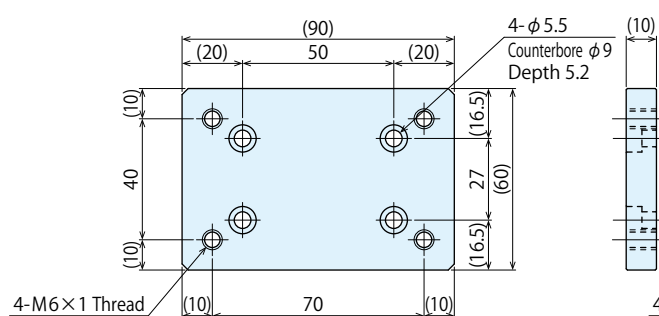
(Mounting Dimensions : H 50mm × V 27mm, M5×0.8 Thread)

For Tool Adapter

Applicable Model No. : SXQ0030-TY / SXQ0150-TY

For Master Cylinder

Applicable Model No. : SXQ0030-MY / SXQ0150-MY



Picker Robot Side Mounting Dimensions

: For Picker Robot manufactured by STAR SEIKI CO., LTD.

(Mounting Dimensions : H 130mm × V 40mm, M8×1.25 Thread)

Quick Chuck Changer Side Mounting Dimensions

: For Picker Robot manufactured by STAR SEIKI CO., LTD.

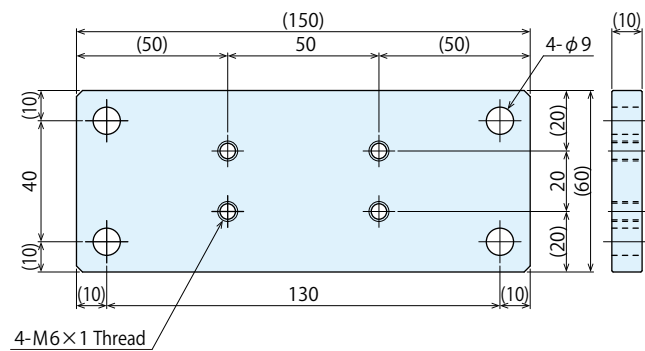
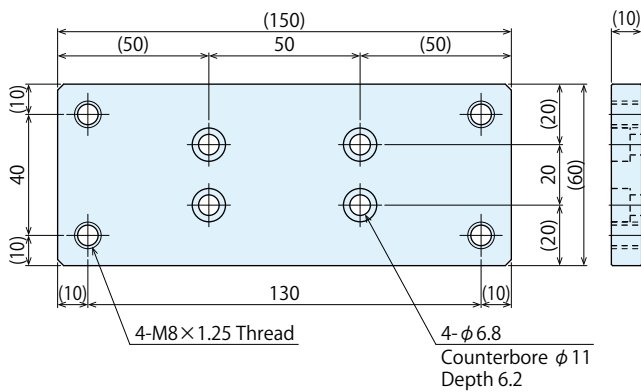
(Mounting Dimensions : H 50mm × V 20mm, M6×1 Thread)

For Tool Adapter

Applicable Model No. : SXQ0030-TS / SXQ0150-TS

For Master Cylinder

Applicable Model No. : SXQ0030-MS / SXQ0150-MS



Picker Robot Side Mounting Dimensions

: For Picker Robot manufactured by Yushin Company

(Mounting Dimensions : H 80mm × V 40mm, M6×1 Thread)

Quick Chuck Changer Side Mounting Dimensions

: For Picker Robot manufactured by Yushin Company

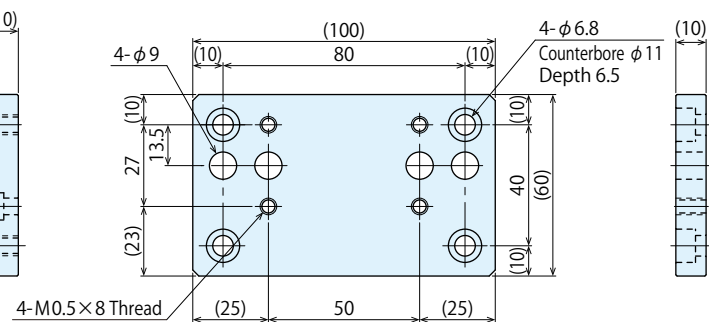
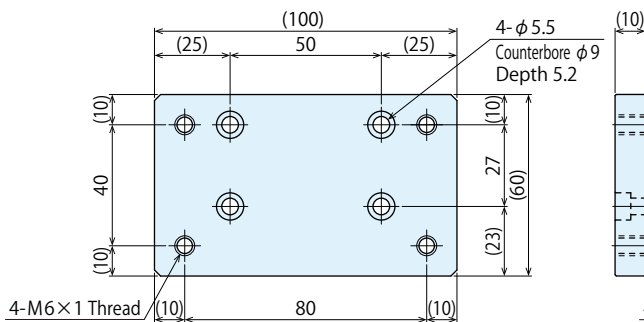
(Mounting Dimensions : H 50mm × V 27mm, M5×0.8 Thread)

For Tool Adapter

Applicable Model No. : SXQ0030-TY / SXQ0150-TY

For Master Cylinder

Applicable Model No. : SXQ0030-MY / SXQ0150-MY



● Cautions

● Notes for Design

- 1) Check Specifications
 - Please use the product according to the specifications.
 - This product becomes locked state with internal spring force by pushing the tool adapter into the master cylinder, or by setting the tool adapter on the master cylinder, pinching the arms, and releasing the arms after connection.
- 2) Combination of Master Cylinder and Tool Adapter
 - The combination of master cylinder and tool adapter should be as follows.

Master Cylinder	Tool Adapter
SXQ0030-MY	SXQ0030-TY
	SXQ0030-TS
SXQ0030-MS	SXQ0030-TY
	SXQ0030-TS
SXQ0150-MY	SXQ0150-TY
	SXQ0150-TS
SXQ0150-MS	SXQ0150-TY
	SXQ0150-TS

- 3) Allowable Static Moment
 - The allowable static moment should be within the range of the bending moment and the twisting moment.

Also, please select the size sufficient for the moment.

Model No.	Bending Moment	Twisting Moment
SXQ0030	4 N·m	10 N·m
SXQ0150	12 N·m	32 N·m

- 4) Chuck Plate Change (Attaching and Detaching)
 - Connect the master cylinder and the tool adapter along the positioning pin.

Connecting with a tilt may cause damage on the locating part leading to insufficient repeatability.

Also, when attaching and detaching, be careful with the posture of the quick chuck changer and not to apply excessive moment.

● Installation Notes

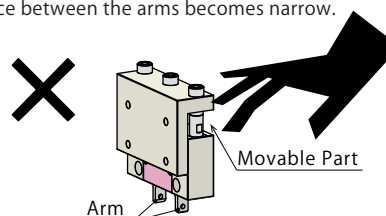
- 1) Installation and Removal of Master Cylinder / Tool Adapter
 - Tighten the mounting bolt with the following torque.

When mounting, tighten the bolts evenly not to incline the master cylinder and the tool adapter.

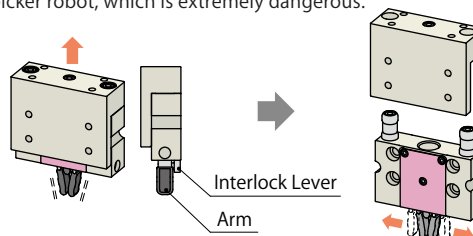
	Model No.	Bolt Size	Bolt Qty	Tightening Torque
Master Cylinder	SXQ0030-MY	M5×0.8	4	6.3 N·m
	SXQ0030-MS	M6×1	4	10 N·m
	SXQ0150-MY	M5×0.8	4	6.3 N·m
	SXQ0150-MS	M6×1	4	10 N·m
Tool Adapter	SXQ0030-TY	M5×0.8	4	6.3 N·m
	SXQ0030-TS	M6×1	4	10 N·m
	SXQ0150-TY	M5×0.8	4	6.3 N·m
	SXQ0150-TS	M6×1	4	10 N·m

● Notes on Handling

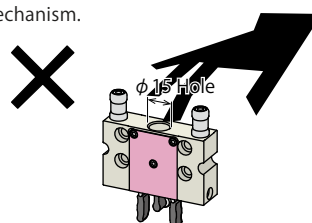
- 1) Be careful not to drop a chuck plate when changing (attaching and detaching) the chuck plate.
 - Ensure that a fall prevention measure of a chuck plate is in place before releasing the quick chuck changer. Otherwise it may cause damage to the chuck plate or an accident.
- 2) It should be operated by qualified personnel.
 - Machines and devices should be operated and maintained by qualified personnel.
- 3) Do not operate or remove the product unless the safety protocols are ensured.
 - ① Machines and devices can only be inspected or prepared when it is confirmed that the safety devices are in place.
 - ② Before the product is removed, make sure that the above-mentioned safety devices are in place.
 - ③ After stopping the product, do not remove until the temperature cools down.
 - ④ Make sure there is no trouble/issue in the bolts and respective parts before restarting the machine or equipment.
- 4) Do not disassemble or modify.
 - If the product is taken apart or modified, the warranty will be voided even within the warranty period.
- 5) Be careful not to pinch your fingers or hands during locking action.
 - Do not place your hand on the movable part during locking action. Also, be careful not to pinch your fingers or hands as the space between the arms becomes narrow.



- 6) For SXQ0150, use the interlock lever only when the chuck plate is too heavy to disconnect with one hand. Also, once the arms are held closed, make sure to disconnect it by pulling out the tool adapter. This product is not locked when its arms are closed. If using it without locking, the connection between the tool adapter and the master cylinder may be released by the operation of the picker robot, which is extremely dangerous.

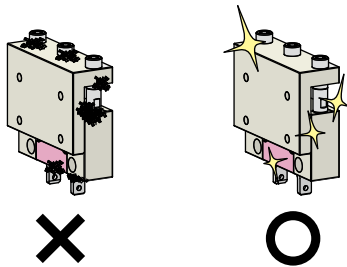


- 7) For SXQ0150, do not put your fingers in the master cylinder $\phi 15$ hole. It is dangerous because your fingers may be caught by internal locking mechanism.



Maintenance and Inspection

- 1) Notes on Product Removal
 - Before removing the product, make sure that safety devices and preventive devices are in place.
Also, make sure there is no trouble/issue in the bolts and respective parts before restarting.
- 2) Cleaning of Master Cylinder and Tool Adapter
 - Use of the master cylinder and the tool adapter when they are contaminated with dirt or viscous substances will cause locating accuracy failure and malfunction.



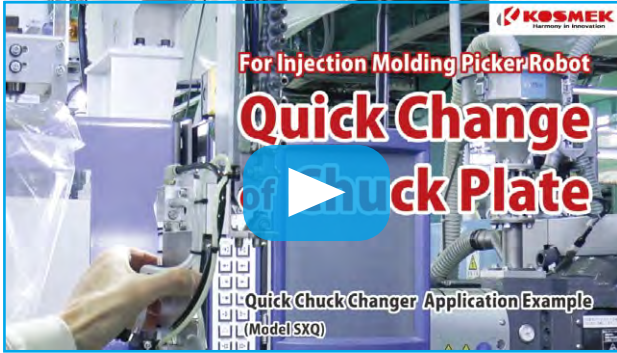
- 3) Regularly tighten mounting bolts to ensure proper use.
- 4) Make sure there is smooth action without an irregular noise.
 - Especially when it is restarted after left unused for a long period, make sure it can be operated properly.
- 5) The product should be stored in the cool and dark place without direct sunshine or moisture.
- 6) Please apply the grease periodically.
(Grease applied at shipment: Equal to STABURAGS NBU 8 EP made by NOK.)
- 7) Please contact us for overhaul and repair.

Warranty

- 1) Warranty Period
 - The product warranty period is 18 months from shipment from our factory or 12 months from initial use, whichever is earlier.
 - 2) Warranty Scope
 - If the product is damaged or malfunctioned during the warranty period due to a faulty design, materials or workmanship, we will replace or repair the defective part at our expense.
Defects or failures caused by the following are not covered.
- ① If the stipulated maintenance and inspection are not carried out.
 - ② If the product is used while it is not suitable for use based on the operator's judgement, resulting in defect.
 - ③ If it is used or handled in inappropriate way by the operator.
(Including damage caused by the misconduct of the third party.)
 - ④ If the defect is caused by reasons other than our responsibility.
 - ⑤ If repair or modifications are carried out by anyone other than Kosmek, or without our approval and confirmation, it will void warranty.
 - ⑥ Other caused by natural disasters or calamities not attributable to our company.
 - ⑦ Parts or replacement expenses due to parts consumption and deterioration. (Such as rubber, plastic, seal material and some electric components.)

Damages excluding from direct result of a product defect shall be excluded from the warranty.

See the Video and CAD data>>>



Application example video of SXQ0030 (Payload : 5kg) installed to an actual picker robot is available on our website.

http://www.kosmek.co.jp/php_file/video_products.php?id=114&lang=2



Chuck Plate Change Over Time Comparison: Standard Mounting vs SXQ0030 (Payload : 5kg) is available on our website.

http://www.kosmek.co.jp/php_file/video_products.php?id=164&lang=2



A video explaining the operation and safety of SXQ0150 (Payload: 15 kg) is available on our website.

http://www.kosmek.co.jp/php_file/video_products.php?id=148&lang=2

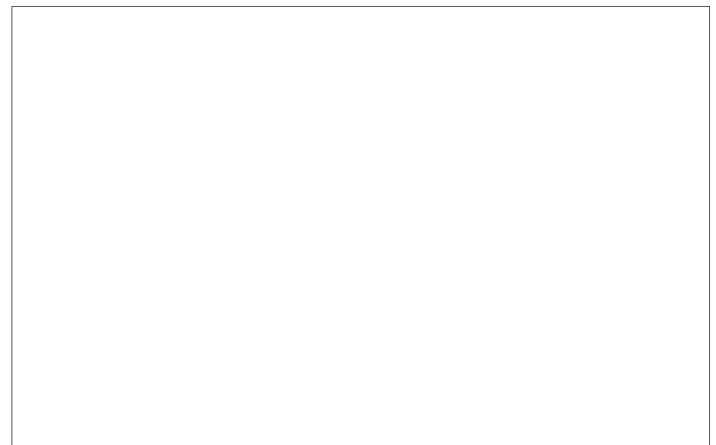


KOSMEK LTD.

► <https://www.kosmek.com/>

HEAD OFFICE 1-5, 2-chome, Murotani, Nishi-ku, Kobe-city, Hyogo, Japan 651-2241
TEL.+81-78-991-5162 FAX.+81-78-991-8787

United States of America SUBSIDIARY	KOSMEK (USA) LTD. 650 Springer Drive, Lombard, IL 60148 USA TEL. +1-630-620-7650 FAX. +1-630-620-9015
MEXICO REPRESENTATIVE OFFICE	KOSMEK USA Mexico Office Av. Santa Fe 103, Int. 59, col. Santa Fe Juriquilla, Queretaro, QRO, 76230, Mexico TEL. +52-442-851-1377
EUROPE SUBSIDIARY	KOSMEK EUROPE GmbH Schleppeplatz 2 9020 Klagenfurt am Wörthersee Austria TEL. +43-463-287587 FAX. +43-463-287587-20
CHINA SUBSIDIARY	KOSMEK (CHINA) LTD. Room601, RIVERSIDE PYRAMID No.55, Lane21, Pusan Rd, Pudong Shanghai 200125, China TEL. +86-21-54253000
INDIA BRANCH OFFICE	KOSMEK LTD. - INDIA 4A/Old No:649, Ground Floor, 4th D cross, MM Layout, Kavalbyrasandra, RT Nagar, Bangalore -560032 India TEL.+91-9880561695
THAILAND REPRESENTATIVE OFFICE	KOSMEK Thailand Representation Office 67 Soi 58, RAMA 9 Rd., Phatthanakan, Suanluang, Bangkok 10250, Thailand TEL. +66-2-300-5132 FAX. +66-2-300-5133



- For Further Information on Unlisted Specifications and Sizes, Please call us.
- Specifications in this Leaflet are Subject to Change without Notice.

