

New **More Safety!**

Clamping Force Verification

model MU□-K

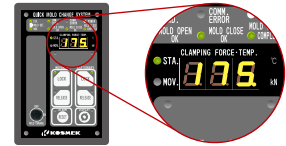
Before Is it difficult to confirm MIMS?

KOSMEK's exclusive MIMS is a highly secure system.

Able to measure an actual mold clamping force.



The calculated value of the clamping force and the previous records can be compared to determine the consistency.



Clamping force displayed on the control panel.



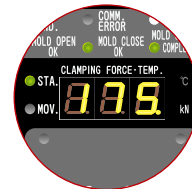
Is this value correct?
Where did I note
the correct value?

Problems

- Since the displayed clamping force alone cannot be used to determine normality, a separate record of the threshold value is required.
- Pass/fail must be determined by an operator.
- Rules can be made, but operators are likely to forget them.

After With Clamping Force Verification

Clamping force registered in advance to determine its normality.



Preparation in Advance

Measure the clamping force with a mold, and register it on the Mold ID.
(Up to 99 Mold IDs can be registered.)

Verification Sequence

Recall and set the Mold ID prior to mold installation.



Mold Installation



An error signal is activated when the clamping force deviates $\pm 10\%$ from the registered value.



Interlock Activated

Ex. When the registered value of mold C01 is 175kN.

Registered Value	Actual Clamping Force	Evaluation
175kN	175kN	➡ Normal
	145kN	➡ Abnormal

It is easy to determine with registered value!



Improvements

- Able to register threshold values in the system
- The system judges the pass-fail criteria based on the recalled threshold values

Watch the Description Video >>>



Product description video of Clamping Force Verification of Magnetic Clamp is available on our website.

https://www.kosmek.co.jp/php_file/video_products.php?id=212&lang=2



**Our specialists will find the best system for you.
Please feel free to contact us.**

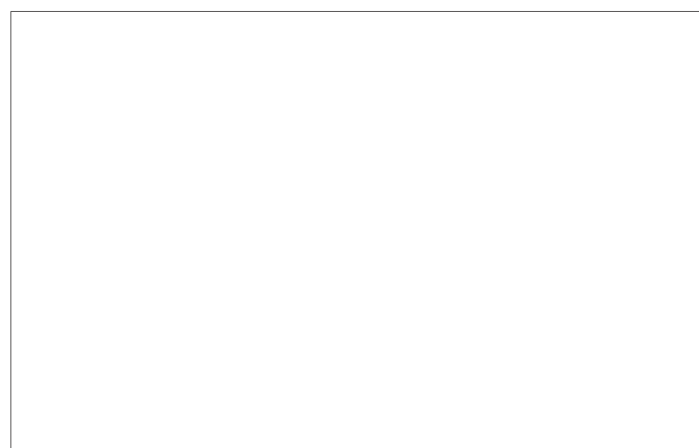


KOSMEK LTD.

► <https://www.kosmek.com/>

HEAD OFFICE 1-5, 2-chome, Murotani, Nishi-ku, Kobe-city, Hyogo, Japan 651-2241
TEL.+81-78-991-5162 FAX.+81-78-991-8787

United States of America SUBSIDIARY	KOSMEK (USA) LTD. 650 Springer Drive, Lombard, IL 60148 USA TEL. +1-630-620-7650 FAX. +1-630-620-9015
MEXICO REPRESENTATIVE OFFICE	KOSMEK USA Mexico Office Av. Santa Fe 103, Int. 59, col. Santa Fe Juriquilla, Queretaro, QRO, 76230, Mexico TEL. +52-442-851-1377
EUROPE SUBSIDIARY	KOSMEK EUROPE GmbH Schleppeplatz 2 9020 Klagenfurt am Wörthersee Austria TEL. +43-463-287587 FAX. +43-463-287587-20
CHINA SUBSIDIARY	KOSMEK (CHINA) LTD. Room601, RIVERSIDE PYRAMID No.55, Lane21, Pusan Rd, Pudong Shanghai 200125, China TEL. +86-21-54253000
INDIA BRANCH OFFICE	KOSMEK LTD. - INDIA 4A/Old No:649, Ground Floor, 4th D cross, MM Layout, Kavalbyrasandra, RT Nagar, Bangalore -560032 India TEL.+91-9880561695
THAILAND REPRESENTATIVE OFFICE	KOSMEK Thailand Representation Office 67 Soi 58, RAMA 9 Rd., Phatthanakan, Suanluang, Bangkok 10250, Thailand TEL. +66-2-300-5132 FAX. +66-2-300-5133



- For Further Information on Unlisted Specifications and Sizes, Please call us.
- Specifications in this Leaflet are Subject to Change without Notice.

