

Manifold Block

Model WHZ-MD

Model LZY-MD

Model LZ-MS

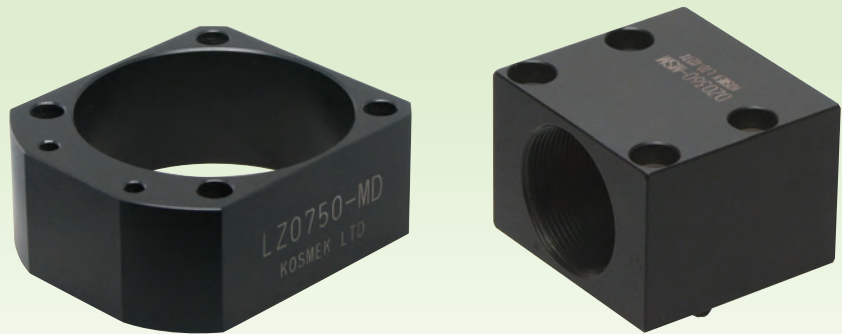
Model LZ-MP

Model TMZ-1MB

Model TMZ-2MB

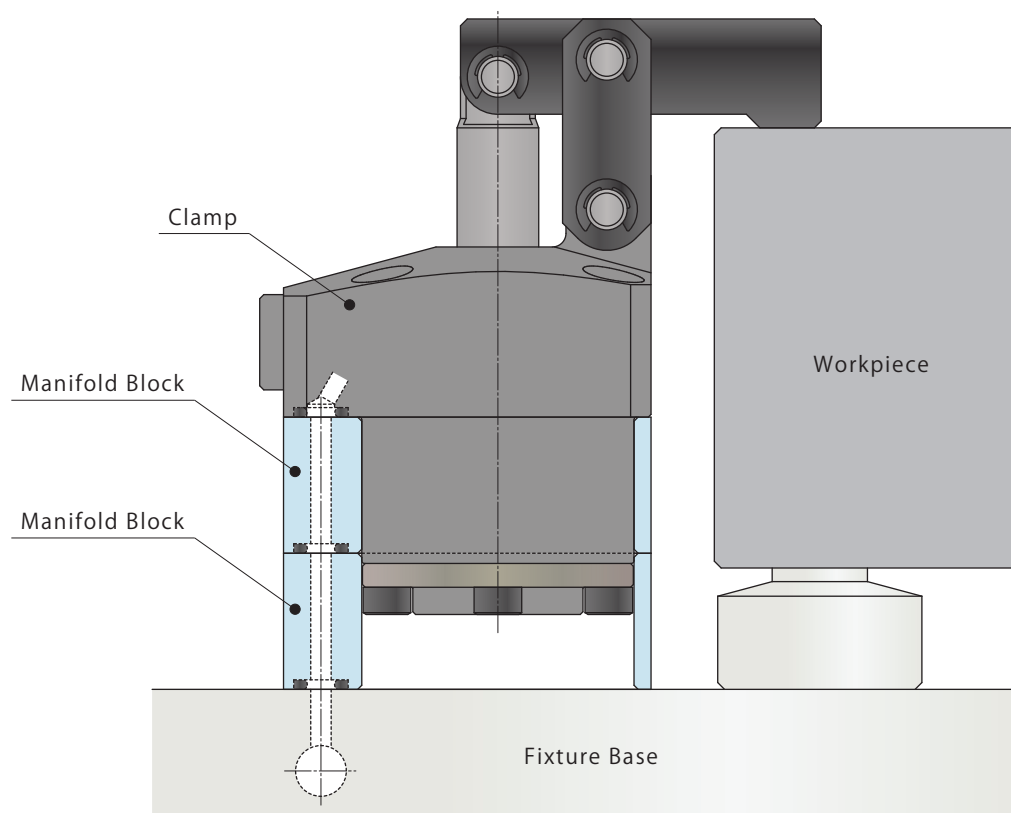
Model DZ-MG ☐

Model DZ-MS ☐



● Manifold Block

The mounting height of clamp is adjustable with the manifold block.



Applicable Model

Manifold Block Model No.	Corresponding Item Model No.			
Model WHZ-MD	Model WCA Model WCE	Model WHA Model WHE		
Model LZY-MD	Model LKA Model LKC	Model LKE Model LHA	Model LHC Model LHE	Model LHS Model LL
Model LZ-MS	Model LJ Model LM	Model LG Model LT		
Model LZ-MP	Model LC	Model TC		
Model TMZ-1MB	Model TMA-1			
Model TMZ-2MB	Model TMA-2			
Model DZ-MG□/MS□	Model DP			

High-Power Series

Pneumatic Series

Hydraulic Series

Valve / Coupler Hydraulic Unit

Manual Operation Accessories

Cautions / Others

Screw Locator

VXF/VXE

Manual Expansion Locating Pin

VX

Manifold Block

WHZ-MD

LZY-MD

LZ-MS

LZ-MP

TMZ-1MB

TMZ-2MB

DZ-M

Manifold Block / Nut

DZ-R

DZ-C

DZ-P

DZ-B

LZ-S

LZ-SQ

WNZ-SQ

TNZ-S

TNZ-SQ

Pressure Switch

JBA

Pressure Gauge

JGA/JGB

Manifold

JX

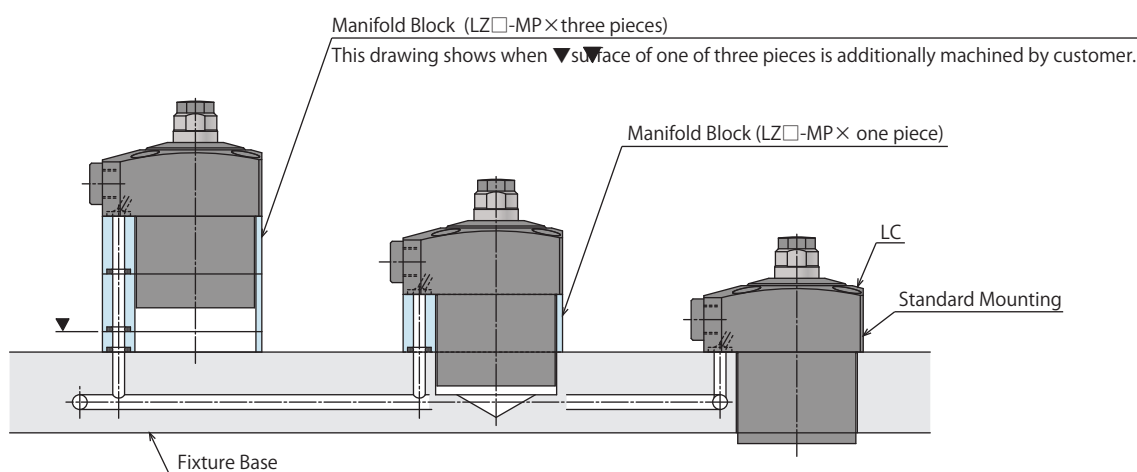
Coupler Switch

PS

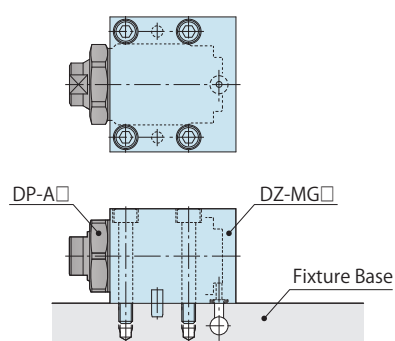
G-Thread Fitting

Application Examples

Work Support (LC) Application Example



Push Cylinder (DP) Application Example

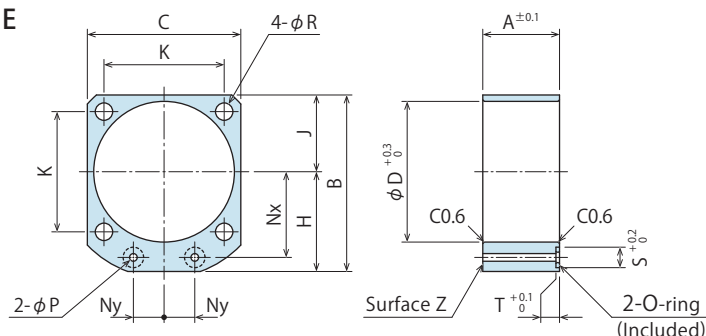


Manifold Block for WCA/WCE/WHA/WHE

Model No. Indication

WHZ 048 0 - MD

Size
(Refer to
following table)

Design No.
(Revision Number)


(mm)

Model No.	WHZ0450-MD	WHZ0600-MD	WHZ0320-MD	WHZ0400-MD	WHZ0500-MD	WHZ0630-MD
Corresponding Model No.	WCE0452 WHE0450	WCE0602 WHE0600	WCA0321 WCE1002 WHA0320 WHE1000	WCA0401 WCE1602 WHA0400 WHE1600	WCA0501 WCE2502 WHA0500 WHE2500	WCA0631 WCE4002 WHA0630 WHE4000
A	20	23	25	27	31	35
B	49	54	60	67	77	88.5
C	40	45	50	58	68	81
D	36	40	46	54	64	77
H	29	31.5	35	38	43	48
J	20	22.5	25	29	34	40.5
K	31.4	34	39	45	53	65
Nx	23.5	26	28	31	36	41
Ny	8	9	10	13	15	20
P	3	3	5	5	5	5
R	4.5	5.5	5.5	5.5	6.5	6.5
S	8	8	10	10	10	10
T	1.4	1.4	1.4	1.4	1.4	1.4
O-ring	1BP5	1BP5	1BP7	1BP7	1BP7	1BP7
Weight kg	0.1	0.1	0.1	0.1	0.2	0.2

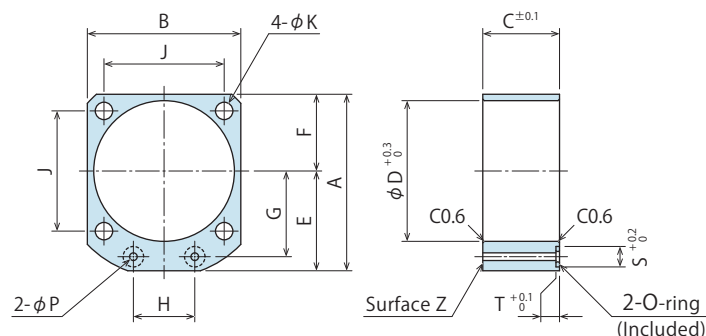
- Notes: 1. Material: A2017BE-T4 Surface Finishing: Zircon Finishing (Zirconium Chemical Conversion Treatment)
2. Mounting bolts are not provided. Prepare mounting bolts according to the mounting height using the dimension A as a reference.
3. For other block thickness (dim. A), machine the surface Z or design a block referring to the drawing and apply surface treatment if necessary.

Manifold Block for LKA/LKC/LKE/LHA/LHC/LHE/LHS/LL

Model No. Indication

LZY 048 0 - MD

Size
(Refer to
following table)

Design No.
(Revision Number)


(mm)

Model No.	LZY0360-MD	LZY0400-MD	LZY0480-MD	LZY0550-MD	LZY0650-MD	LZY0750-MD	LZY0900-MD	LZY1050-MD
Corresponding Model No.	LKA0360 / LKE0360 LHA0360 / LHC0360 LHE0360 / LHS0360 LLO360	LKA0400 / LKC0400 LKE0400 / LHA0400 LHC0400 / LHE0400 LHS0400 / LLO400	LKA0480 / LKC0480 LKE0480 / LHA0480 LHC0480 / LHE0480 LHS0480 / LLO480	LKA0550 / LKC0550 LKE0550 / LHA0550 LHC0550 / LHE0550 LHS0550 / LLO550	LKA0650 / LKC0650 LHA0650 / LHC0650 LHS0650 LLO650	LKA0750 LHA0750 LHS0750 LLO750	LKA0900 LHA0900 LHS0900 LLO900	LKA1050 LHA1050 LHS1050 LLO1050
A	49	54	61	69	81	92	107	122
B	40	45	51	60	70	80	95	110
C	20	20	27	30	32	37	45	50
D	36	40	48	55	65	75	90	105
E	29	31.5	35.5	39	46	52	59.5	67
F	20	22.5	25.5	30	35	40	47.5	55
G	23.5	26	30	33.5	39.5	45	52.5	60
H	16	18	22	24	30	32	37	45
J	31.4	34	40	47	55	63	75	88
K	4.5	5.5	5.5	6.8	6.8	9	11	14
P	3	3	3	3	5	5	5	5
S	8	8	8	8	10	10	10	10
T	1.4	1.4	1.4	1.4	1.4	1.4	1.4	1.4
O-ring	1BP5	1BP5	1BP5	1BP5	1BP7	1BP7	1BP7	1BP7
Weight kg	0.2	0.2	0.3	0.4	0.5	0.8	1.2	1.7

- Notes: 1. Material: S45C Surface Finishing: Alkaline Blackening
2. Mounting bolts are not provided. Prepare mounting bolts according to the mounting height using the dimension C as a reference.
3. For other block thickness (dim. C), machine the surface Z or design a block referring to the drawing and apply surface treatment if necessary.

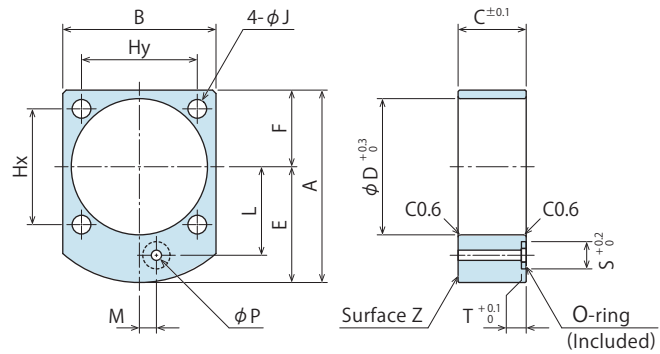
Manifold Block for LJ/LM/LG/LT

Model No. Indication

LZ 048 0 - MS

Size
(Refer to
following table)

Design No.
(Revision Number)



(mm)

Model No.	LZ0300-MS	LZ0360-MS	LZ0400-MS	LZ0480-MS	LZ0550-MS	LZ0650-MS	LZ0750-MS	LZ0900-MS	LZ1050-MS
Corresponding Model No.	LG0301 / LT0301 LJ0302 / LM0300	LG0361 / LT0361 LJ0362 / LM0360	LG0401 / LT0401 LJ0402 / LM0400	LG0481 / LT0481 LJ0482 / LM0480	LG0551 / LT0551 LJ0552 / LM0550	LG0651 / LT0651 LJ0652 / LM0650	LG0751 / LT0751 LJ0752 / LM0750	LG0901 / LT0901 LJ0902	LG1051 / LT1051 LJ1052
A	48	51.5	56.5	62	70	82	93	107	122
B	34	40	45	51	60	70	80	95	110
C	18	20	20	27	30	32	37	45	50
D	30	36	40	48	55	65	75	90	105
E	28.5	31.5	34	36.5	40	47	53	59.5	67
F	19.5	20	22.5	25.5	30	35	40	47.5	55
Hx	30	31.4	34	40	47	55	63	75	88
Hy	23	31.4	34	40	47	55	63	75	88
J	4.5	4.5	5.5	5.5	6.8	6.8	9	11	14
L	20.5	23.5	26	30	33.5	39.5	45	52.5	60
M	3	5	5	0	0	0	0	0	0
P	3	3	3	3	3	5	5	5	5
S	8	8	8	8	8	10	10	10	10
T	1.4	1.4	1.4	1.4	1.4	1.4	1.4	1.4	1.4
O-ring	1BP5	1BP5	1BP5	1BP5	1BP5	1BP7	1BP7	1BP7	1BP7
Weight kg	0.1	0.2	0.2	0.3	0.4	0.5	0.8	1.2	1.7

- Notes: 1. Material: S45C Surface Finishing: Alkaline Blackening
2. Mounting bolts are not provided. Prepare mounting bolts according to the mounting height using the dimension C as a reference.
3. For other block thickness (dim. C), machine the surface Z or design a block referring to the drawing and apply surface treatment if necessary.

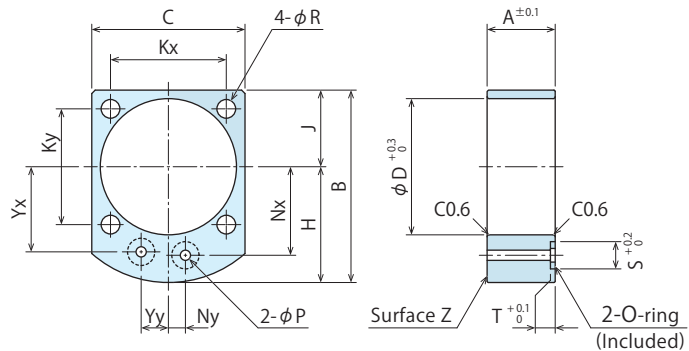
Manifold Block for LC/TC

Model No. Indication

LZ 048 0 - MP

Size
(Refer to
following table)

Design No.
(Revision Number)



(mm)

Model No.	LZ0260-MP	LZ0300-MP	LZ0360-MP	LZ0400-MP	LZ0480-MP	LZ0550-MP	LZ0650-MP	LZ0750-MP	LZ0900-MP
Corresponding Model No.	LC0263	LC0303	LC0363	LC0403 / TC0403	LC0483 / TC0483	LC0553 / TC0553	LC0653 / TC0653	LC0753 / TC0753	LC0903
A	18	18	20	20	27	30	32	37	45
B	43	48	51.5	56.5	62	70	82	93	107
C	29	34	40	45	51	60	70	80	95
D	26	30	36	40	48	55	65	75	90
H	26.5	28.5	31.5	34	36.5	40	47	53	59.5
J	16.5	19.5	20	22.5	25.5	30	35	40	47.5
Kx	25	30	31.4	34	40	47	55	63	75
Ky	21	23	31.4	34	40	47	55	63	75
Nx	18.5	20.5	23.5	26	30	33.5	39.5	45	52.5
Ny	3	3	5	5	0	0	0	0	0
R	3.4	4.5	4.5	5.5	5.5	6.8	6.8	9	11
Yx	18.5	20.5	23.5	26	28	31	37	42.5	50
Yy	7	7	8	8	11	13	14	15	15
P	3	3	3	3	3	3	5	5	5
S	8	8	8	8	8	8	10	10	10
T	1.4	1.4	1.4	1.4	1.4	1.4	1.4	1.4	1.4
O-ring	1BP5	1BP5	1BP5	1BP5	1BP5	1BP5	1BP7	1BP7	1BP7
Weight kg	0.1	0.1	0.2	0.2	0.3	0.4	0.5	0.8	1.2

- Notes: 1. Material: S45C Surface Finishing: Alkaline Blackening
2. Mounting bolts are not provided. Prepare mounting bolts according to the mounting height using the dimension A as a reference.
3. For other block thickness (dim. A), machine the surface Z or design a block referring to the drawing and apply surface treatment if necessary.

High-Power Series
Pneumatic Series
Hydraulic Series
Valve / Coupler Hydraulic Unit
Manual Operation Accessories
Cautions / Others

Screw Locator
VXF/VXE
Manual Expansion Locating Pin
VX
Manifold Block
WHZ-MD
LZY-MD
LZ-MS
LZ-MP
TMZ-1MB
TMZ-2MB
DZ-M

Manifold Block / Nut
DZ-R
DZ-C
DZ-P
DZ-B
LZ-S
LZ-SQ
WNZ-SQ
TNZ-S
TNZ-SQ

Pressure Switch
JBA
Pressure Gauge
JGA/JGB

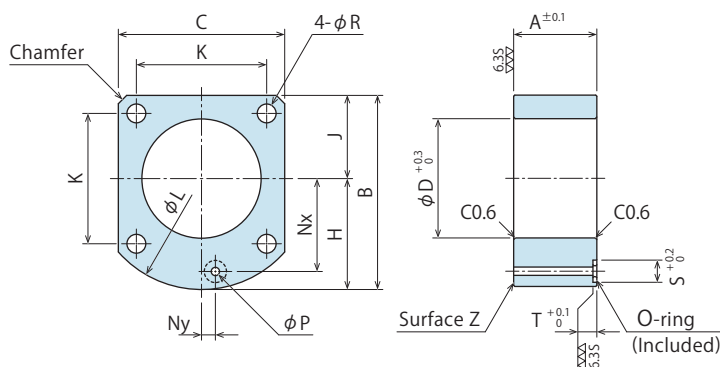
Manifold
JX
Coupler Switch
PS
G-Thread Fitting

Manifold Block for TMA-1

Model No. Indication

TMZ 040 0 - 1MB

Size
(Refer to
following table)

Design No.
(Revision Number)


(mm)

Model No.	TMZ0250-1MB	TMZ0400-1MB	TMZ0600-1MB	TMZ1000-1MB	TMZ1600-1MB	TMZ2500-1MB	TMZ3200-1MB
Corresponding Model No.	TMA0250-1	TMA0400-1	TMA0600-1	TMA1000-1	TMA1600-1	TMA2500-1	TMA3200-1
A	18	21	24	28	35	42	46
B	56.5	62	69	83	95	110	122
C	45	51	60	73	85	100	110
D	33	36	43	48	60	70	85
H	34	36.5	39	46.5	52.5	60	67
J	22.5	25.5	30	36.5	42.5	50	55
K	34	40	47	57	65	75	88
L	68	73	80	97	112	129	147
Nx	26	30	33.5	40	45	52.5	60
Ny	5	0	0	0	0	0	0
R	5.5	5.5	6.8	9	11	14	14
P	3	3	3	3	5	5	5
S	8	8	8	8	10	10	10
T	1.4	1.4	1.4	1.4	1.4	1.4	1.4
Chamfer	3	3	(φ80)	(φ97)	(φ112)	(φ129)	(φ147)
O-ring	1BP5	1BP5	1BP5	1BP5	1BP7	1BP7	1BP7
Weight kg	0.2	0.3	0.5	0.9	1.4	2.2	2.6

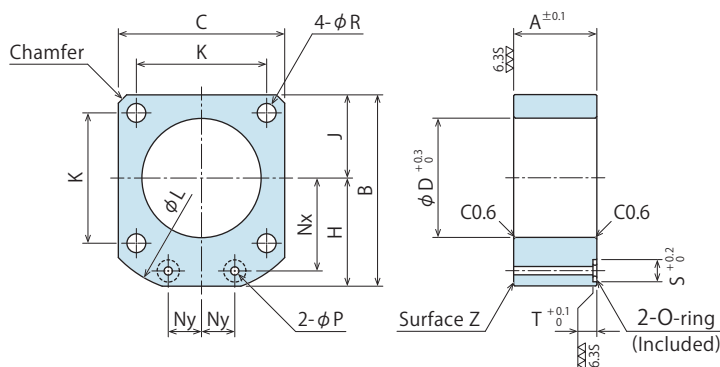
- Notes: 1. Material: S45C Surface Finishing: Alkaline Blackening
2. Mounting bolts are not provided. Prepare mounting bolts according to the mounting height using the dimension A as a reference.
3. For other block thickness (dim. A), machine the surface Z or design a block referring to the drawing and apply surface treatment if necessary.

Manifold Block for TMA-2

Model No. Indication

TMZ 040 0 - 2MB

Size
(Refer to
following table)

Design No.
(Revision Number)


(mm)

Model No.	TMZ0250-2MB	TMZ0400-2MB	TMZ0600-2MB	TMZ1000-2MB	TMZ1600-2MB	TMZ2500-2MB	TMZ3200-2MB
Corresponding Model No.	TMA0250-2	TMA0400-2	TMA0600-2	TMA1000-2	TMA1600-2	TMA2500-2	TMA3200-2
A	15	16	18	20	24	28	32
B	54	61	69	82.5	94.5	109.5	122
C	45	51	60	73	85	100	110
D	33	36	43	48	60	70	85
H	31.5	35.5	39	46	52	59.5	67
J	22.5	25.5	30	36.5	42.5	50	55
K	34	40	47	57	65	75	88
L	68	75	83	100	113	133	147
Nx	26	30	33.5	40	45	52.5	60
Ny	9	10	12	15	16	18.5	20
R	5.5	5.5	6.8	9	11	14	14
P	3	3	3	3	5	5	5
S	8	8	8	8	10	10	10
T	1.4	1.4	1.4	1.4	1.4	1.4	1.4
Chamfer	3	3	3	4	5	8	(φ147)
O-ring	1BP5	1BP5	1BP5	1BP5	1BP7	1BP7	1BP7
Weight kg	0.2	0.3	0.4	0.6	0.9	1.5	1.8

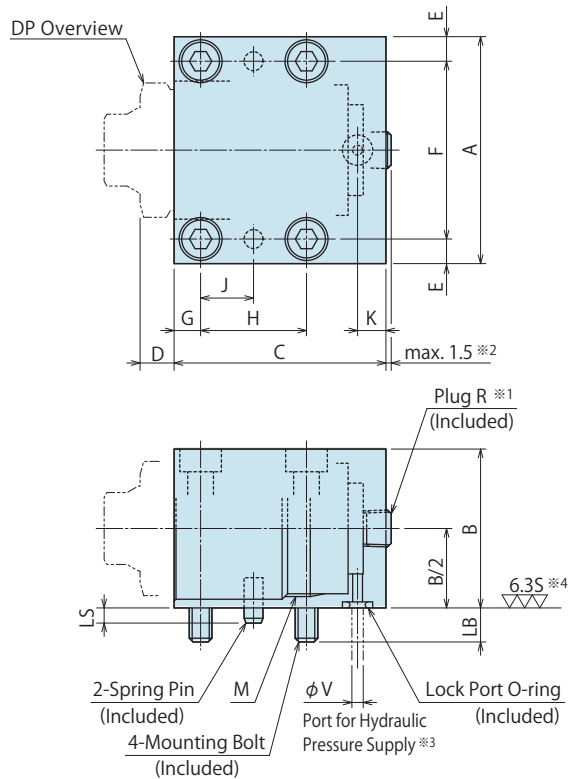
- Notes: 1. Material: S45C Surface Finishing: Alkaline Blackening
2. Mounting bolts are not provided. Prepare mounting bolts according to the mounting height using the dimension A as a reference.
3. For other block thickness (dim. A), machine the surface Z or design a block referring to the drawing and apply surface treatment if necessary.

Manifold Block for DP

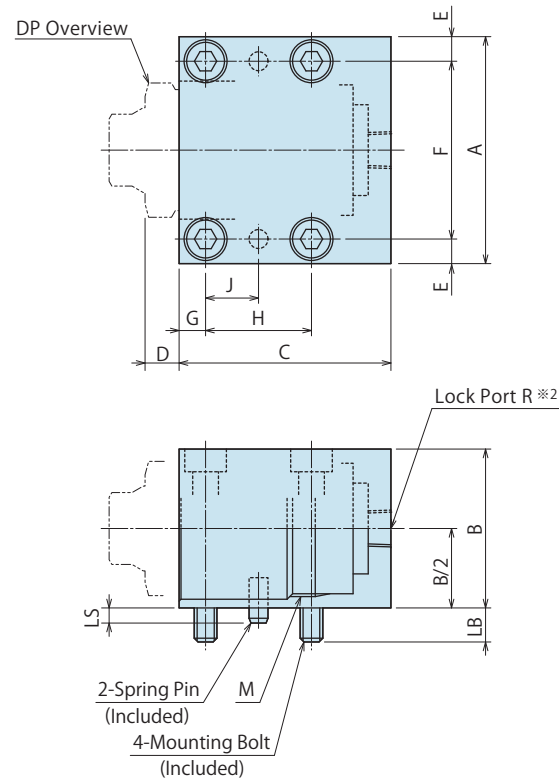
Model No. Indication

DZ 036 0 - M G SSize
(Refer to
following table)Design No.
(Revision Number)Stroke Code
S : For DP□□-□S
M : For DP□□-□M
L : For DP□□-□LPiping Method
G : Gasket Option
S : Piping Option

※The drawing below shows DZ□□0-MG□ (Gasket option).



※The drawing below shows DZ□□0-MS□ (Piping option).



Notes :

1. Material: S45C Surface Finishing: Alkaline Blackening
- ※1. G option: the R-thread plug is screwed in at shipment. There is variance in protrusion amount of the plug.
- ※2. Plug is not included in the S option.
- ※3. Recommended hole size for a hydraulic pressure supply port drilled by Customer.
Make sure there are no burrs around the connection and no cutting chips or other foreign substances inside.
- ※4. The surface touching the O-ring should have a roughness of 6.35.

(mm)

Model No.		DZ0160-MG□			DZ0220-MG□			DZ0240-MG□			DZ0300-MG□			DZ0360-MG□			DZ0450-MG□			DZ0550-MG□			DZ0650-MG□			DZ0800-MG□			
		DZ0160-MS□			DZ0220-MS□			DZ0240-MS□			DZ0300-MS□			DZ0360-MS□			DZ0450-MS□			DZ0550-MS□			DZ0650-MS□			DZ0800-MS□			
Stroke Code		S	M	L	S	M	L	S	M	L	S	M	L	S	M	L	S	M	L	S	M	L	S	M	L	S	M	L	
Corresponding Model No.	Model No.	DP0160-□			DP0221-□			DP0241-□			DP0301-□			DP0361-□			DP0451-□			DP0551-□			DP0651-□			DP0801-□			
	Stroke Code	S	M	L	S	M	L	S	M	L	S	M	L	S	M	L	S	M	L	S	M	L	S	M	L	S	M	L	
A		32			38			45			50			60			75			90			105			120			
B		22			28			32			38			42			52			62			72			88			
C		34	40	49	32.5	38.5	51.5	35	42.5	59	38.5	45.5	65	43	56	77	50	63	85.5	56	69.5	92	65	79	108.5	70	88	119	
D		6			8			8			9			9			13			13			15			15			
E		4.5			4.5			6			6			6.5			8.5			10			11			11			
F		23			29			33			38			47			58			70			83			98			
G		5			5			6			6			7			8			9			11			11			
H		12	18	12	18	12	18	16	22	18	28	20	30	24	36	30	42	34	52	34	52	34	52	34	52	34	52	34	52
J		6	9	6	9	6	9	8	11	9	14	10	15	12	18	15	21	17	26	17	26	17	26	17	26	17	26	17	26
K		7.5			7.5			7.5			7.5			7.5			11.5			11.5			11.5			11.5			
LB		7			6			8			7			9			11			13			15			15			
LS		3			3			3			4			4			4			4			6			7			
M (Nominal × Pitch)		M16×1.5			M22×1.5			M24×1.5			M30×1.5			M36×1.5			M45×1.5			M55×2			M65×2			M80×2			
R		Rc1/8			Rc1/8			Rc1/8			Rc1/8			Rc1/8			Rc1/4			Rc1/4			Rc1/4			Rc1/4			
Mounting Bolt		M4×0.7×25			M4×0.7×30			M5×0.8×35			M5×0.8×40			M6×45			M8×55			M10×65			M12×75			M12×90			
O-ring		1BP5			1BP5			1BP5			1BP5			1BP5			1BP7			1BP7			1BP7			1BP7			
Spring Pin		φ3×8			φ3×8			φ3×8			φ5×12			φ5×12			φ6×12			φ6×12			φ8×16			φ10×20			
V		3			3			3			5			5			5			5			5			5			
Weight		kg	0.15	0.15	0.2	0.2	0.2	0.3	0.3	0.4	0.5	0.4	0.5	0.6	0.6	0.7	1	1	1.2	1.7	1.5	1.8	2.5	2.2	2.8	3.8	3.2	4	5.5

High-Power
Series

Pneumatic Series

Hydraulic Series

Valve / Coupler
Hydraulic UnitManual Operation
Accessories

Cautions / Others

Screw
Locator

VXF/VXE

Manual Expansion
Locating Pin

VX

Manifold Block

WHZ-MD

LZY-MD

LZ-MS

LZ-MP

TMZ-1MB

TMZ-2MB

DZ-M

Manifold Block /
Nut

DZ-R

DZ-C

DZ-P

DZ-B

LZ-S

LZ-SQ

WNZ-SQ

TNZ-S

TNZ-SQ

Pressure Switch

JBA

Pressure Gauge

JGA/JGB

Manifold

JX

Coupler Switch

PS

G-Thread Fitting

Manifold Block / Nut

Model **DZ-R**

Model **DZ-C**

Model **DZ-P**

Model **DZ-B**

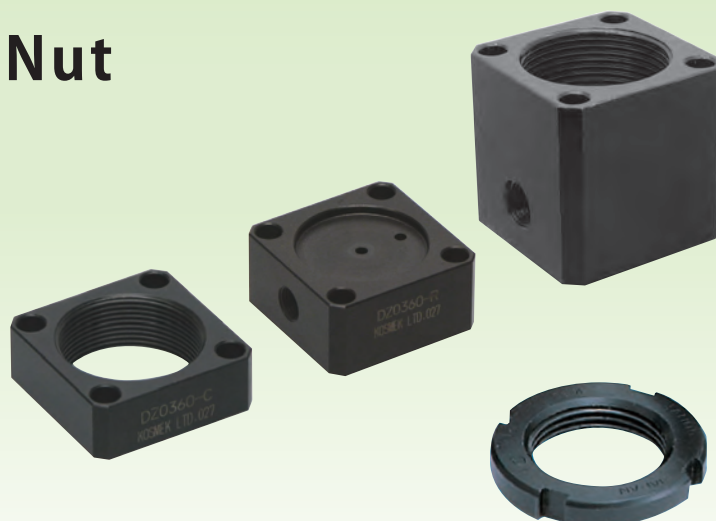
Model **LZ-S**

Model **LZ-SQ**

Model **WNZ-SQ**

Model **TNZ-S**

Model **TNZ-SQ**

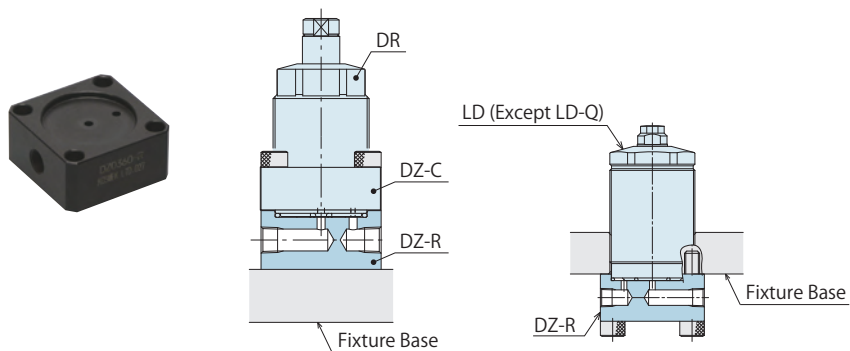


Applicable Model/Application Examples

Model **DZ-R**

**Manifold Block for
DR/LD/WNC**

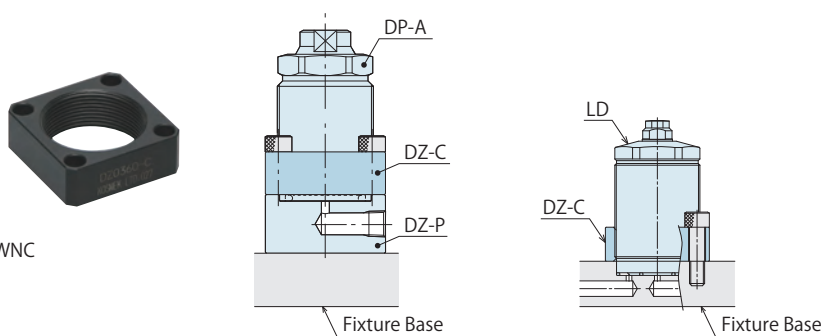
Corresponding Model: DR / LD / WNC



Model **DZ-C**

**Flanged Nut for
DP/DR/DS/DT/LD/WNC**

Corresponding Model: DP / DR / DS / DT / LD / WNC

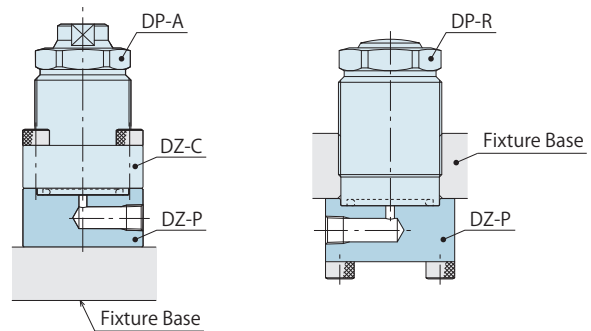
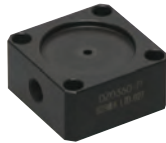


Applicable Model/Application Examples

Model **DZ-P**

Manifold Block for DP

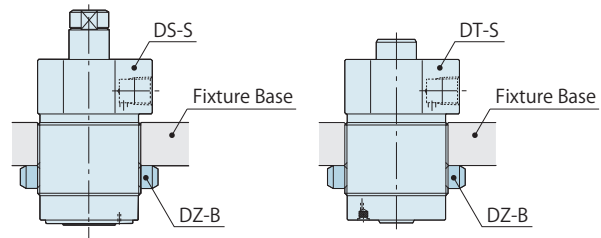
Corresponding Model: DP



Model **DZ-B**

Bulkhead Nut for DP/DR/DS/DT

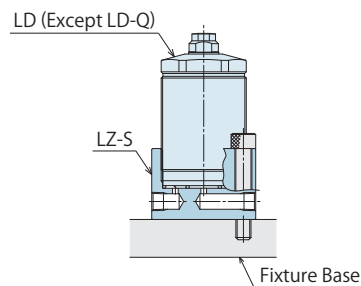
Corresponding Model: DP / DR / DS / DT



Model **LZ-S**

Manifold Block for LD/WNC

Corresponding Model: LD / WNC



Model **TNZ-S**

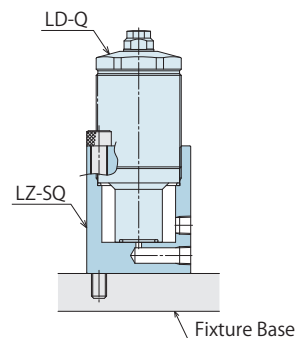
Manifold Block for TNC

Corresponding Model: TNC

Model **LZ-SQ**

Manifold Block for LD-Q

Corresponding Model: LD-Q



Model **WNC-SQ**

Manifold Block for WNC-Q

Corresponding Model: WNC-Q

Model **TNZ-SQ**

Manifold Block for TNC-Q

Corresponding Model: TNC-Q

High-Power Series

Pneumatic Series

Hydraulic Series

Valve / Coupler Hydraulic Unit

Manual Operation Accessories

Cautions / Others

Screw Locator

VXF/VXE

Manual Expansion Locating Pin

VX

Manifold Block

WHZ-MD

LZY-MD

LZ-MS

LZ-MP

TMZ-1MB

TMZ-2MB

DZ-M

Manifold Block / Nut

DZ-R

DZ-C

DZ-P

DZ-B

LZ-S

LZ-SQ

WNC-SQ

TNZ-S

TNZ-SQ

Pressure Switch

JBA

Pressure Gauge

JGA/JGB

Manifold

JX

Coupler Switch

PS

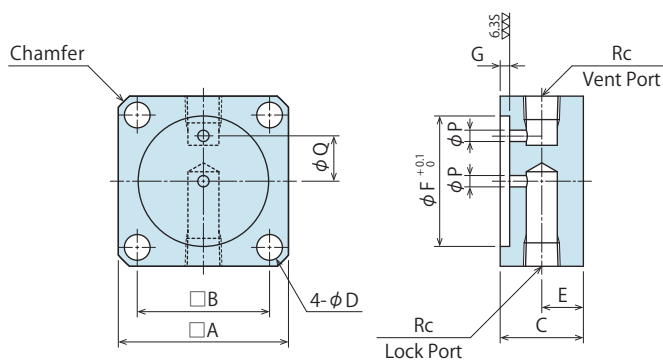
G-Thread Fitting

Manifold Block for DR/LD/WNC

Model No. Indication

DZ 036 0 - R

 Size
(Refer to
following table)

 Design No.
(Revision Number)


(mm)

Model No.	DZ0220-R	DZ0240-R	DZ0260-R	DZ0300-R	DZ0360-R	DZ0450-R	DZ0550-R	DZ0600-R	DZ0650-R	DZ0800-R
Corresponding Model No.	DR0221 LD0222※1 WNC0350	DR0241 - -	- LD0262※1 WNC0600	DR0301 LD0302※1 WNC1000	DR0361 LD0362※1 WNC1600	DR0451 LD0452※1 WNC3000	DR0551 - -	- - WNC6000	DR0651 - -	DR0801 - -
A	28	32	35	38	45	55	70	75	80	90
B	21	23	26	29	35	42	54	59	62	72
C	19	19	19	22	22	25	25	25	25	28
D	4.5	5.5	5.5	5.5	6.8	9	11	11	14	14
E	9.5	9.5	9.5	11	11	12.5	12.5	12.5	12.5	14
F	20.5	22.5	24.5	28.5	34.5	43.5	53	58	63	78
G	2.5	2.5	2.5	2.5	2.5	3.5	3.5	3.5	3.5	4
P	2	3	2.5	3	3	5	5	5	5	5
Q	7	7.5	9.5	10	12.5	15	19	24	24	30
Rc	Rc1/8	Rc1/8	Rc1/8	Rc1/8	Rc1/8	Rc1/4	Rc1/4	Rc1/4	Rc1/4	Rc1/4
Chamfer	C2	C3	C3	C3	C3	C4	C5	C4	C5.5	C5.5
Weight kg	0.1	0.2	0.2	0.2	0.3	0.6	0.8	0.9	1.0	1.5

Notes: 1. Material:S45C

Surface Finishing: Alkaline Blackening

2. Mounting bolts are not provided. Prepare mounting bolts according to the mounting height using the dimension C as a reference.

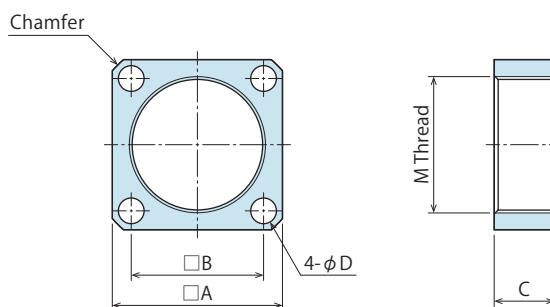
※1. It is not applicable for LD-Q: Work Support Hydraulic Advance Long Stroke Option. (Please select from LZ-SQ.)

Flange Nut for DP/DR/DS/DT/LD/WNC

Model No. Indication

DZ 036 0 - C

 Size
(Refer to
following table)

 Design No.
(Revision Number)


(mm)

Model No.	DZ0160-C	DZ0220-C	DZ0240-C	DZ0260-C	DZ0300-C	DZ0360-C	DZ0450-C	DZ0550-C	DZ0600-C	DZ0650-C	DZ0800-C
Corresponding Model No.	DP0160	DP0221	DP0241	-	DP0301	DP0361	DP0451	DP0551	-	DP0651	DP0801
	-	DR0221	DR0241	-	DR0301	DR0361	DR0451	DR0551	-	DR0651	DR0801
	-	DS0221	DS0241	-	DS0301	DS0361	DS0451	DS0551	-	DS0651	DS0801
	-	-	-	-	-	DT0361	DT0451	DT0551	-	DT0651	DT0801
	-	LD0222	-	LD0262	LD0302	LD0362	LD0452	-	-	-	-
	-	WNC0350	-	WNC0600	WNC1000	WNC1600	WNC3000	-	WNC6000	-	-
A	25	28	32	35	38	45	55	70	75	80	90
B	18	21	23	26	29	35	42	54	59	62	72
C	12	14	14	14	15	16	18	20	22	25	25
D	4.5	4.5	5.5	5.5	5.5	6.8	9	11	11	14	14
M (Nominal×Pitch)	M16×1.5	M22×1.5	M24×1.5	M26×1.5	M30×1.5	M36×1.5	M45×1.5	M55×2	M60×2	M65×2	M80×2
Chamfer	C2	C2	C3	C3	C3	C3	C4	C5	C4	C5.5	C5.5
Weight kg	0.04	0.04	0.06	0.07	0.08	0.1	0.2	0.4	0.45	0.5	0.6

Notes: 1. Material:S45C

Surface Finishing: Alkaline Blackening

2. Mounting bolts are not provided. Prepare mounting bolts according to the mounting height using the dimension C as a reference.

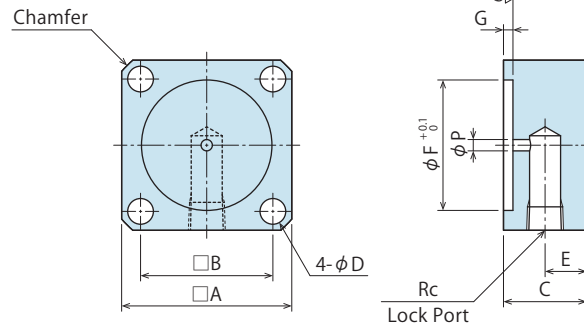
Manifold Block for DP

Model No. Indication

DZ 036 0 - P

Size
(Refer to
following table)

Design No.
(Revision Number)



Model No.	DZ0160-P	DZ0220-P	DZ0240-P	DZ0300-P	DZ0360-P	DZ0450-P	DZ0550-P	DZ0650-P	DZ0800-P
Corresponding Model No.	DP0160	DP0221	DP0241	DP0301	DP0361	DP0451	DP0551	DP0651	DP0801
A	25	28	32	38	45	55	70	80	90
B	18	21	23	29	35	42	54	62	72
C	19	19	19	22	22	25	25	25	28
D	4.5	4.5	5.5	5.5	6.8	9	11	14	14
E	9.5	9.5	9.5	11	11	12.5	12.5	12.5	14
F	14.5	20.5	22.5	28.5	34.5	43.5	53	63	78
G	1.5	2.5	2.5	2.5	2.5	3.5	3.5	3.5	4
P	3	3	3	3	3	5	5	5	5
Rc	Rc1/8	Rc1/8	Rc1/8	Rc1/8	Rc1/8	Rc1/4	Rc1/4	Rc1/4	Rc1/4
Chamfer	C2	C2	C3	C3	C3	C4	C5	C5.5	C5.5
Weight kg	0.1	0.1	0.2	0.2	0.3	0.6	0.8	1.0	1.5

- Notes : 1. Material : S45C Surface Finishing : Alkaline Blackening
2. Mounting bolts are not provided. Prepare mounting bolts according to the mounting height using the dimension C as a reference.

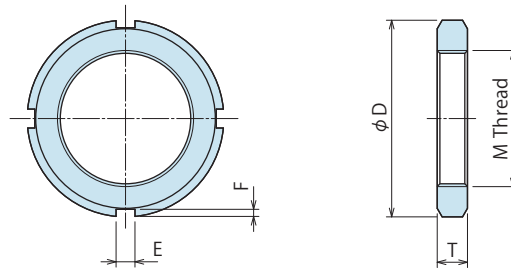
Bulkhead Nut for DP/DR/DS/DT

Model No. Indication

DZ 036 0 - B

Size
(Refer to
following table)

Design No.
(Revision Number)



Model No.	DZ0160-B	DZ0220-B	DZ0240-B	DZ0300-B	DZ0360-B	DZ0450-B	DZ0550-B	DZ0650-B	DZ0800-B
Corresponding Model No.	DP0160	DP0221	DP0241	DP0301	DP0361	DP0451	DP0551	DP0651	DP0801
	-	DR0221	DR0241	DR0301	DR0361	DR0451	DR0551	DR0651	DR0801
	-	DS0221	DS0241	DS0301	DS0361	DS0451	DS0551	DS0651	DS0801
	-	-	-	-	DT0361	DT0451	DT0551	DT0651	DT0801
D	25	32	38	45	52	65	75	85	105
E	4	5	5	5	5	6	7	7	8
F	2	2	2	2	2	2.5	3	3	3.5
M (Nominal×Pitch)	M16×1.5	M22×1.5	M24×1.5	M30×1.5	M36×1.5	M45×1.5	M55×2	M65×2	M80×2
T	5	6	7	7	8	10	11	12	15
Weight kg	0.02	0.03	0.03	0.05	0.08	0.1	0.2	0.3	0.5

- Note : 1. Material : S45C Surface Finishing : Alkaline Blackening

High-Power Series
Pneumatic Series
Hydraulic Series
Valve / Coupler Hydraulic Unit
Manual Operation Accessories
Cautions / Others

Screw Locator
VXF/VXE
Manual Expansion Locating Pin
VX
Manifold Block
WHZ-MD
LZY-MD
LZ-MS
LZ-MP
TMZ-1MB
TMZ-2MB
DZ-M

Manifold Block / Nut
DZ-R
DZ-C
DZ-P
DZ-B
LZ-S
LZ-SQ
WNZ-SQ
TNZ-S
TNZ-SQ

Pressure Switch
JBA

Pressure Gauge
JGA/JGB

Manifold
JX

Coupler Switch
PS

G-Thread Fitting

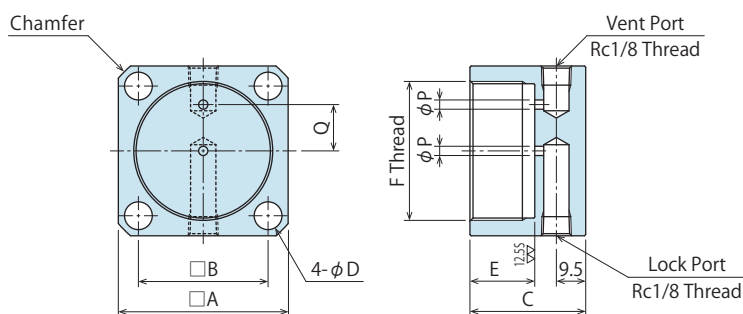
Manifold Block for LD/WNC

Model No. Indication

LZ 036 0 - S

Size
(Refer to following table)

Design No.
(Revision Number)



(mm)

Model No.	LZ0220-S	LZ0260-S	LZ0300-S	LZ0360-S	LZ0450-S	LZ0600-S
Corresponding Model No.	LD0222(Except -Q) ^{※1} WNC0350(Except -Q) ^{※2}	LD0262(Except -Q) ^{※1} WNC0600(Except -Q) ^{※2}	LD0302(Except -Q) ^{※1} WNC1000(Except -Q) ^{※2}	LD0362(Except -Q) ^{※1} WNC1600(Except -Q) ^{※2}	LD0452(Except -Q) ^{※1} WNC3000(Except -Q) ^{※2}	- WNC6000(Except -Q) ^{※2}
A	28	35	38	45	55	75
B	21	26	29	35	42	59
C	30.5	32.5	33.5	34.5	37.5	41.5
D	4.5	5.5	5.5	6.8	9	11
E	14	16	17	18	21	25
F (Nominal × Pitch)	M22×1.5	M26×1.5	M30×1.5	M36×1.5	M45×1.5	M60×2
P	2	2.5	3	3	3	3
Q	7	9.5	11	13	15	24
Chamfer	C2	C3	C3	C3	C4	C4
Weight kg	0.12	0.20	0.24	0.34	0.52	1.12

Notes: 1. Material: S45C Surface Finishing: Alkaline Blackening
2. Mounting bolts are not provided. Prepare mounting bolts according to the mounting height using the dimension C as a reference.
※1. It is not applicable for LD-Q: Work Support Hydraulic Advance Long Stroke Option. (Please select from LZ-SQ.)
※2. It is not applicable for WNC-Q: High-Power Pneumatic Work Support Pneumatic Advance Long Stroke Option. (Please select from WNZ-SQ.)

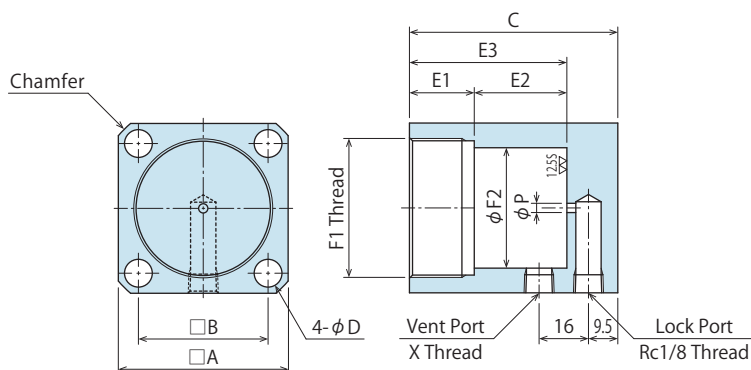
Manifold Block for LD-Q

Model No. Indication

LZ 036 0 - SQ

Size
(Refer to following table)

Design No.
(Revision Number)



(mm)

Model No.	LZ0220-SQ	LZ0260-SQ	LZ0300-SQ	LZ0360-SQ	LZ0450-SQ
Corresponding Model No.	LD0222-Q ^{※2}	LD0262-Q ^{※2}	LD0302-Q ^{※2}	LD0362-Q ^{※2}	LD0452-Q ^{※2}
A	28	35	38	45	55
B	21	26	29	35	42
C	50	49.5	53	60.5	67.5
D	4.5	5.5	5.5	6.8	9
E1	14	16	17	18	21
E2	19.5	17	19.5	26	30
E3	33.5	33	36.5	44	51
F1 (Nominal × Pitch)	M22×1.5	M26×1.5	M30×1.5	M36×1.5	M45×1.5
F2	16	20	24	30	39
P	3	3	3	3	3
X Thread	M5×0.8	Rc1/8	Rc1/8	Rc1/8	Rc1/8
Chamfer	C2	C3	C3	C3	C4
Weight kg	0.21	0.31	0.38	0.58	0.89

Notes: 1. Material: S45C Surface Finishing: Alkaline Blackening
2. Mounting bolts are not provided. Prepare mounting bolts according to the mounting height using the dimension C as a reference.
※2. It is not applicable for LD-EQ: Work Support Spring Advance Long Stroke Option. (Please select from LZ-S.)

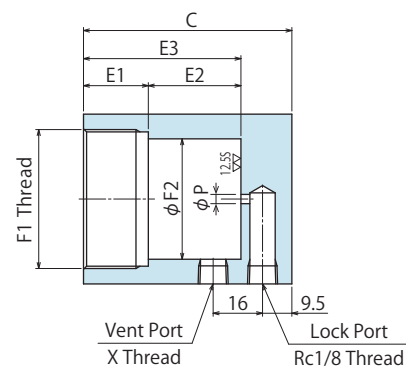
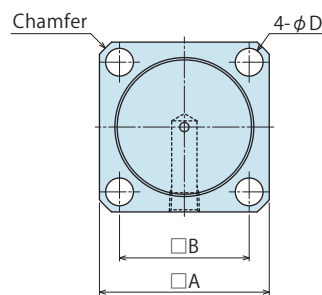
Manifold Block for WNC-Q

Model No. Indication

WNZ 035 0 - SQ

Size
(Refer to
following table)

Design No.
(Revision Number)



(mm)

Model No.	WNZ0350-SQ	WNZ0600-SQ	WNZ1000-SQ	WNZ1600-SQ	WNZ3000-SQ	WNZ6000-SQ
Corresponding Model No.	WNC0350-Q	WNC0600-Q	WNC1000-Q	WNC1600-Q	WNC3000-Q	WNC6000-Q
A	28	35	38	45	55	75
B	21	26	29	35	42	59
C	49	51	52	56	59	68
D	4.5	5.5	5.5	6.8	9	11
E1	14	16	17	18	21	25
E2	18.5	18.5	18.5	21.5	21.5	26.5
E3	32.5	34.5	35.5	39.5	42.5	51.5
F1 (Nominal×Pitch)	M22×1.5	M26×1.5	M30×1.5	M36×1.5	M45×1.5	M60×2
F2	16	20	24	30	39	53
P	3	3	3	3	3	3
X Thread	M5×0.8	Rc1/8	Rc1/8	Rc1/8	Rc1/8	Rc1/8
Chamfer	C2	C3	C3	C3	C4	C4
Weight kg	0.20	0.32	0.37	0.55	0.79	1.75

Notes : 1. Material : S45C Surface Finishing : Alkaline Blackening

2. Mounting bolts are not provided. Prepare mounting bolts according to the mounting height using the dimension C as a reference.

High-Power
Series

Pneumatic Series

Hydraulic Series

Valve / Coupler
Hydraulic Unit

Manual Operation
Accessories

Cautions / Others

Screw
Locator

VXF/VXE

Manual Expansion
Locating Pin

VX

Manifold Block

WHZ-MD

LZY-MD

LZ-MS

LZ-MP

TMZ-1MB

TMZ-2MB

DZ-M

Manifold Block /
Nut

DZ-R

DZ-C

DZ-P

DZ-B

LZ-S

LZ-SQ

WNZ-SQ

TNZ-S

TNZ-SQ

Pressure Switch

JBA

Pressure Gauge

JGA/JGB

Manifold

JX

Coupler Switch

PS

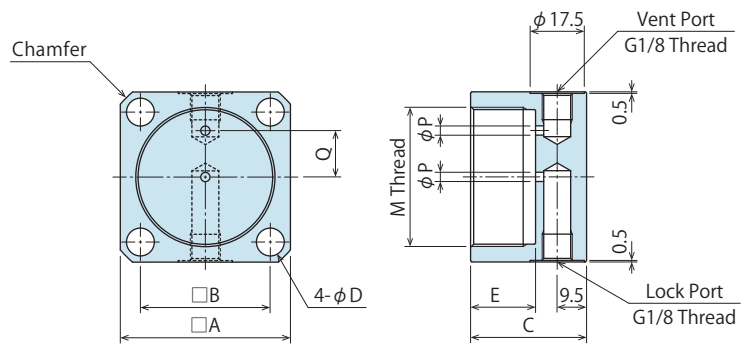
G-Thread Fitting

Manifold Block for TNC

Model No. Indication

TNZ 060 0 - S

Size
(Refer to
following table)

Design No.
(Revision Number)


(mm)

Model No.	TNZ0400-S	TNZ0600-S	TNZ1000-S	TNZ1600-S
Corresponding Model No.	TNC0403 (Except -Q) ^{※3}	TNC0603 (Except -Q) ^{※3}	TNC1003 (Except -Q) ^{※3}	TNC1603 (Except -Q) ^{※3}
A	35	38	45	55
B	26	29	35	42
C	32.5	33.5	34.5	37.5
D	5.5	5.5	6.8	9
E	16	17	18	21
M (Nominal×Pitch)	M26×1.5	M30×1.5	M36×1.5	M45×1.5
P	2.5	3	3	3
Q	9.5	11	13	15
Chamfer	C3	C3	C3	C4
Weight kg	0.20	0.23	0.34	0.52

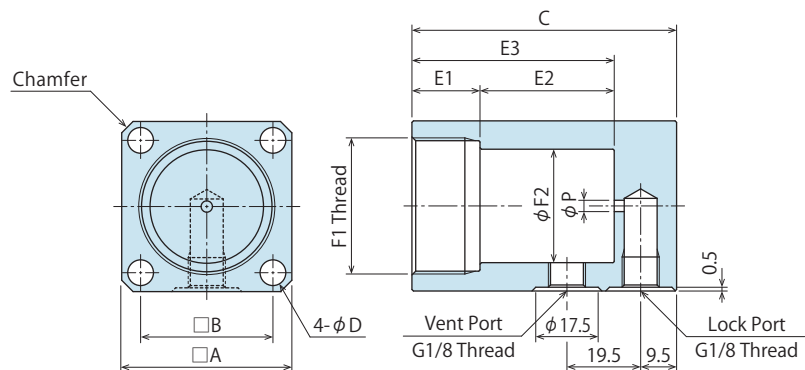
- Notes: 1. Material: S45C Surface Finishing: Alkaline Blackening
2. Mounting bolts are not provided. Prepare mounting bolts according to the mounting height using the dimension C as a reference.
^{※3} It is not applicable for TNC-Q: Work Support Hydraulic Advance Long Stroke Option. (Please select from TNZ-SQ.)

Manifold Block for TNC-Q

Model No. Indication

TNZ 060 0 - SQ

Size
(Refer to
following table)

Design No.
(Revision Number)


(mm)

Model No.	TNZ0400-SQ	TNZ0600-SQ	TNZ1000-SQ	TNZ1600-SQ
Corresponding Model No.	TNC0403-Q	TNC0603-Q	TNC1003-Q	TNC1603-Q
A	35	38	45	55
B	26	29	35	42
C	56	63.5	70	86.5
D	5.5	5.5	6.8	9
E1	16	17	18	21
E2	23.5	30	35.5	49
E3	39.5	47	53.5	70
F1 (Nominal×Pitch)	M26×1.5	M30×1.5	M36×1.5	M45×1.5
F2	20	24	30	39
P	2.5	3	3	3
Chamfer	C3	C3	C3	C4
Weight kg	0.36	0.46	0.68	1.16

- Notes: 1. Material: S45C Surface Finishing: Alkaline Blackening
2. Mounting bolts are not provided. Prepare mounting bolts according to the mounting height using the dimension C as a reference.

MEMO

High-Power Series
Pneumatic Series
Hydraulic Series
Valve / Coupler Hydraulic Unit
Manual Operation Accessories
Cautions / Others

Screw Locator

VXF/VXE

Manual Expansion Locating Pin

VX

Manifold Block

WHZ-MD

LZY-MD

LZ-MS

LZ-MP

TMZ-1MB

TMZ-2MB

DZ-M

Manifold Block / Nut

DZ-R

DZ-C

DZ-P

DZ-B

LZ-S

LZ-SQ

WNZ-SQ

TNZ-S

TNZ-SQ

Pressure Switch

JBA

Pressure Gauge

JGA/JGB

Manifold

JX

Coupler Switch

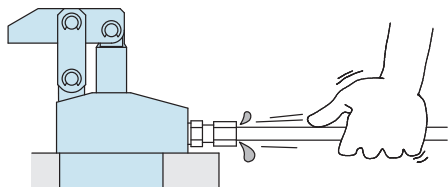
PS

G-Thread Fitting

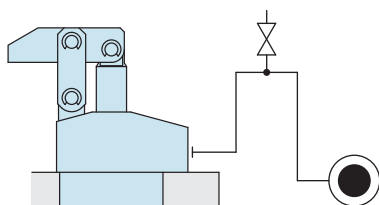
Cautions

● Installation Notes (For Hydraulic Series)

- 1) Check the Usable Fluid
 - Please use the appropriate fluid by referring to the Hydraulic Fluid List.
- 2) Procedure before Piping
 - The pipeline, piping connector and fixture circuits should be cleaned by thorough flushing.
 - The dust and cutting chips in the circuit may lead to fluid leakage and malfunction.
 - There is no filter provided with Kosmek's product except for a part of valves which prevents foreign materials and contaminants from getting into the circuit.
- 3) Applying Sealing Tape
 - Wrap with tape 1 to 2 times following the screw direction.
 - Pieces of the sealing tape can lead to oil leakage and malfunction.
 - Please implement piping construction in a clear environment to prevent anything getting in products.
- 4) Air Bleeding of the Hydraulic Circuit
 - If the hydraulic circuit has excessive air, the action time may become very long. If air enters the circuit after connecting the hydraulic port or under the condition of no air in the oil tank, please perform the following steps.
 - ① Reduce hydraulic pressure to less than 2MPa.
 - ② Loosen the cap nut of pipe fitting closest to the clamp by one full turn.
 - ③ Shake the pipeline to loosen the outlet of pipe fitting.
Hydraulic fluid mixed with air comes out.



- ④ Tighten the cap nut after bleeding.
- ⑤ It is more effective to release air at the highest point inside the circuit or at the end of the circuit.
(Set an air bleeding valve at the highest point inside the circuit.)



5) Checking Looseness and Retightening

- At the beginning of the machine installation, the bolt and nut may be tightened lightly. Check the looseness and re-tighten as required.

● Hydraulic Fluid List

ISO Viscosity Grade ISO-VG-32		
Maker	Anti-Wear Hydraulic Oil	Multi-Purpose Hydraulic Oil
Showa Shell Sekiyu	Tellus S2 M 32	Morlina S2 B 32
Idemitsu Kosan	Daphne Hydraulic Fluid 32	Daphne Super Multi Oil 32
JX Nippon Oil & Energy	Super Hyrando 32	Super Mulpus DX 32
Cosmo Oil	Cosmo Hydro AW32	Cosmo New Mighty Super 32
ExxonMobil	Mobil DTE 24	Mobil DTE 24 Light
Matsumura Oil	Hydol AW-32	
Castrol	Hyspin AWS 32	

Note : Please contact manufacturers when customers require products in the list above.

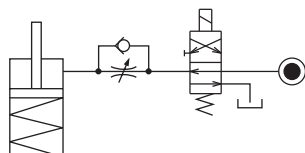
● Notes on Hydraulic Cylinder Speed Control Unit



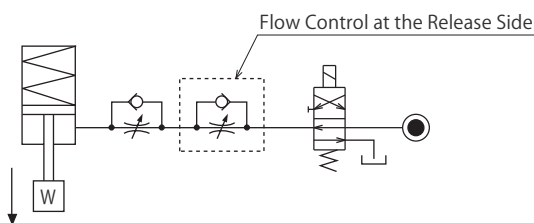
Please pay attention to the cautions below. Design the hydraulic circuit for controlling the action speed of hydraulic cylinder. Improper circuit design may lead to malfunctions and damages. Please review the circuit design in advance.

● Flow Control Circuit for Single Acting Cylinder

For spring return single acting cylinders, restricting flow during release can extremely slow down or disrupt release action. The preferred method is to control the flow during the lock action using a valve that has free-flow in the release direction. It is also preferred to provide a flow control valve at each actuator.



Accelerated clamping speed by excessive hydraulic flow to the cylinder may sustain damage. In this case add flow control to regulate flow. (Please add flow control to release flow if the lever weight is put on at the time of release action when using swing clamps.)



● Flow Control Circuit for Double Acting Cylinder

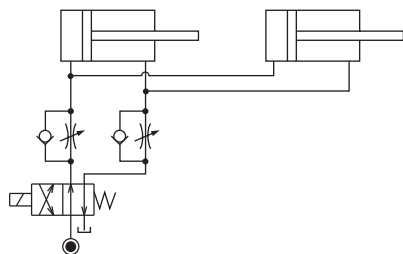
Flow control circuit for double acting cylinder should have meter-out circuits for both the lock and release sides. Meter-in control can have adverse effect by presence of air in the system.

However, in the case of controlling LKE, TMA, TLA, both lock side and release side should be meter-in circuit.

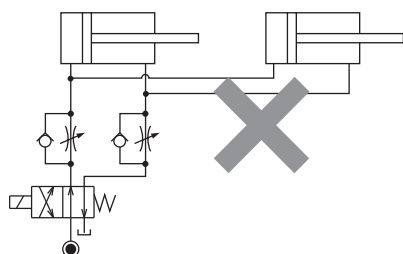
Refer to P.75 for speed adjustment of LKE.

For TMA and TLA, if meter-out circuit is used, abnormal high pressure is created, which causes oil leakage and damage.

【Meter-out Circuit】 (Except LKE/TMA/TLA)

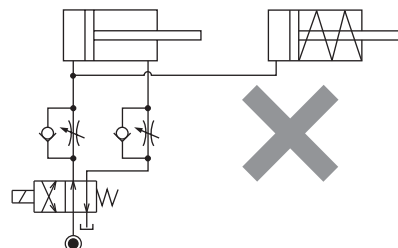


【Meter-in Circuit】 (LKE/TMA/TLA must be controlled with meter-in.)



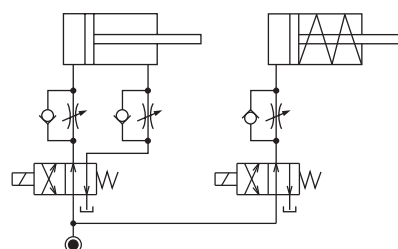
In the case of meter-out circuit, the hydraulic circuit should be designed with the following points.

- ① Single acting components should not be used in the same flow control circuit as the double acting components. The release action of the single acting cylinders may become erratic or very slow.

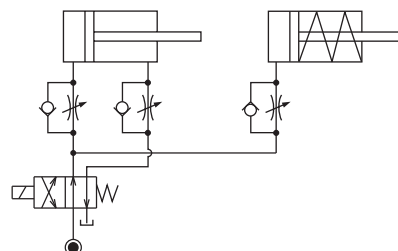


Refer to the following circuit when both the single acting cylinder and double acting cylinder are used together.

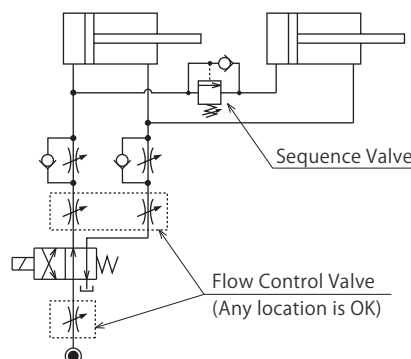
- Separate the control circuit.



- Reduce the influence of double acting cylinder control unit. However, due to the back pressure in tank line, single action cylinder is activated after double action cylinder works.



- ② In the case of meter-out circuit, the inner circuit pressure may increase during the cylinder action because of the fluid supply. The increase of the inner circuit pressure can be prevented by reducing the supplied fluid beforehand via the flow control valve. Especially when using sequence valve or pressure switches for clamping detection. If the back pressure is more than the set pressure then the system will not work as it is designed to.



High-Power
Series

Pneumatic Series

Hydraulic Series

Valve / Coupler
Hydraulic Unit

Manual Operation
Accessories

Cautions / Others

Cautions

Installation Notes
(For Hydraulic Series)

Hydraulic Fluid List

Notes on Hydraulic Cylinder
Speed Control Circuit

Notes on Handling

Maintenance/
Inspection

Warranty

Company Profile

Company Profile

Our Products

History

Index

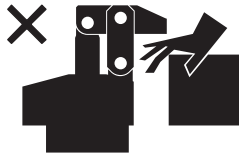
Search by
Alphabetical Order

Sales Offices

● Cautions

● Notes on Handling

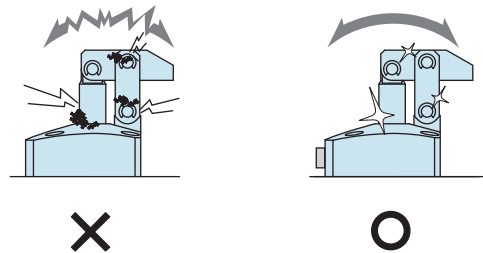
- 1) It should be operated by qualified personnel.
- The hydraulic machine and air compressor should be operated and maintained by qualified personnel.
- 2) Do not operate or remove the product unless the safety protocols are ensured.
 - ① The machine and equipment can only be inspected or prepared when it is confirmed that the safety devices are in place.
 - ② Before the product is removed, make sure that the above-mentioned safety devices are in place. Shut off the pressure and power source, and make sure no pressure exists in the air and hydraulic circuits.
 - ③ After stopping the product, do not remove until the temperature drops.
 - ④ Make sure there is no abnormality in the bolts and respective parts before restarting the machine or equipment.
- 3) Do not touch a clamp (cylinder) while it is working. Otherwise, your hands may be injured due to clinching.



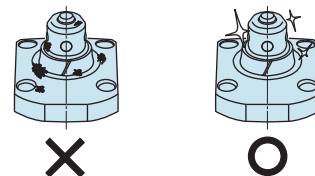
- 4) Do not disassemble or modify.
- If the equipment is taken apart or modified, the warranty will be voided even within the warranty period.

● Maintenance and Inspection

- 1) Removal of the Machine and Shut-off of Pressure Source
 - Before the machine is removed, make sure that safety devices and preventive devices are in place. Shut off the pressure and power source, and make sure no pressure exists in the air and hydraulic circuits.
 - Make sure there is no abnormality in the bolts and respective parts before restarting.
- 2) Regularly clean the area around the piston rod and plunger.
 - If it is used when the surface is contaminated with dirt, it may lead to packing seal damage, malfunctioning and fluid leakage.



- 3) Please clean out the reference surfaces on a regular basis (taper reference surface and seating surface) of the locating products. (VS/VT/VFL/VFM/VFJ/VFK/WVS/VWM/VWK/VX/VXE/VXF)
 - The locating products, except VX/VXE/VXF model, can remove contaminants with cleaning functions. However, hardened cutting chips, adhesive coolant and others may not be removed. Make sure there are no contaminants before installing a workpiece/pallet.
 - Continuous use with contaminant on components will lead to locating accuracy failure, malfunction and fluid leakage.



- 4) If disconnecting by couplers, air bleeding should be carried out on a regular basis to avoid air mixed in the circuit.
- 5) Regularly tighten nut, bolt, pin, cylinder, pipe line and others to ensure proper use.
- 6) Make sure the hydraulic fluid has not deteriorated.
- 7) Make sure there is a smooth action without an irregular noise.
 - Especially when it is restarted after left unused for a long period, make sure it can be operated correctly.
- 8) The products should be stored in the cool and dark place without direct sunshine or moisture.
- 9) Please contact us for overhaul and repair.

Cautions[Installation Notes
\(For Hydraulic Series\)](#)[Hydraulic Fluid List](#)[Notes on Hydraulic Cylinder
Speed Control Circuit](#)[Notes on Handling](#)[Maintenance/
Inspection](#)[Warranty](#)**Company Profile**[Company Profile](#)[Our Products](#)[History](#)**Index**[Search by
Alphabetical Order](#)**Sales Offices**

● Warranty

1) Warranty Period

- The product warranty period is 18 months from shipment from our factory or 12 months from initial use, whichever is earlier.

2) Warranty Scope

- If the product is damaged or malfunctions during the warranty period due to faulty design, materials or workmanship, we will replace or repair the defective part at our expense.

Defects or failures caused by the following are not covered.

- ① If the stipulated maintenance and inspection are not carried out.
- ② If the product is used while it is not suitable for use based on the operator's judgment, resulting in defect.
- ③ If it is used or operated in an inappropriate way by the operator.
(Including damage caused by the misconduct of the third party.)
- ④ If the defect is caused by reasons other than our responsibility.
- ⑤ If repair or modifications are carried out by anyone other than Kosmek, or without our approval and confirmation, it will void warranty.
- ⑥ Other caused by natural disasters or calamities not attributable to our company.
- ⑦ Parts or replacement expenses due to parts consumption and deterioration.
(Such as rubber, plastic, seal material and some electric components.)

Damages excluding from direct result of a product defect shall be excluded from the warranty.

Sales Offices

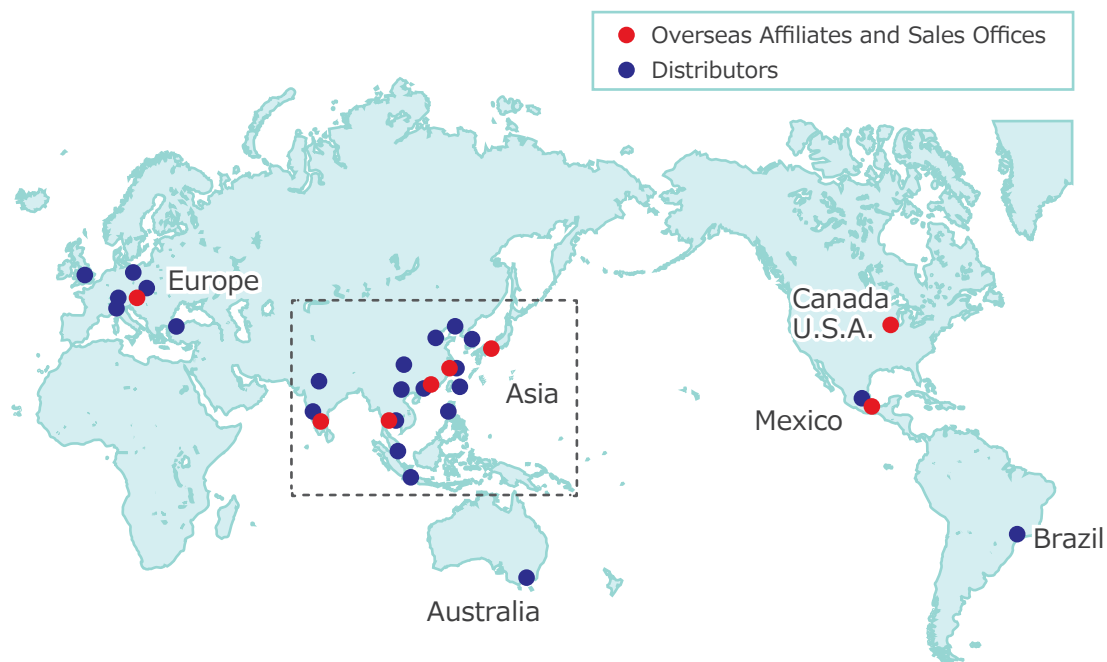
Sales Offices across the World

JAPAN HEAD OFFICE Overseas Sales	TEL. +81-78-991-5162 KOSMEK LTD. 1-5, 2-chome, Murotani, Nishi-ku, Kobe-city, Hyogo, Japan 651-2241 〒651-2241 兵庫県神戸市西区室谷2丁目1番5号	FAX. +81-78-991-8787
United States of America SUBSIDIARY KOSMEK (USA) LTD.	TEL. +1-630-620-7650 650 Springer Drive, Lombard, IL 60148 USA	FAX. +1-630-620-9015
MEXICO REPRESENTATIVE OFFICE KOSMEK USA Mexico Office	TEL. +52-442-161-2347 Av. Santa Fe #103 int 59 Col. Santa Fe Juriquilla C.P. 76230 Queretaro, Qro Mexico	
EUROPE SUBSIDIARY KOSMEK EUROPE GmbH	TEL. +43-463-287587 Schleppeplatz 2 9020 Klagenfurt am Wörthersee Austria	FAX. +43-463-287587-20
CHINA KOSMEK (CHINA) LTD. 考世美(上海)贸易有限公司	TEL. +86-21-54253000 Room601, RIVERSIDE PYRAMID No.55, Lane21, Pusan Rd, Pudong Shanghai 200125, China 中国上海市浦东新区浦三路21弄55号银亿滨江中心601室 200125	FAX. +86-21-54253709
INDIA BRANCH OFFICE KOSMEK LTD - INDIA	TEL. +91-9880561695 4A/Old No:649, Ground Floor, 4th D cross, MM Layout,Kavalbyrasandra, RT Nagar, Bangalore -560032 India	
THAILAND REPRESENTATIVE OFFICE KOSMEK Thailand Representation Office	TEL. +66-2-300-5132 67 Soi 58, RAMA 9 Rd., Suanluang, Suanluang, Bangkok 10250, Thailand	FAX. +66-2-300-5133
TAIWAN (Taiwan Exclusive Distributor) Full Life Trading Co., Ltd. 盈生貿易有限公司	TEL. +886-2-82261860 16F-4, No.2, Jian Ba Rd., Zhonghe District, New Taipei City Taiwan 23511 台湾新北市中和區建八路2號 16F-4 (遠東世紀廣場)	FAX. +886-2-82261890
PHILIPPINES (Philippines Exclusive Distributor) G.E.T. Inc, Phil.	TEL. +63-2-310-7286 Victoria Wave Special Economic Zone Mt. Apo Building, Brgy. 186, North Caloocan City, Metro Manila, Philippines 1427	FAX. +63-2-310-7286
INDONESIA (Indonesia Exclusive Distributor) PT. Yamata Machinery	TEL. +62-21-29628607 Delta Commercial Park I, Jl. Kenari Raya B-08, Desa Jayamukti, Kec. Cikarang Pusat Kab. Bekasi 17530 Indonesia	FAX. +62-21-29628608

Sales Offices in Japan

Head Office Osaka Sales Office Overseas Sales	TEL. 078-991-5162 〒651-2241 兵庫県神戸市西区室谷2丁目1番5号	FAX. 078-991-8787
Tokyo Sales Office	TEL. 048-652-8839 〒331-0815 埼玉県さいたま市北区大成町4丁目81番地	FAX. 048-652-8828
Nagoya Sales Office	TEL. 0566-74-8778 〒446-0076 愛知県安城市美園町2丁目10番地1	FAX. 0566-74-8808
Fukuoka Sales Office	TEL. 092-433-0424 〒812-0006 福岡県福岡市博多区上牟田1丁目8-10-101	FAX. 092-433-0426

Global Network



Asia Detailed Map



● FOR FURTHER INFORMATION ON UNLISTED SPECIFICATIONS AND SIZES, PLEASE CALL US.
 ● SPECIFICATIONS IN THIS CATALOG ARE SUBJECT TO CHANGE WITHOUT NOTICE.

